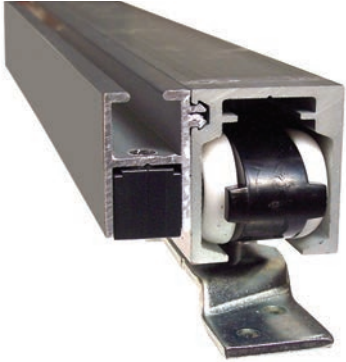


# ALU100 Soft Close System for Sliding Doors



Complies with ADA accessibility codes  
for max operating force of 5 lbs.

Reduces door speed during closing and opening.

Capacity 80 kg (176 lb) max.

Applications: Ideal for hotels, patient rooms, office and conference rooms, and bedrooms. For interior doors, room dividers, and pocket doors.

- Easily opens and closes sliding doors – low force is needed.
- Safety – helps prevent accidents such as fingers being slammed in closing door.
- Low noise – doors will not slam on closure.
- Low wear on door, frame and hardware – from low-force use.

Installation: Mounts to top of door frame.

Door material: Wood, metal, composites.

Function: Single doors.



## System component details

Dampening Unit:	Plastic casing containing shock absorber; mounts inside Side-mount Bracket.
Side-mount Bracket:	Aluminum 6063 T5, class I anodized, length 11.81 in; attaches to side of track.
Activator Bracket:	Metal; mounts to top of door, activates the Dampening Unit.
Track:	Aluminum, class I anodized, self-cleaning, in 2 lengths: 6 ft 4 in & 12 ft 8 in.
Carriage Kit:	2 carriages, 2 carrying brackets, 2 track stops, floor guide, nuts, bolts.



### No Flat Spots

The advanced plastic formula in FFI's PETP wheels is highly stable and won't develop flat spots; nylon wheels on other brands develop flat spots over time.

## Optional Accessories



SST floor guide



flush pulls

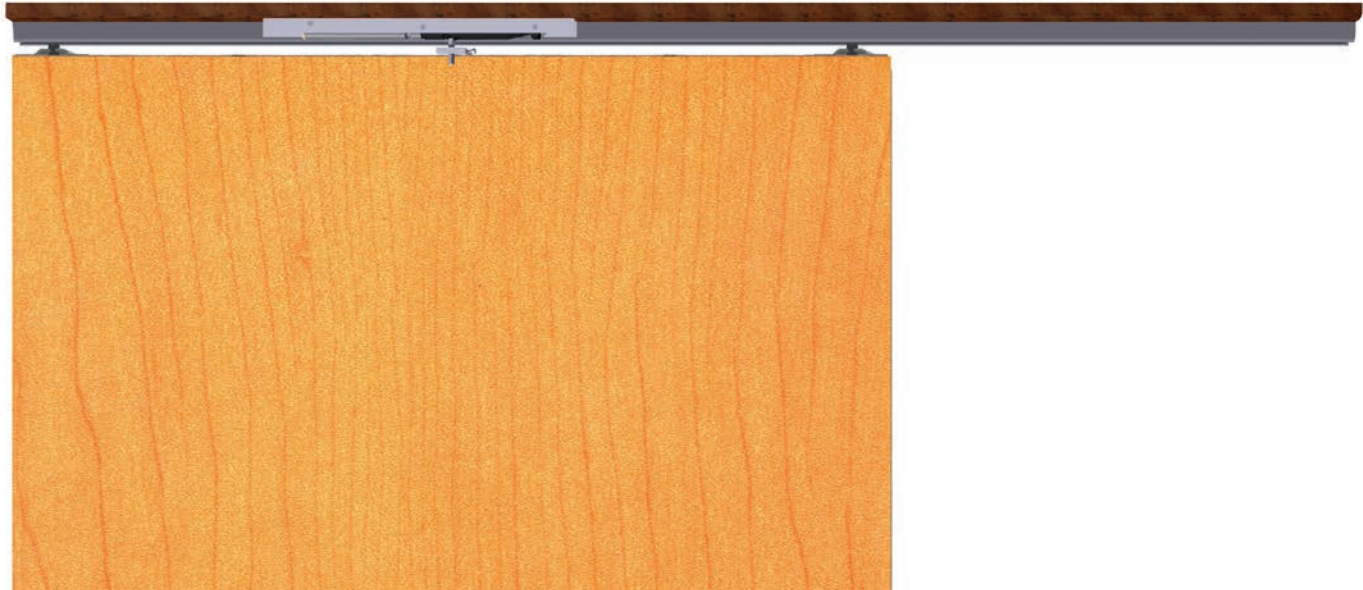


rotary pull



edge pull

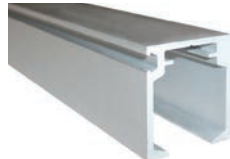
Contact FFI Customer Service for product details and ordering info: 800-677-0228 or [service@fenestration.net](mailto:service@fenestration.net)



dampening unit



side-mount bracket



track



activator bracket



carriage kit

### ALU100 Soft Close System Part Numbers

Description	Part Numbers
Dampening Unit, 1 or 2 per track	0205380
Sidestop Activator Bracket	205380/2/4
ALU100x Sidestop Carriage Kit	ALU100D JW
Side-mount Bracket, 1 or 2 per track	ALU100S.12.628
ALU100 Track, 6 ft. 4 in.	ALU100.76.628
ALU100 Track, 12 ft. 8 in.	ALU100.152.628

Contact FFI Customer Service for product details and ordering info: 800-677-0228 or [service@fenestration.net](mailto:service@fenestration.net)