

Benefits

- Ideal for smart buildings; integrate with building and home automation systems.
- CDs is certified for Smoke & Heat Extraction (SHE).

Applications

Low profile operation of awning windows, casement windows, hopper windows, curtain wall vents, and skylights.



CDs Actuator Features

- CDs actuators are medium duty operators, with compact casing and low noise operation.
- Push force: Up to 300N (67 lbf)
- Pull force: 300N (67 lbf)
- Actuator has stainless steel chain for rigidity and durability; Chain is off-center in casing.
- Can be concealed in frame or curtain wall
- Integrated cycle counter automatically keeps count of open-closed cycles during life of actuator
- 3.1 meter connection cable can be connected on either side (sold separately)
- Tested to 10,000 cycles

Pre-Programmed EasyDrive Features

Using one communication line, EasyDrive can program up to 8 single actuators on separate vents or synchronize multiple actuators on one vent.

Programming must be specified at order

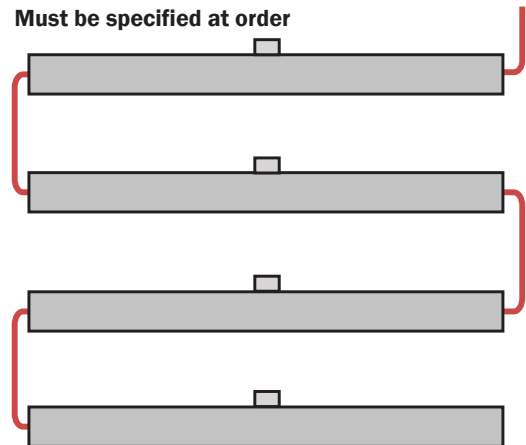
- Chain stroke** From 21mm up to 600mm (varies by model).
- Speed adjustment** Programmable from 10mm/sec down to 4mm/sec for quiet operation.
- Speed reduction** For the last seconds of closing, as a safety precaution.
- Seal relief adjustment** Between 0-20mm to protect sash at closed position.
- Feedback Signal** OPEN or CLOSE can be selected

CDs EasyDrive

Part #	Color	Stroke	Force (Push/Pull)
13337020204	Silver Grey	Up to 200mm	300N/300N
13337020404	Silver Grey	Up to 400mm	300N/300N
13337020604	Silver Grey	Up to 600mm	300N/300N

Tandem Capability

Must be specified at order



Specifications

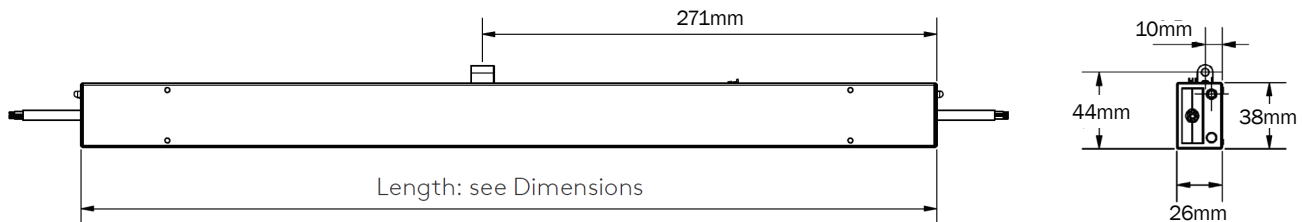
Supply voltage	24VDC (-15% / +50%)
Nom. Current draw	Approx 0.9A at 300N load
Limit stop	(Open): Built in limit switch (Closed) Integrated electronic power cut-off
Chain stroke (approx)	21 to 200mm ($1\frac{3}{16}$ " to $7\frac{7}{8}$ "), adjustable 21 to 400mm ($1\frac{3}{16}$ " to $15\frac{3}{4}$ "), adjustable 21 to 600mm ($1\frac{3}{16}$ " to $23\frac{5}{8}$ "), adjustable
Chain adjustment	Automatic adjustment
Push force (Max)	Up to 300N (67 lbf +/- 3%), adjustable
Pull force (Max)	300N (67 lbf +/- 3%), adjustable
Clamping force (Max)	3000N (899 lbf +/- 3%) force needed to rip chain out of actuator case
Chain speed	4-15mm/sec
Dimensions	200mm stroke = 510 x 26 x 38mm (20" x 1" x 1½") 400mm stroke = 610 x 26 x 38mm (24" x 1" x 1½") 600mm stroke = 710 x 26 x 38mm (28" x 1" x 1½")
Power cable	3.1 meter cable sold separately
Run/Rest cycle	For every 60 sec running (on), must then rest (off) for 120 sec
Ambient Oper Temp	-10°C to +60°C (14°F to 140°F)
Listing	UR Recognized
Protection class	IP20
Case	Aluminum
Opening mechanism	Stainless steel chain, chain is off-centered in case



Interconnectors that fit flush into the actuator body. Can be plugged into either side of the actuator.



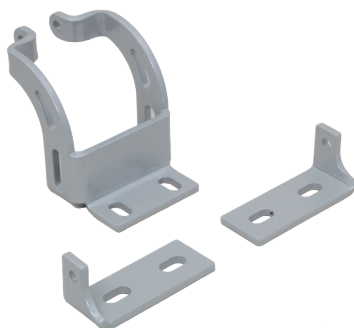
13332570315 Connection cable



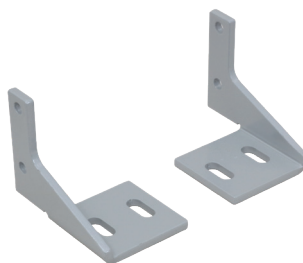
Discuss with AFI Sales & Support for your specific project/profile.

Mounting Bracket Options

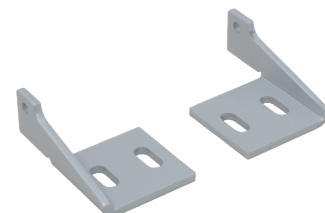
Must be specified at order



13342504181



13342504191



13342504196