

## Benefits

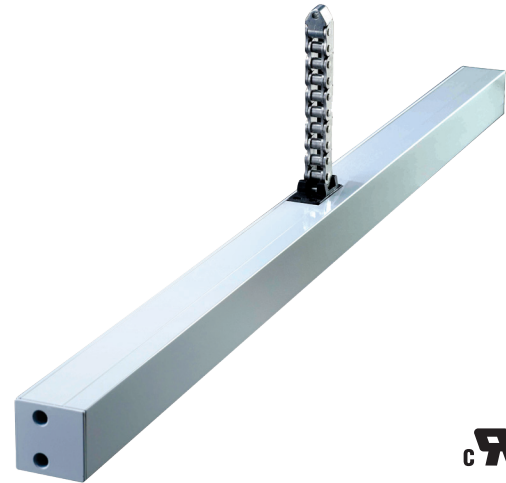
- Ideal for smart buildings; integrate with building and home automation systems.
- EM2 is certified for Smoke & Heat Extraction (SHE).

## Applications

Automated operation of awning windows, hopper windows, casement windows, curtain wall vents, and skylights.

## EM2 Actuator Features

- EM2 actuators are medium duty operators, with compact casing and low noise operation.
- Push force: Up to 300N (67 lbf)
- Pull force: 300N (67 lbf)
- Actuator has stainless steel chain for rigidity and durability; Chain is centered in casing.
- Can be concealed in frame or curtain wall
- Actuators available in Grey, White or other RAL colors
- Prewired with 3.1 meter cable
- Tested to 10,000 cycles



## EM2

Part #	Color	Stroke	Force (Push/Pull)
<b>13322461023</b>	Silver Grey	Up to 327mm	300N/300N
<b>13322461063W</b>	White	Up to 327mm	300N/300N
<b>13322461063</b>	Black or other	Up to 327mm	300N/300N
<b>13322461443</b>	Silver Grey	Up to 419mm	300N/300N
<b>13322461463W</b>	White	Up to 419mm	300N/300N
<b>13322461463</b>	Black or other	Up to 419mm	300N/300N
<b>13322461853</b>	Silver Grey	Up to 511mm	300N/300N
<b>13322461823W</b>	White	Up to 511mm	300N/300N
<b>13322461823</b>	Black or other	Up to 511mm	300N/300N
<b>13322462273</b>	Silver Grey	Up to 603mm	300N/300N
<b>13322462203W</b>	White	Up to 603mm	300N/300N
<b>13322462203</b>	Black or other	Up to 603mm	300N/300N
<b>13322460033</b>	Silver Grey	Up to 810mm	100N/300N
<b>13322460003W</b>	White	Up to 810mm	100N/300N
<b>13322460003</b>	Black or other	Up to 810mm	100N/300N

## Specifications

<b>Supply voltage</b>	24VDC (-15% / +50%)
<b>Nom. Current draw</b>	Approx 1.0A at 300N load
<b>Limit stop</b>	(Open): Built in limit switch (Closed) Integrated electronic power cut-off
<b>Chain stroke (approx)</b>	327mm (12 <sup>7</sup> / <sub>8</sub> "    603mm (23 <sup>3</sup> / <sub>4</sub> ") 419mm (16 <sup>1</sup> / <sub>2</sub> "    810mm (31 <sup>7</sup> / <sub>8</sub> ") 511mm (20 <sup>1</sup> / <sub>8</sub> "
<b>Push force (Max)</b>	Up to 300N (67 lbf +/- 3%), adjustable
<b>Pull force (Max)</b>	300N (67 lbf +/- 3%), adjustable
<b>Clamping force (Max)</b>	3000N (675 lbf +/- 3%) force needed to rip chain out of actuator case
<b>Chain speed</b>	9mm/sec
<b>Dimensions</b>	327mm stroke = 544 x 40 x 40mm (21 <sup>7</sup> / <sub>16</sub> " x 1 <sup>5</sup> / <sub>8</sub> " x 1 <sup>5</sup> / <sub>8</sub> ") 419mm stroke = 636 x 40 x 40mm (25" x 1 <sup>5</sup> / <sub>8</sub> " x 1 <sup>5</sup> / <sub>8</sub> ") 511mm stroke = 820 x 40 x 40mm (32 <sup>5</sup> / <sub>16</sub> " x 1 <sup>5</sup> / <sub>8</sub> " x 1 <sup>5</sup> / <sub>8</sub> ") 603mm stroke = 820 x 40 x 40mm (32 <sup>5</sup> / <sub>16</sub> " x 1 <sup>5</sup> / <sub>8</sub> " x 1 <sup>5</sup> / <sub>8</sub> ") 810mm stroke = 1011 x 40 x 40mm (39 <sup>13</sup> / <sub>16</sub> " x 1 <sup>5</sup> / <sub>8</sub> " x 1 <sup>5</sup> / <sub>8</sub> ")
<b>Power cable</b>	3.1 meter cable included, black color
<b>Run/Rest cycle</b>	For every 60 sec running (on), must then rest (off) for 120 sec
<b>Ambient Oper Temp</b>	-10 °C to +60 °C (14 °F to 140 °F)
<b>Listing</b>	UR Recognized
<b>Protection class</b>	IP20
<b>Case</b>	Aluminum
<b>Colors</b>	Powder-coated: Silver Grey (RAL 9006), White (RAL 9016)
<b>Special colors</b>	Black (RAL 9005) and other RAL colors on request, see accessory data sheet.
<b>Opening mechanism</b>	Stainless steel chain, chain is centered in case

## Optional Accessories - Mounting Brackets

### See accessory data sheet for complete details

Part #	Description	Paint Color <sup>1</sup>
<b>2502516</b>		Grey RAL 9006
<b>13302502513</b>	For frame fitting with 15mm (5/8") projection.	Other RAL
<b>2502508</b>		White RAL 9016
<b>2502482</b>		Grey RAL 9006
<b>13302502483</b>	For flush mount to frame fitting.	Other RAL
<b>2502474</b>		White RAL 9016
<b>2502383</b>		Grey RAL 9006
<b>13302502368</b>	For casement mounting on bottom or side-hung windows.	Other RAL
<b>2502367</b>		White RAL 9016
<b>2600179</b>	Mounting with 10mm (3/8") projection on bottom or side-hung windows.	Grey RAL 9006
<b>13302600183</b>		Other RAL
<b>2600161</b>		White RAL 9016
<b>2502409</b>	Mounting with 15mm (5/8") projection on bottom or side-hung windows.	Grey RAL 9006
<b>13302502403</b>		Other RAL
<b>2502375</b>		White RAL 9016
<b>2502391</b>	For installation on top-hung windows and flat outward opening windows.	Grey RAL 9006
<b>13302502363</b>		Other RAL
<b>2502359</b>		White RAL 9016
<b>2502350</b>	For flush mounting on outward opening vertical pivot casements with small frame.	Grey RAL 9006
<b>13002502353</b>		Other RAL
<b>2502351</b>		White RAL 9016
<b>2600203</b>		Grey RAL 9006
<b>13302600203</b>	For frame fitting with 10mm (3/8") projection.	Other RAL
<b>2600195</b>		White RAL 9016

## Dimensions

327mm stroke	419mm stroke	511mm stroke	603mm stroke	810mm stroke
Length X = 544mm	Length X = 636mm	Length X = 820mm	Length X = 820mm	Length X = 1011mm
Length Y = 273mm	Length Y = 319mm	Length Y = 410mm	Length Y = 410mm	Length Y = 505mm

