

Benefits

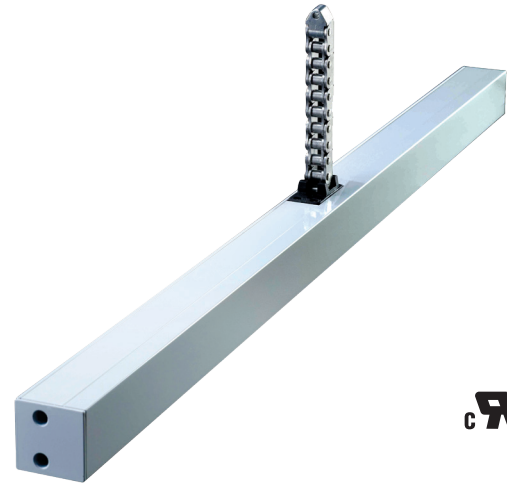
- Ideal for smart buildings; integrate with building and home automation systems.
- EM2 EasyDrive is certified for Smoke & Heat Extraction (SHE).

Applications

Automated operation of awning windows, hopper windows, casement windows, curtain wall vents, and skylights.

EM2 Actuator Features

- EM2 EasyDrive actuators are medium duty operators, with compact casing and low noise operation.
- Push force: Up to 300N (67 lbf)
- Pull force: 300N (67 lbf)
- Actuator has stainless steel chain for rigidity and durability; Chain is centered in casing.
- Can be concealed in frame or curtain wall
- Integrated cycle counter automatically keeps count of open-closed cycles during life of actuator
- Actuators available in Grey, White or other RAL colors
- Prewired with 3.1 meter cable
- Tested to 10,000 cycles



Pre-Programmed EasyDrive Features

Using one communication line, EasyDrive can program up to 8 single actuators on separate vents or synchronize multiple actuators on one vent.

Programming must be specified at order

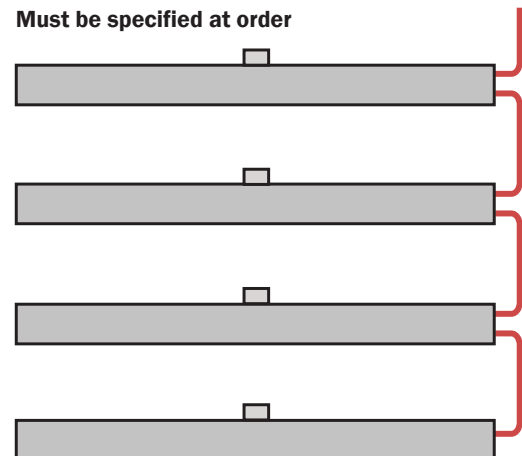
| | |
|-------------------------------|---|
| Chain stroke | From 21mm up to 810mm (varies by model). |
| Speed adjustment | Programmable from 10mm/sec down to 4mm/sec for quiet operation. |
| Speed reduction | For the last seconds of closing, as a safety precaution. |
| Seal relief adjustment | Between 0-20mm to protect sash at closed position. |
| Feedback Signal | OPEN or CLOSE can be selected |

EM2 EasyDrive

| Part # | Color | Stroke | Force (Push/Pull) |
|--------------------|----------------|-------------|-------------------|
| 13332024501 | Silver Grey | Up to 511mm | 300N/300N |
| 13332024502 | White | Up to 511mm | 300N/300N |
| 13332024503 | Black or other | Up to 511mm | 300N/300N |
| 13332024601 | Silver Grey | Up to 603mm | 300N/300N |
| 13332024602 | White | Up to 603mm | 300N/300N |
| 13332024603 | Black or other | Up to 603mm | 300N/300N |
| 13332024801 | Silver Grey | Up to 810mm | 100N/300N |
| 13332024802 | White | Up to 810mm | 100N/300N |
| 13332024803 | Black or other | Up to 810mm | 100N/300N |

Tandem Capability

Must be specified at order

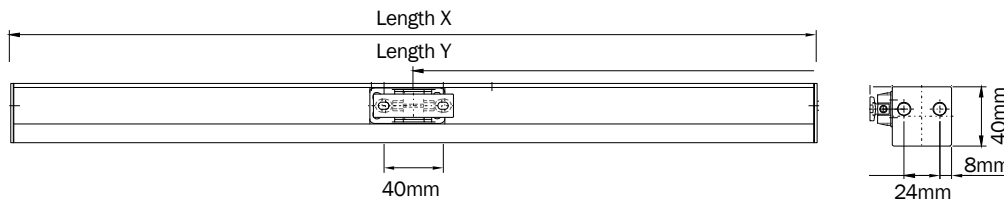


Specifications

| | |
|------------------------------|---|
| Supply voltage | 24VDC (-15% / +50%) |
| Nom. Current draw | Approx 1.0A at 300N load |
| Limit stop | (Open): Built in limit switch (Closed) Integrated electronic power cut-off |
| Chain stroke (approx) | 21 to 511mm ($13/16"$ to $20 1/8"$), adjustable 21 to 603mm ($13/16"$ to $23 3/4"$), adjustable 21 to 810mm ($13/16"$ to $31 7/8"$), adjustable |
| Chain adjustment | Automatic adjustment |
| Push force (Max) | Up to 300N (67 lbf +/- 3%), adjustable |
| Pull force (Max) | 300N (67 lbf +/- 3%), adjustable |
| Clamping force (Max) | 3000N (899 lbf +/- 3%) force needed to rip chain out of actuator case |
| Chain speed | 4-10mm/sec |
| Dimensions | 21-511mm stroke = 820 x 40 x 40mm ($32 5/16"$ x $1 5/8"$ x $1 5/8"$) 21-603mm stroke = 1011 x 40 x 40mm ($39 13/16"$ x $1 5/8"$ x $1 5/8"$) 21-810mm stroke = 1011 x 40 x 40mm ($39 13/16"$ x $1 5/8"$ x $1 5/8"$) |
| Power cable | 3.1 meter cable included, black color |
| Run/Rest cycle | For every 60 sec running (on), must then rest (off) for 120 sec |
| Ambient Oper Temp | -10 °C to +60 °C (14 °F to 140 °F) |
| Listing | UR Recognized |
| Protection class | IP20 |
| Case | Aluminum |
| Colors | Powder-coated: Silver Grey (RAL 9006), White (RAL 9016) |
| Special colors | Black (RAL 9005) and other RAL colors on request, see accessory data sheet. |
| Opening mechanism | Stainless steel chain, chain is centered in case |

Dimensions

| | | |
|---------------------|---------------------|---------------------|
| 511mm stroke | 603mm stroke | 810mm stroke |
| Length X = 820mm | Length X = 1011mm | Length X = 1011mm |
| Length Y = 410.5mm | Length Y = 505.5mm | Length Y = 444.5mm |



Optional Accessories - Mounting Brackets

See accessory data sheet for complete details

| Part # | Description | Paint Color ¹ |
|--------------------|--|--------------------------|
| 2502516 | | Grey RAL 9006 |
| 13302502513 | For frame fitting with 15mm ($5/8"$) projection. | Other RAL |
| 2502508 | | White RAL 9016 |
| 2502482 | | Grey RAL 9006 |
| 13302502483 | For flush mount to frame fitting. | Other RAL |
| 2502474 | | White RAL 9016 |
| 2502383 | | Grey RAL 9006 |
| 13302502368 | For casement mounting on bottom or side-hung windows. | Other RAL |
| 2502367 | | White RAL 9016 |
| 2600179 | Mounting with 10mm ($3/8"$) projection on bottom or side-hung windows. | Grey RAL 9006 |
| 13302600183 | | Other RAL |
| 2600161 | | White RAL 9016 |
| 2502409 | Mounting with 15mm ($5/8"$) projection on bottom or side-hung windows. | Grey RAL 9006 |
| 13302502403 | | Other RAL |
| 2502375 | | White RAL 9016 |
| 2502391 | For installation on top-hung windows and flat outward opening windows. | Grey RAL 9006 |
| 13302502363 | | Other RAL |
| 2502359 | | White RAL 9016 |
| 2502350 | For flush mounting on outward opening vertical pivot casements with small frame. | Grey RAL 9006 |
| 13002502353 | | Other RAL |
| 2502351 | | White RAL 9016 |
| 2600203 | | Grey RAL 9006 |
| 13302600203 | For frame fitting with 10mm ($3/8"$) projection. | Other RAL |
| 2600195 | | White RAL 9016 |