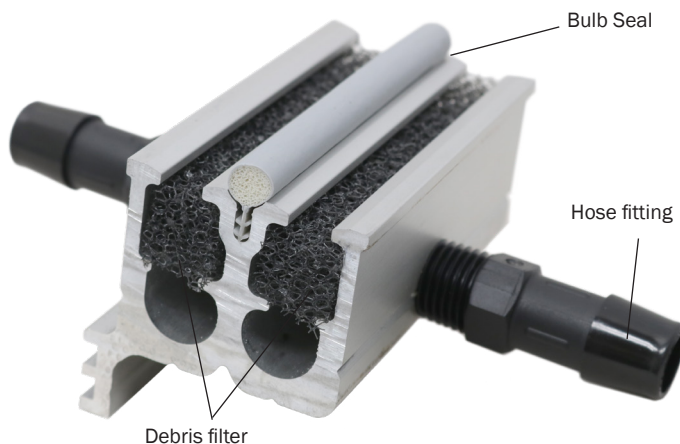


## Tools Needed

- (1) Adjustable wrench
- (1) Cutting Saw for Aluminum
- (1) Power Drill
- (1) Drill Bit  $\frac{7}{16}$ " steel 118 degree point
- (1) Tap -  $\frac{1}{4}$ -18 NPT
- Silicone sealant
- Teflon plumbers tape
- Scissors
- Vice grips
- Measuring tape/ruler



## Included Parts



Hose fittings (10-pack)



Gasket (12 seals)



36" Interlock Drain Extrusion



Bulb Seal (36" length)



Mounting screw (25-pack)



Debris filter (72" length)

## Tubing, connectors and replacement parts sold separately



Part # SL407.DR.050  
 $\frac{1}{2}$ "ID Clear Tubing (50ft roll)



Part # SL406.FT.13  
Elbow fitting (10-pack)



Part # SL406.FT.14  
Tee fitting (10-pack)



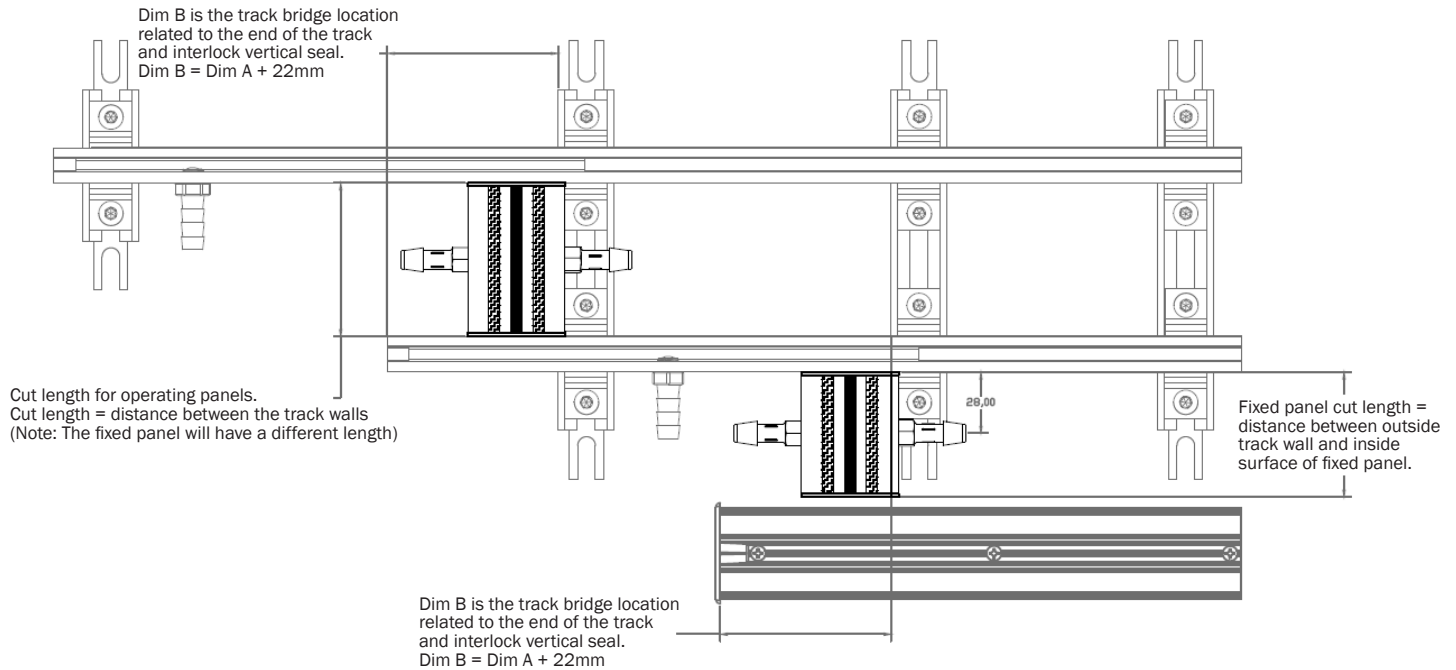
Part # SL405.36.SEAL  
Bulb Seal (36" length)



Part # SL405.02.FOAM  
Debris filter (72" length)

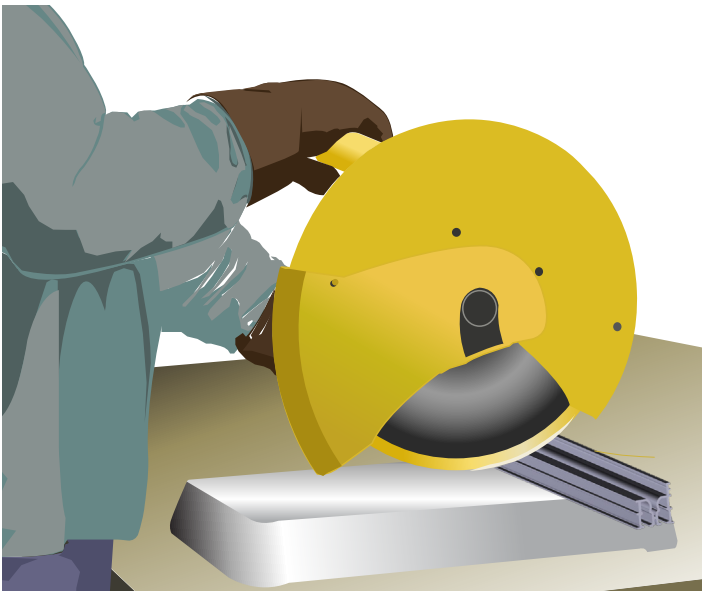
## Plan Your Assembly

FFI does not advise on materials, dimensions, or specifications of floor or subfloor.



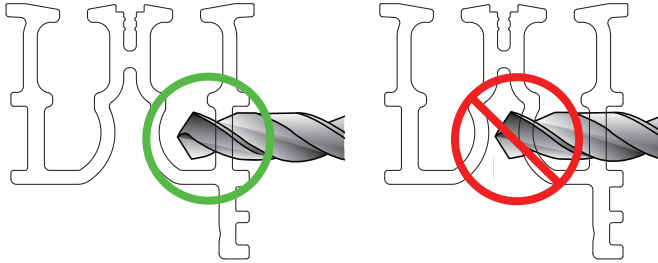
## Assembly Steps

1. Unpack and identify all kit items are accounted for.
2. Measure the distance between the track runs, see image above.
3. Cut the length of the extrusion to the desired length less 1.5mm (1/16") to account for gasketing.
4. Plan fittings according to application; Interior only, exterior only or both. Drill holes through the outer walls only.

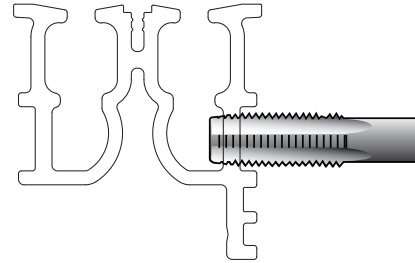


## Assembly Steps

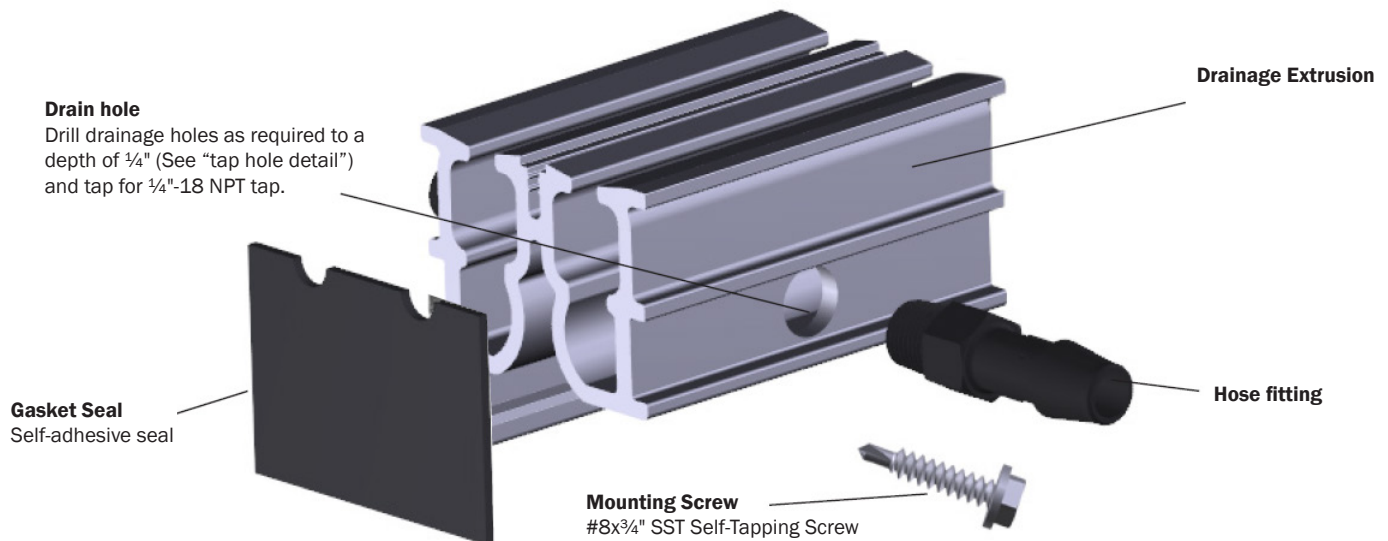
5. Drill pilot hole with 1/4" Dia bit. Drill tap hole with 7/16" Dia bit. **Note:** Drainage port can be on either interior, exterior or bottom.



6. Thread drainage port with a 1/4"-18 NPT tap.

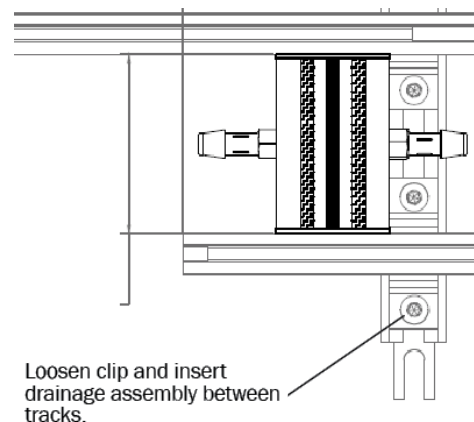


7. Hand tighten hose fitting onto threaded interlock drain. With adjustable wrench, apply (1) half turn to ensure proper seal.



8. Attach gasket seals, one per side.

9. Slide Interlock Drainage assembly into place in between track for a snug fit, screw the lower base of the Interlock Drainage Kit to the FASTrack bridge.



# Interlock Drainage Kit

- 10.** Once drainage system is installed on jobsite, attach drainage system tubing. Attach drainage hose to valve fittings and run drainage hose line away from FASTrack to your pre-planned drainage area.

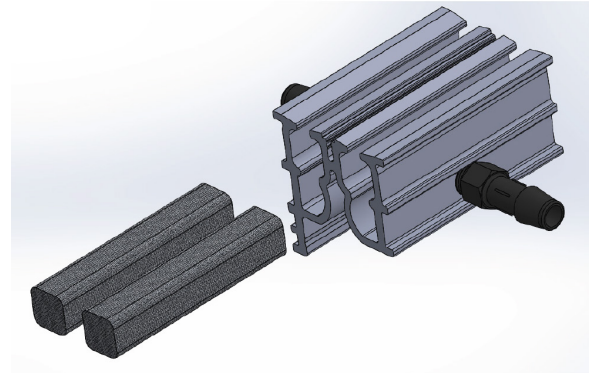


Part # SL406.FT.13  
Elbow fitting (10-pack)



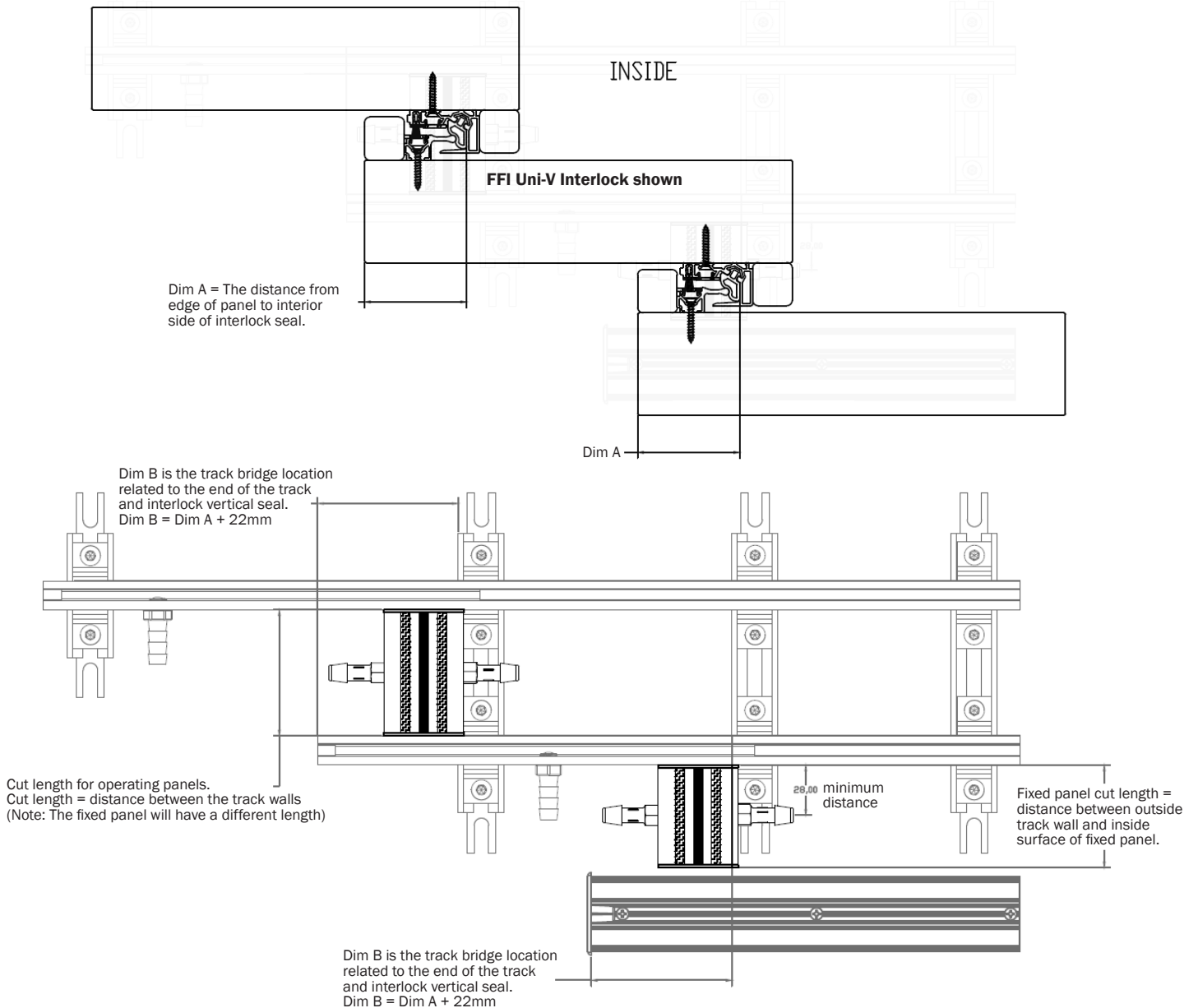
Part # SL406.FT.14  
Tee fitting (10-pack)

- 11.** Cut debris filter to desired length and insert into drainage channel.

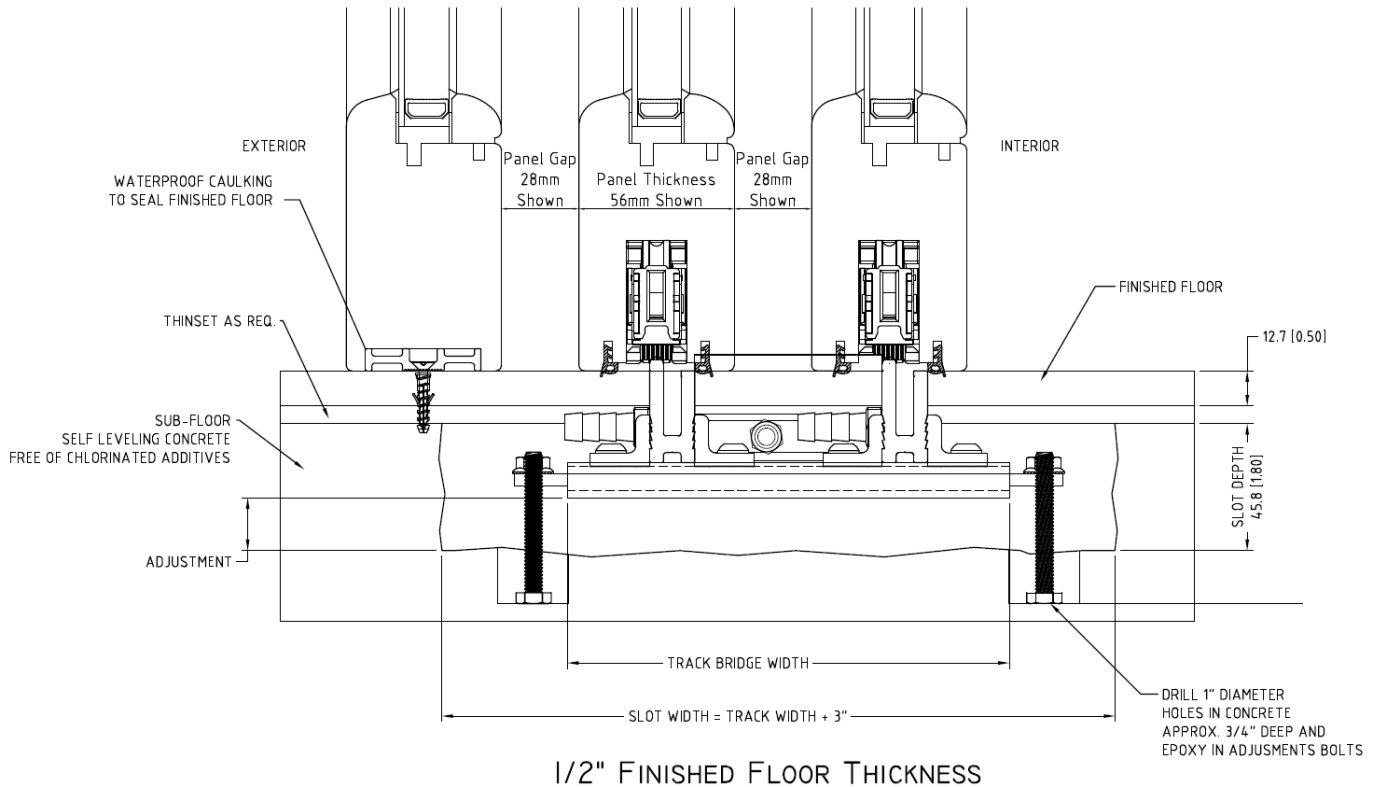


## Example

Typical drainage tubing assembly for single-sided panel.



## System drainage example



### **FFI Warranty for Interlock Drainage Kit:**

Components are warranted for one (1) year from date of original purchase against defects in materials and manufacturing, under normal installation and use. Warranty doesn't cover corrosion from direct exposure to harsh chemicals such as chlorine or chlorides, nor improper settling of floor. Any return or claim must be made according to FFI Terms and Conditions.

