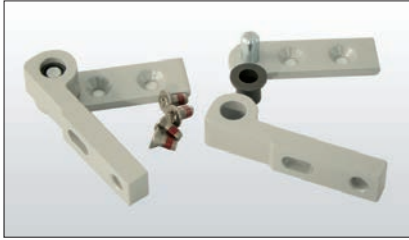


LM Optional Accessories

for actuators including:
LM2, LM2 Tandem, and LM EasyDrive



Swivel brackets SBLM

For LM, LM/2 (Tandem) and LM EasyDrive.

For movable installation of chain motor on bottom-hung, top-hung and flat windows.

Mounting on the casement, if the casement height is less than the stated minimum dimension.

Consists of two turn-tilt plates and two bearing angles incl. bearing sleeves.

Please order accessories for tandem configuration in pairs!

	Item-No.
SBLM/S	2600443
SBLM/W	2600435



Frame angle SBLM-R0 bracket

For LM, LM/2 (Tandem) and LM EasyDrive.

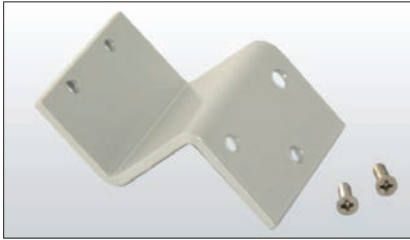
For frame mounting with flush windows.

To fix the hinge bracket.

Please order accessories for tandem configuration in pairs!

	Item-No.
SBLM-R0/S	2600351
SBLM-R0/W	2600344

LM Optional Accessories



Frame angle SBLM-R10 bracket

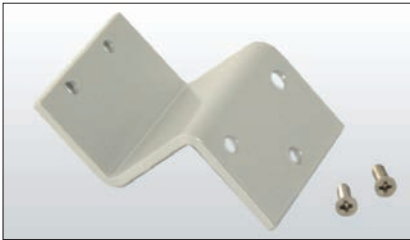
For LM, LM/2 (Tandem) and LM EasyDrive.

For frame fitting with 10 mm projection.

To fix the hinge bracket.

Please order accessories for tandem configuration in pairs!

	Item-No.
SBLM-R10/S	2600385
SBLM-R10/W	2600377



Frame angle SBLM-R15 bracket

For LM, LM/2 (Tandem) and LM EasyDrive.

For frame fitting with 15 mm projection.

To fix the hinge bracket.

Please order accessories for tandem configuration in pairs!

	Item-No.
SBLM-R15/S	2600419
SBLM-R15/W	2600401

LM Optional Accessories



Cover profile

Aluminium profile with black end caps for concealed horizontal installation of the drive on the window casement.

Can only be installed in window casements with at least 10 mm projection and only suitable for fixed installation of LM chain drives (without swivel brackets).

Cover profile LM 350 suitable for opening widths up to 350 mm,

Cover profile LM 500 for 400 and 500 mm opening widths.

With attachment brackets and bolts.

Note: Other lengths available on request.

	Item-No.
Cover profile LM 350	2601003
Cover profile LM 500	2601006

Custom Colors

In addition to standard colors, other powder-coated paint colors are possible.

Specify color using RAL color system (www.RALcolor.com).

Expect extra lead time; no minimum quantity required.

In addition to actuator cost, the following special fees apply:

27000497-RAL	Custom RAL color setup fee	\$250 per color/project
2600000-RAL-ACTU	Custom RAL paint	\$25 per actuator
2600001-RAL-BRAC	Custom RAL paint	\$10 per bracket