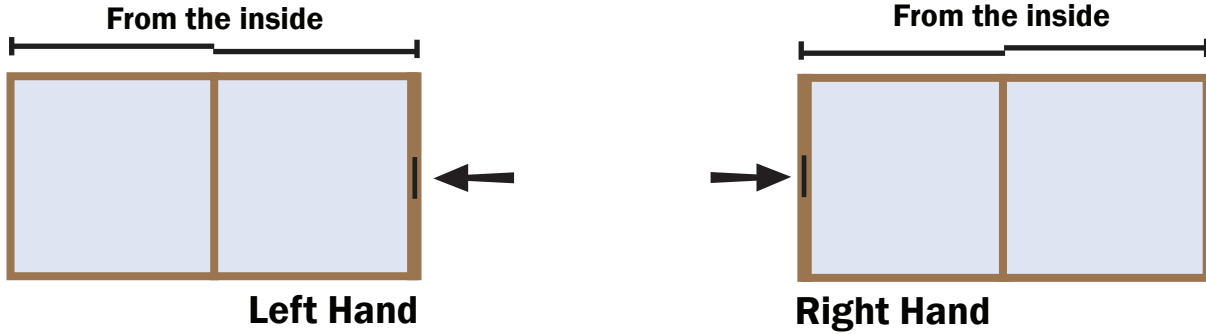


Opening the Lift Slide Door (Right Handed Operation)

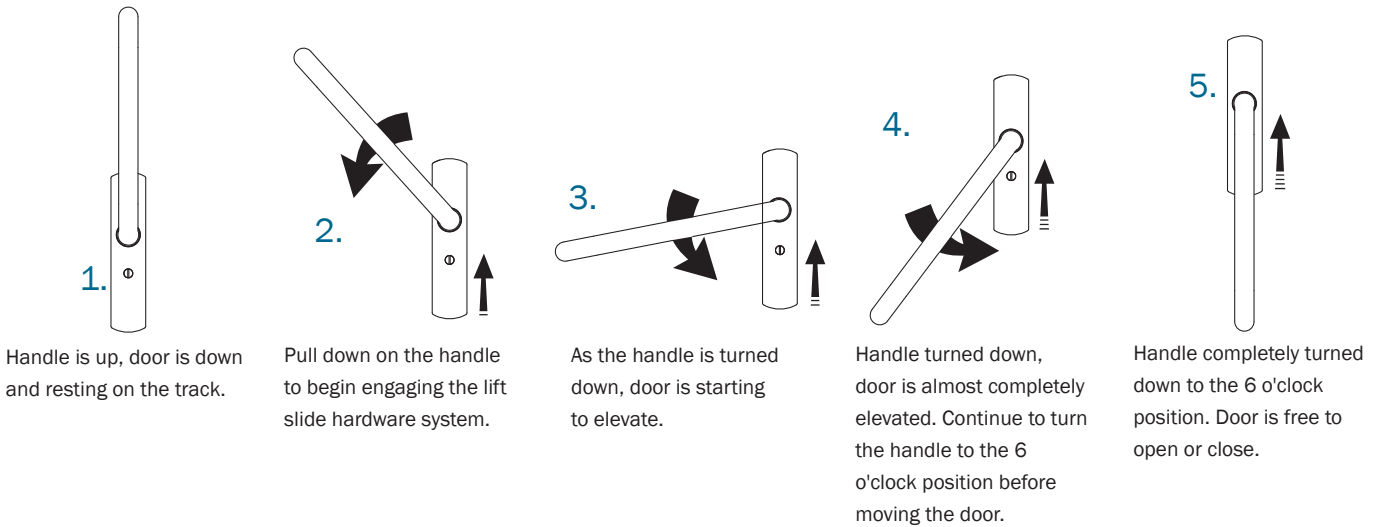
1. Handle is up, door is down and resting on the track.
2. Pull down on the handle to begin engaging the lift slide hardware system.
3. As the handle is turned down, door is starting to elevate.
4. Handle turned down, door is almost completely elevated. Continue to turn the handle to the 6 o'clock position before moving the door.
5. Handle completely turned down to the 6 o'clock position. Door is free to open or close.

Closing the Lift Slide Door (Right Handed Operation)

1. Handle is down, door is free to move.
2. Pull up on the handle to engage the lift slide hardware system.
3. As the handle is turned up, door is starting to lower to rest on the track.
4. Handle turned up, door is almost completely resting on the track. Continue to turn the handle to the 12 o'clock position.
5. Handle completely turned up to the 12 o'clock position. The door is now fully resting on the track.



Opening the Lift Slide Door (Left Handed Operation)



Closing the Lift Slide Door (Left Handed Operation)

