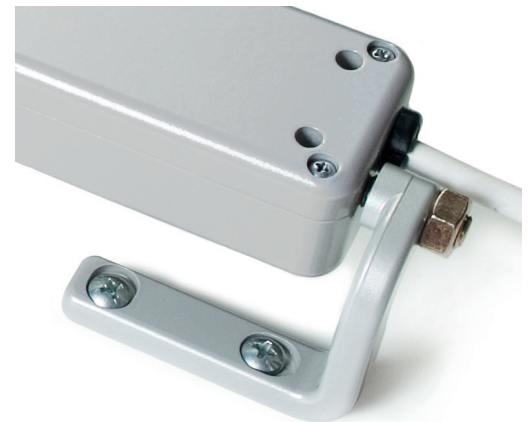


## Features

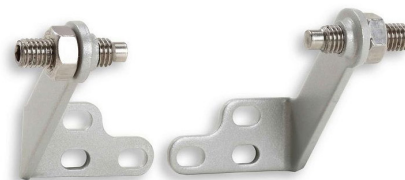
- Quasar actuators are for awning windows, casement windows, hoppers, curtain wall vents and skylights.
- Quasar-L is a version of the Quasar with longer chain options in a longer case.
- Multiple vents can be wired in parallel, and can be operated by building automation systems.
- Available as 24" (380mm) or 30" (500mm) chain operator; self-adjusting for proper closure at installation.
- 30" and 40" strokes are only suitable for hopper windows or side-hinged windows that open inward.
- One 24"/600mm chain operator opens a 48" tall/264 lb. or an 82" tall/451 lb. window or vent.
- One 30"/750mm chain operator opens a 48" tall/134 lb. or an 82" tall/229 lb. window or vent.
- One 40"/1000mm chain operator opens a 48" tall/54 lb. or an 82" tall/92 lb. window or vent.
- Operator has stainless steel, double-link chain for rigidity and durability.
- Low-profile, attractive aluminum case; available in Black, White or Grey paint.
- Minimum sash height is 24" (for 24" chain) or 30" (for 30" chain) and 40" (for 40" chain).
- Two-year UCS manufacturer's warranty. Requires reading AFI Install Guide before purchase, and confirmation of project and installation specs by licensed electrical contractor.



Mounting brackets available separately

## Quasar-L AC

Part #	Chain	Color	Stroke
<b>41052C</b>	24" Chain	Grey	Up to 600mm
<b>41053E</b>		Black	Up to 600mm
<b>41054G</b>		White	Up to 600mm
<b>41055J</b>	30" Chain	Grey	Up to 750mm
<b>41056L</b>		Black	Up to 750mm
<b>41057N</b>		White	Up to 750mm
<b>41058R</b>	40" Chain	Grey	Up to 1000mm
<b>41059T</b>		Black	Up to 1000mm
<b>41060B</b>		White	Up to 1000mm



Mounting brackets ordered separately  
Long Slim model, fits most profiles.

## Mounting Brackets (Ordered separately)

Part #	Style	Color
<b>41898F</b>	Long Slim	Grey
<b>41899G</b>		Black
<b>41900H</b>		White
<b>41901I</b>	Short Slim	Grey
<b>41902J</b>		Black
<b>41903K</b>		White
<b>40843F</b>	Die-cast	Grey
<b>40844G</b>		Black
<b>40845H</b>		White

## Specifications

<b>Supply voltage</b>	100V AC - 240V AC, 60Hz Line Voltage
<b>Nom. Current draw</b>	0.48-0.2A
<b>Limit stop</b>	(Open): Built in limit switch (Closed) Integrated electronic power cut-off
<b>Chain stroke (approx)</b>	600mm (24"), 750mm (30") or 1000mm (40")
<b>Push force (Max)</b>	24" chain has 66 lbs, 30" chain has 33 lbs, 40" chain has 22 lbs
<b>Pull force (Max)</b>	24" chain has 66 lbs, 30" chain has 66 lbs, 40" chain has 66 lbs
<b>Chain speed</b>	15mm/sec
<b>Dimensions</b>	Height: 37mm (1 <sup>7</sup> / <sub>16</sub> " Depth: 69mm (2 <sup>11</sup> / <sub>16</sub> " Length (24" stroke model): 876mm (34 <sup>1</sup> / <sub>2</sub> " Length (30" stroke model): 951mm (37 <sup>7</sup> / <sub>16</sub> " Length (40" stroke model): 1076mm (42 <sup>3</sup> / <sub>8</sub> "
<b>Power cable</b>	UL cable 1.5 meter included, white color
<b>Run/Rest cycle</b>	For every 60 sec running (on), must then rest (off) for 120 sec
<b>Ambient Oper Temp</b>	-10 °C to +60 °C (14 °F to 140 °F)
<b>Listing</b>	UL Listed
<b>Protection class</b>	IP20
<b>Colors</b>	Powder-coated: Grey (RAL 9006), White (RAL 9010), or Black (RAL 9005)
<b>Opening mechanism</b>	Stainless steel chain, chain is centered in case