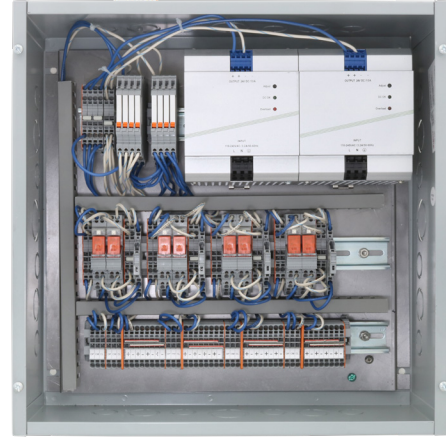




Features

- Powered control panels for 24VDC actuators
- DIN rail mounted 120VAC/24VDC power supply
- Quick connect input terminals
- One-touch open/close control using switch #SW-5686 switch (See accessories)
- Master and Sub group control via SPDT switches or relays



RS-4 Model shown

Each channel accepts up to 4A. Refer to actuator amp ratings below for required operation.

0-0.9A	
LM2	0.7A ea
Vega DC	0.7A ea
EM	0.8A ea
Quasar DC	0.8A ea
Quasar L DC	0.9A ea
CDi	0.9A ea

1-1.5A	
LM2 Tandem	2 x 0.5A
Ulysses	1.0A ea
FM (300N)	1.2A ea
Twin Vega Synchro	1.4A ea

1.5-1.9A	
EM Tandem	2 x 0.8A
FM (500N)	1.6A ea
FM (600N)	1.8A ea
Synchro Vega	1.8A/pair
Quasar L Synchro	1.8A/pair
Quasar Synchro	1.8A/pair
Quasar Twin Synchro	1.8A ea

2-2.9A	
FM (700N)	2.0A ea
FM (300N) Tandem	2 x 1.2A

RS Series

Part #	Description	Groups	Outputs	Use	Dimensions
RS-2	2 x 96W Control Panel	2	2	2 - 8 Actuators	16.00" x 16.00" x 6.00"
RS-4	4 x 96W Control Panel	4	4	4 - 16 Actuators	16.00" x 16.00" x 6.00"

