

Benefits

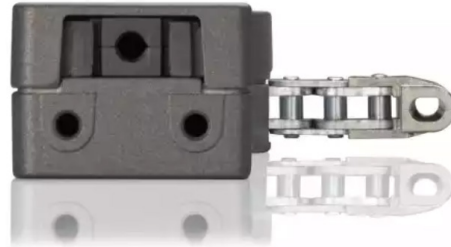
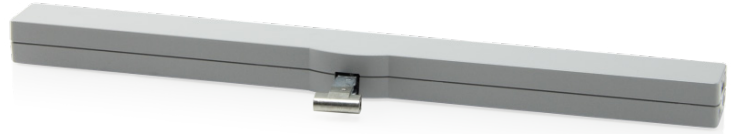
- Ideal for smart buildings; integrate with building and home automation systems.

Applications

Automated operation of awning windows, hopper windows, casement windows, curtain wall vents, and skylights.

VCD-0204-1-ACB Actuator Features

- Push/Pull force: 200N (45 lbf)
- 2.5m connection cable with interconnect plug
- TMS+ tandem safety function for operating 2 drives on one sash
- 9.84" (250mm) or 13.78" (350mm) chain operator; Option of chain stroke programmings via magnet
- Programmable drive functions and different drive parameters
- Active closing edge protection (time controlled reversing when an obstacle is detected)
- 5-year manufacturer's warranty. Requires reading AFI Install Guide before purchase, and confirmation of project and installation specs by licensed electrical contractor



Programmable Features

Option of chain stroke programmings via magnet.

- | | |
|-------------------------------|--|
| Chain stroke | Up to 350mm (varies by model). |
| Speed reduction | For the last seconds of closing, as a safety precaution. |
| Seal relief adjustment | Between 0-20mm to protect sash at closed position. |

VCD 204-1-ACB

Part #	Color	Stroke (and force)
25.155.15	Silver	250mm (200N)
25.155.25	Silver	350mm (200N)
25.155.35		Custom Build

Specifications

Supply Voltage	24VDC (-15% / +50%)
Nom. Current Draw	Approx 0.35A at 200N load
Limit stop	(Open): Built in limit switch (Closed) Integrated electronic power cut-off
Chain stroke (approx)	250mm (9.84") to 350mm (13.78")
Push force (Max)	200N (45 lbf +/- 3%)
Pull force (Max)	200N (45 lbf +/- 3%)
Chain speed	6mm/sec
Dimensions	480mm L x 41.6mm D x 30mm H (18 ⁷ / ₈ " x 1 ⁵ / ₈ " x 1 ¹ / ₈ ")
Run/Rest cycle	For every 60 sec running (on), must then rest (off) for 120 sec
Ambient Oper Temp	-10 °C to +60 °C (14 °F to 140 °F)
Listing	UL Recognized
Protection class	IP30
Colors	Powder-coated: Silver

