

This form allows for one style in four sizes.

Customer Information: Please enter your company name, contact, phone #, fax #, date, and email address.

Quantities: List the quantities needed by size, and circle whether they are right- or left-handed.

Scheme: Circle one letter scheme (refer to rectangular locking schemes on page 3).

Sash type: Circle the sash type (if more than one type is used please use a separate form).

Style: Circle the style used (if more than one style, please use a separate form).

Sash movement: Circle the sash movement used (if more than one, please use a separate form).

Material: Circle the material used (if more than one material, please use a separate form).

Backset: Circle handle backset needed (if more than one backset, please use a separate form).

Air gap: Circle the air gap used (if more than one air gap, please use a separate form).

Sash thickness: Write in the thickness of the sash.

Finish: Circle the finish needed.

Sash (rebate) height:

Write in the sash (rebate) height in inches or millimeters, referring to detail 1 or 2.

Sash (rebate) width:

Write in the sash (rebate) width in inches or millimeters, referring to detail 1 or 2.

Handle height:

Write in the sash handle height in inches or millimeters.

Hinges:

If you know what type of hinge you will use, please describe (optional).

Drainage channel:

All non-cladded in-swing multipoint window systems require drainage channel along the sill. If you know what channel you need, circle yes and write the part number. If you would like to know what types are available, circle send info.

Gasket type:

All multipoint window systems require gasketing. If you know what gasket you use, circle yes and write in part number. If you would like to know what types are available, circle send info.

Handle:

Please describe the window handle you plan to use, or ask FFI to recommend one; it must have 7mm square spindle.

Jigs:

A complete set of jigs is available to make hinge and keep installation easier. Circle if yes if needed. If you would like to know what jigs are available circle 'send info' (optional).

Insert Tooling:

Insert tooling is used to cut the "Eurogroove and 3-step" frame and sash profiles. If you would like to know what tooling is available from FFI circle 'yes' and 'send info' (optional).

Cladding:

Extruded aluminum and brass cladding is available for most applications. If you would like to know what cladding is available circle 'yes' and 'send info' (optional).

Attachments: You may attach any other information.

A quote can now be figured and sent to you.

Company: _____ Phone: _____
 Contact: _____ Date: _____ Fax: _____
 Functional Fenestration salesperson: _____ Email: _____

Quantity: _____ (Circle)
 Size 1 _____ RH LH
 Size 2 _____ RH LH
 Size 3 _____ RH LH
 Size 4 _____ RH LH

Scheme: A B
 Circle one C D
 (from E F
 schemes on G H
 page 3)

Sash type: Flush Rebated **Style:** casement awning

Sash movement: inswing outswing **Material:** wood pvc

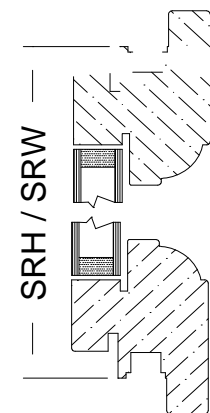
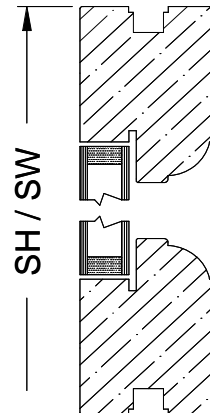
Backset: 15mm 25mm 40mm **Air Gap:** 4mm 12mm
 (mortise keep) (surface keep)

Sash thickness: _____ **Finish:** Silver Yellow
 (stock) (close-out)

Sash (rebate) Height : _____
 (see Details 1 & 2) Size 1 Size 2 Size 3 Size 4

Sash (rebate) Width: _____
 (see Details 1 & 2) Size 1 Size 2 Size 3 Size 4

Handle Height: _____
 (from rebate) Size 1 Size 2 Size 3 Size 4



Hinges: yes no send hinge info **part #:** _____

Drainage channel: yes no send D-channel info **part #:** _____

Gasketing: yes no send gasketing info **part #:** _____

Handle: yes no send handle info **part #:** _____

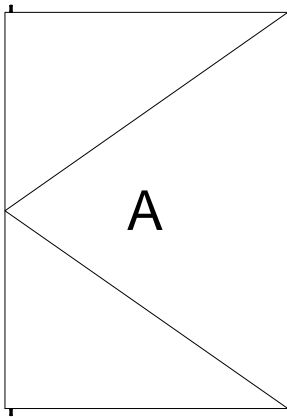
Please attach any additional comments and drawings.

OPTIONAL ITEMS:

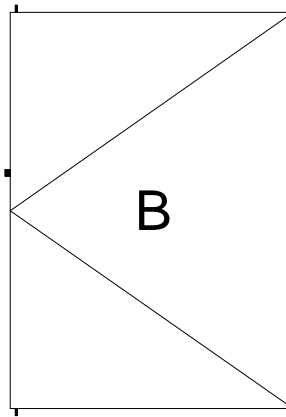
Jigs: yes no send jigs info

Insert Tooling: yes no send tooling info

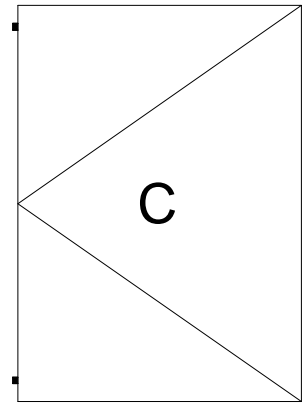
Cladding: yes no brass aluminum send info



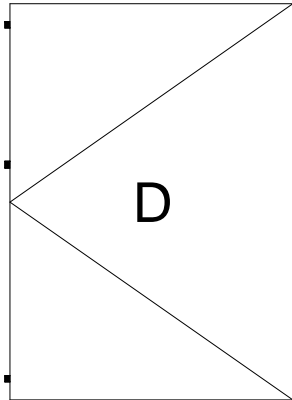
A
2 point
w/ shootbolts



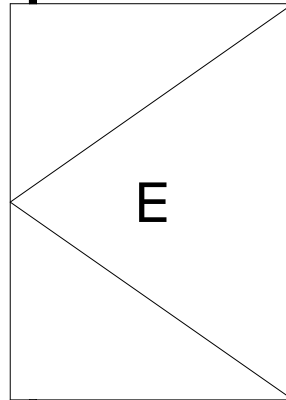
B
3 point
w/ cam & shootbolts



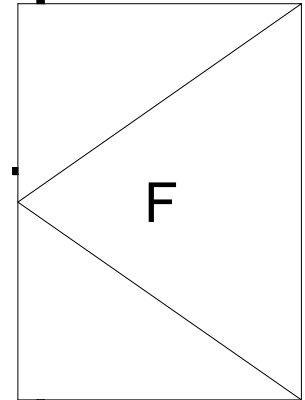
C
2 point
w/ cams



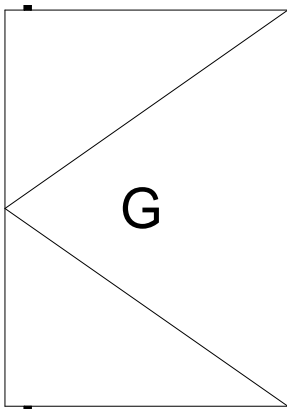
D
3 point
w/ cams



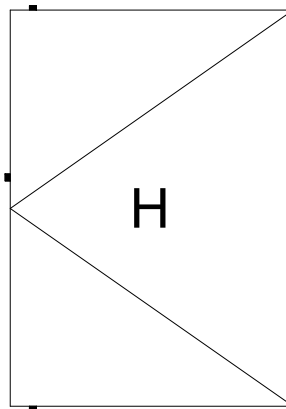
E
2 point
w/ corner cams



F
3 point
w/ corner cams



G
2 point
w/ corner
mushroom cams



H
3 point
w/ stile cam &
corner mushroom cams