

# ARTech plana

CONCEALED HARDWARE SYSTEM FOR TILT&TURN FLUSH SASH WINDOWS

ARTECH PLANA MEANS **DESIGN**  
WITH **MINIMALIST** LINES  
**BEAUTIFULLY DETAILED** AND  
UNDERSTATED COMPONENTS  
**DESIGN STATEMENT** WITH WINDOWS





## HARDWARE FOR WINDOWS

---

# AR**Tech** plana

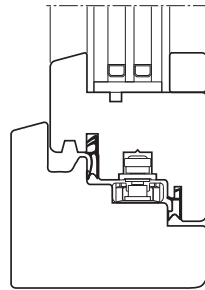
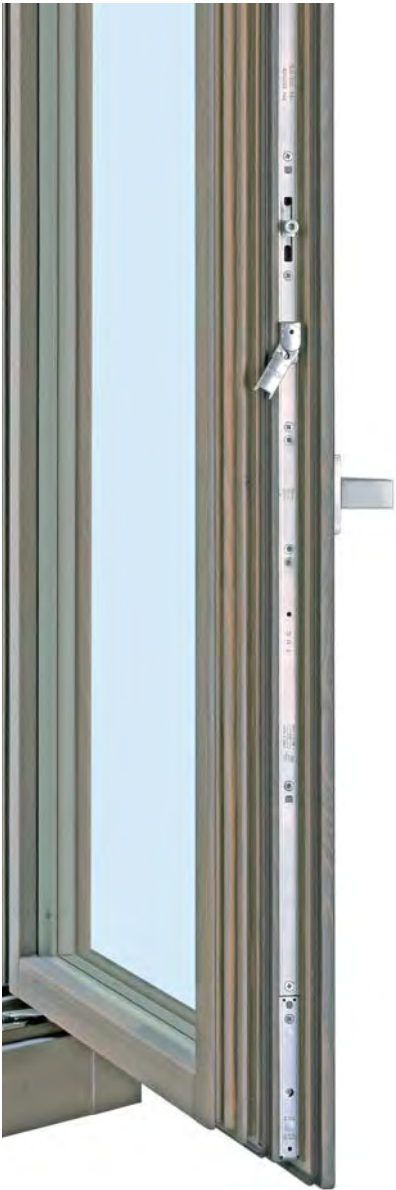
Artech Plana is a concealed tilt&turn hardware system for flush sash windows, designed in Italy by AGB. Artech Plana delivers beautifully understated design and excellent anti-burglar security.

Artech means DESIGN.

Artech Plana is the window solution for modern and contemporary architecture needs. The hardware system offers wide glazing sashes, minimal lines and great attention to detail. Artech intensifies the beauty of the window and provides a new concept in design.



## MINIMAL WELL-DETAILED COMPONENTS



### Plana concealed hinge

150 kg load capacity to support large windows. Providing high performance insulation and anti-burglary security. Plana seamlessly complements minimalist flush sash window design.

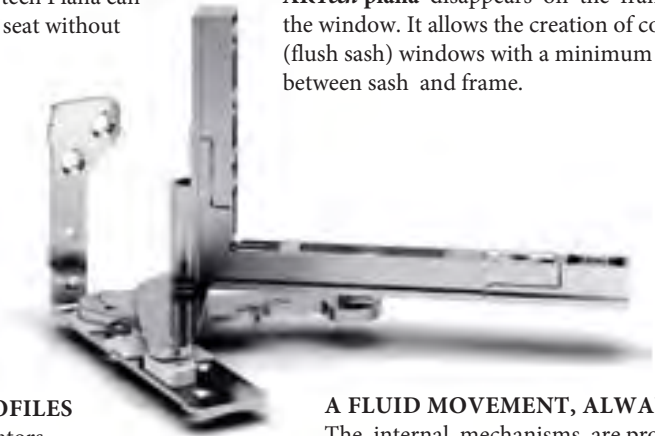


### THE ONLY HINGE WITH AUTO-JIG

On wooden windows, Artech Plana can be installed on the frame seat without using any jig.

### PURE DESIGN

ARTech plana disappears on the frame of the window. It allows the creation of coplanar (flush sash) windows with a minimum gap between sash and frame.



### Minimalist styling open and closed

When the sash is open, the design of espagnolette is elegant and minimalist.

### COMPATIBLE WITH ALL PVC PROFILES

Wide range of accessories and compensators dedicated to PVC profiles.

### A FLUID MOVEMENT, ALWAYS!

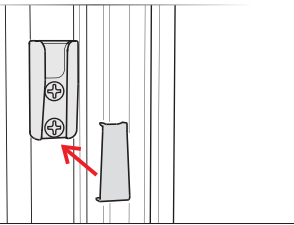
The internal mechanisms are protected by the glider cover which prevent the build up of dust and dirt.



**Strikers with concealed screws**  
 A cleverly designed cover hides the screw top to transform the window design.  
 A key feature of Artech is the anti-burglary security. The system allows a certification in class RC1 with standard components.  
 Beautiful and safe.

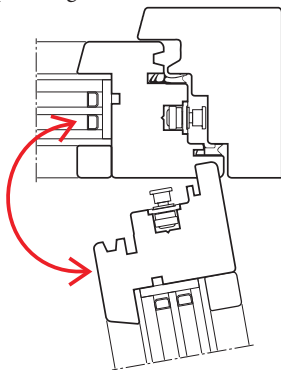


Cam strikers    Tilt striker    DSS striker



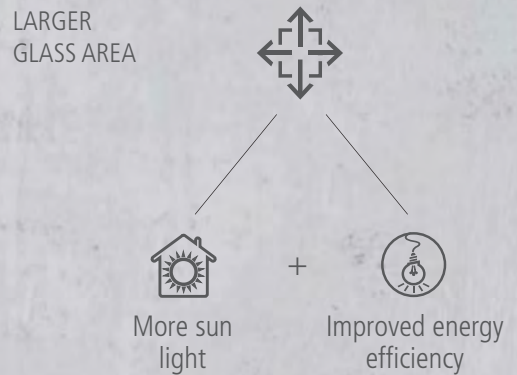
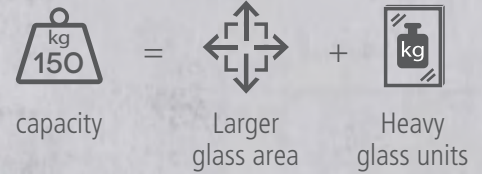
**Flush sash**

Artech Plana achieves flush sash windows with a minimum gap between the sash and frame. Creating the perfect solution for flush sash windows and wooden paneling.



DID YOU KNOW THAT...

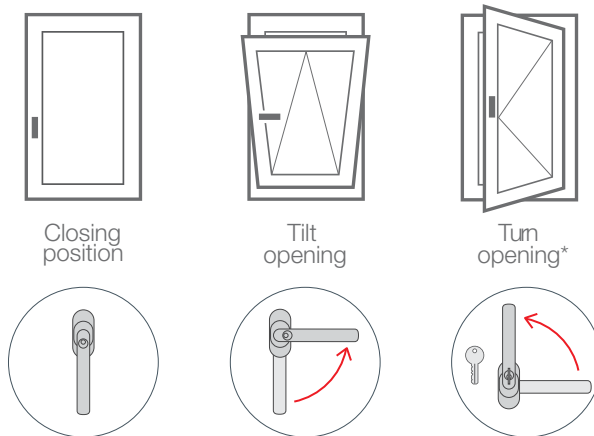
## A 150 Kg HARDWARE SYSTEM IMPROVES THE WELL-BEING AT HOME?



## Artech **TBT**: safety for schools, communities and public places



The **Tilt Before Turn** device (**TBT**) ensures the maximum safety while using windows installed in dangerous positions. The handle in horizontal position allows tilt opening and room airing, avoiding the risk of accidental falls. The use of a dedicated handle allows to unblock the turn opening only using the key.



\* Opening is possible only using the key.

Artech TBT ensures great safety in public places and high floors in general, where there is the need to protect windows from accidental falls. **It is suitable for windows installed in dangerous positions.**



## TECHNICAL INFORMATION

### WINDOW CONFIGURATIONS



simple opening



Tilt&Turn opening



Tilt only

### FRAME MATERIALS



wood



wood-aluminium



aluminium-wood



steel



PVCu

### PERFORMANCES



high load capacity



Wide pressure, lateral and height adjustments



Activeage:  
high protection finish

# ARTech plana

## Activeage: active hi-protection finish

### Activeage



**High corrosion resistance** even in difficult weather conditions.

More than  
**2000**  
hours in salt  
spray test\*

\* according to the regulation EN ISO 9227 without any notch of the surface from red rust.

### Above the law

**Activeage** reaches extraordinary anti-corrosion standards, much higher than the regulation requirements of the EN 13126-1 and outclasses the measurement scale of corrosion resistance indicated in the EN 1670.



*EN 13126-1: requirement and test methods for accessories for windows and doors.*

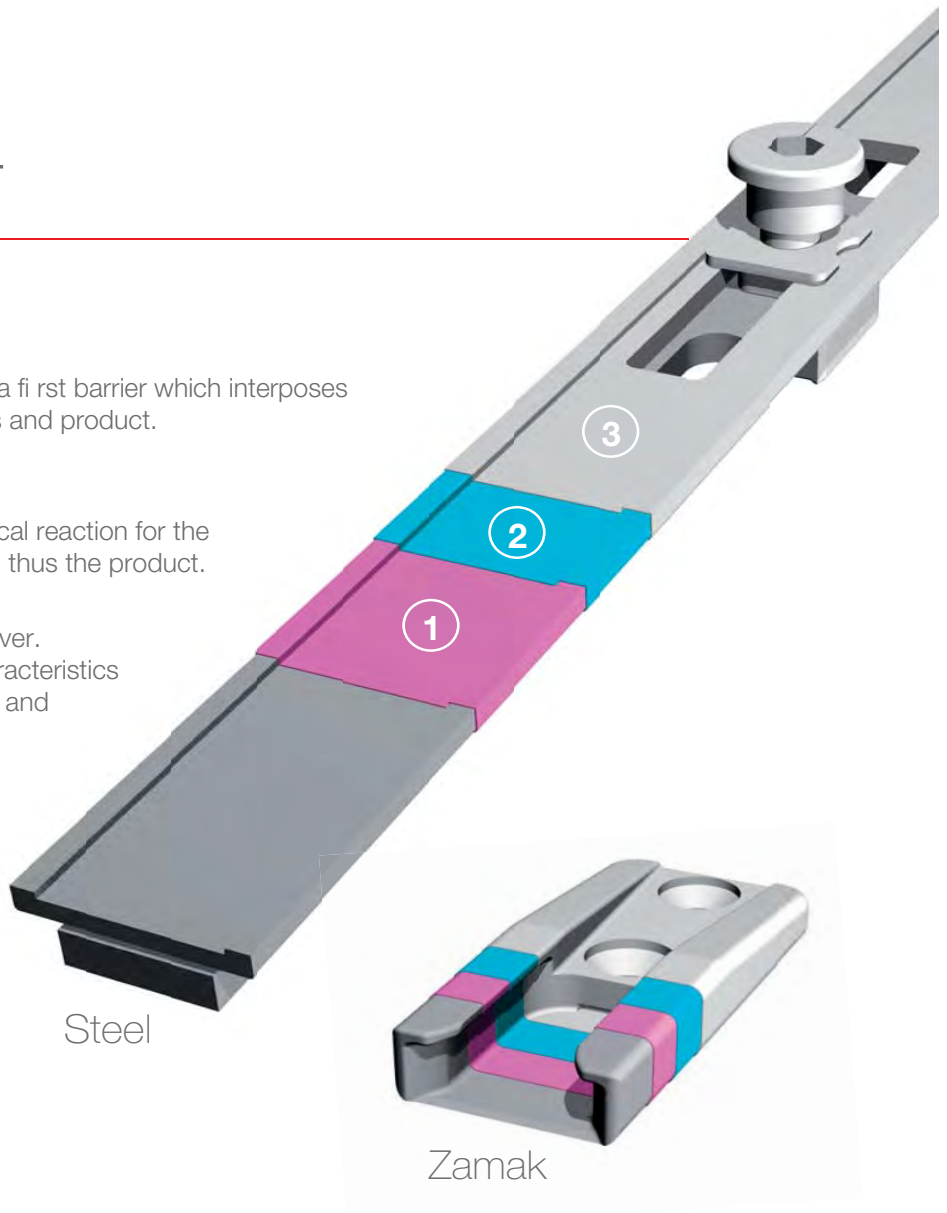
*EN 1670: resistance against corrosion of accessories for windows and doors.*



Performances of Activeage finish are guaranteed only if screws with same or higher corrosion resistance are used, except for stainless steel screws.

# Three-layer cover

- 1 Zinc**  
Protects the metal by creating a first barrier which interposes itself between corrosion agents and product.
- 2 Chromic passivation with nano particles of silica**  
Actively acts with electrochemical reaction for the protection of the Zinc layer and thus the product.
- 3 Active hermetic protection**  
Organic-mineral chromating cover. Maintain the anti-corrosive characteristics even in case of thermal shocks and dynamic stress.



## RESEARCH

In association with research studies and technology developed with partner producers of paint was born **Activeage**.



## PERFORMANCES

The research for materials protection done in accredited institutes prove excellent results of resistance against salt spray, humidity and ageing.



## TOP PRODUCT MASS-PRODUCED

**Activeage** is the standard finish for all windows components, entrance doors and sliding systems in Silver finish.