

# Lift Slide Door

## Adjustable Carriages



### New FFI Adjustable Lift Slide Carriages

FFI's new adjustable lift slide carriage allows for up to 3mm of height adjustment for precise panel alignment.



### Features

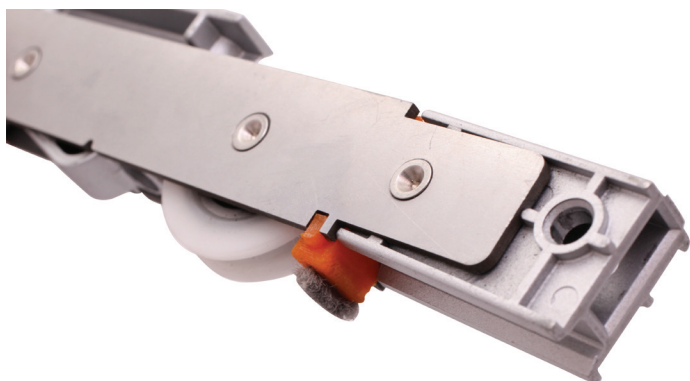
- ▶ **Adjustable** rear carriage to move panels up or down (3mm height adjustment using a 6mm hex wrench) - [New Feature!](#)
- ▶ **Brushes** on both front and rear carriage provide self-cleaning by sweeping dust & debris from the track - [New Feature!](#)
- ▶ **Stainless steel** for all moving parts in choice of two grades (304 or 430)
- ▶ **Maximum corrosion resistance** using stainless steel and Kynar coated components meeting the highest performance standards of AAMA 2605-98
- ▶ **Best warranty** and testing among all lift slide brands
- ▶ **For wood, aluminum clad wood, all metal or PVC panels**
- ▶ **Rated to 660lbs** (300kg) per panel with 2 rollers
- ▶ **Rated to 880lbs** (400kg) with 4 rollers (tandem)



Hex wrench  
not included.

## Adjustable Carriage kits

Part #	Description	Material
<b>LAR3000A18</b>	Carriage kit, adjustable with brush	SST 304
<b>LAR3000A19</b>	Carriage kit, adjustable with brush	SST 430
<b>LAR3000A10</b>	Roller Assembly, adjustable with brush	SST 304
<b>LAR3000A16</b>	Roller Assembly, adjustable with brush	SST 430



Carriage kits include;

- Front & rear roller pair assembly
- 6 Self-drilling carriage screws 4.2x45mm
- 3 link rod guides
- 4 screws for link rod guides, 4.2x20mm
- 2 link rod connecting pins
- 4 bottom cover plate screws, 4.2x20mm
- bottom track cap
- bottom rear cover plate with bumper
- bottom rear cover plate - no bumper

Roller Assembly includes;

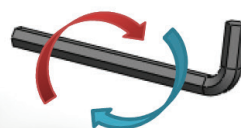
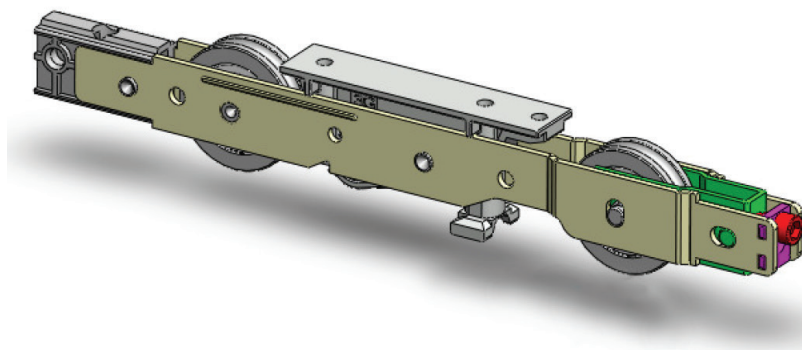
- Front & rear roller pair assembly
- 2 link rod connecting pins

Compatibility: FFI lift slide carriages, locks, link rods & lock bolts must be used together (and are not compatible with other brands).

Compatible lock models for LAR300 carriages:

LAD255SH, LAD170SH, LAD112SH, LAD076SH.

Compatible tracks: any 5mm diameter track for lift slide.



## Ventilation Keep (Optional Accessory)

Part #	Description	Material	Color
<b>LSVK.00.630</b>	Ventilation keep	SST 304	Silver
<b>LSVK.00.631</b>	Ventilation keep	SST 304	Black



The ventilation keep stops the door from sliding freely while allowing natural ventilation, catching the front carriage in place on the track.