

Lift Slide Door Systems

Lift Slide Door Systems

System Highlights

FFI Signature Door Gears
FFI Signature Half-Gears, HD Assist
FFI Signature Gear Extensions
FFI Signature Carriages
FFI Ventilation Keep
FFI Ultravue Carriages
FFI Link Rods, Anti Derailer Lock
FFI Lock bolts, Gear jig
Guides for Aluminum & PVC panels
GreenteQ Clearlift Hardware

Pages

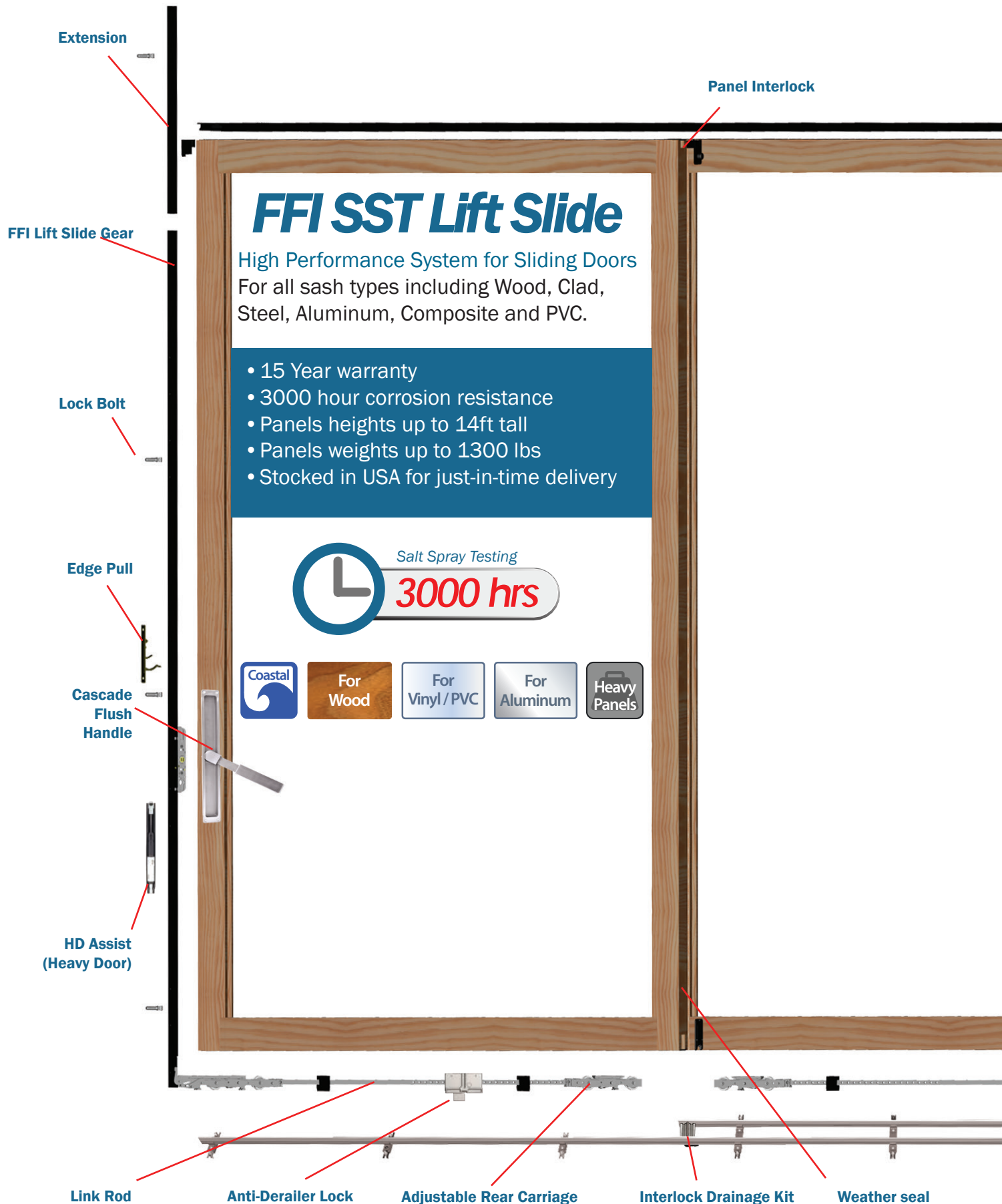
A-2 to A-3
A-4
A-5
A-6
A-7 to A-8
A-8
A-9
A-10
A-11
A-12
A-13 to A-14

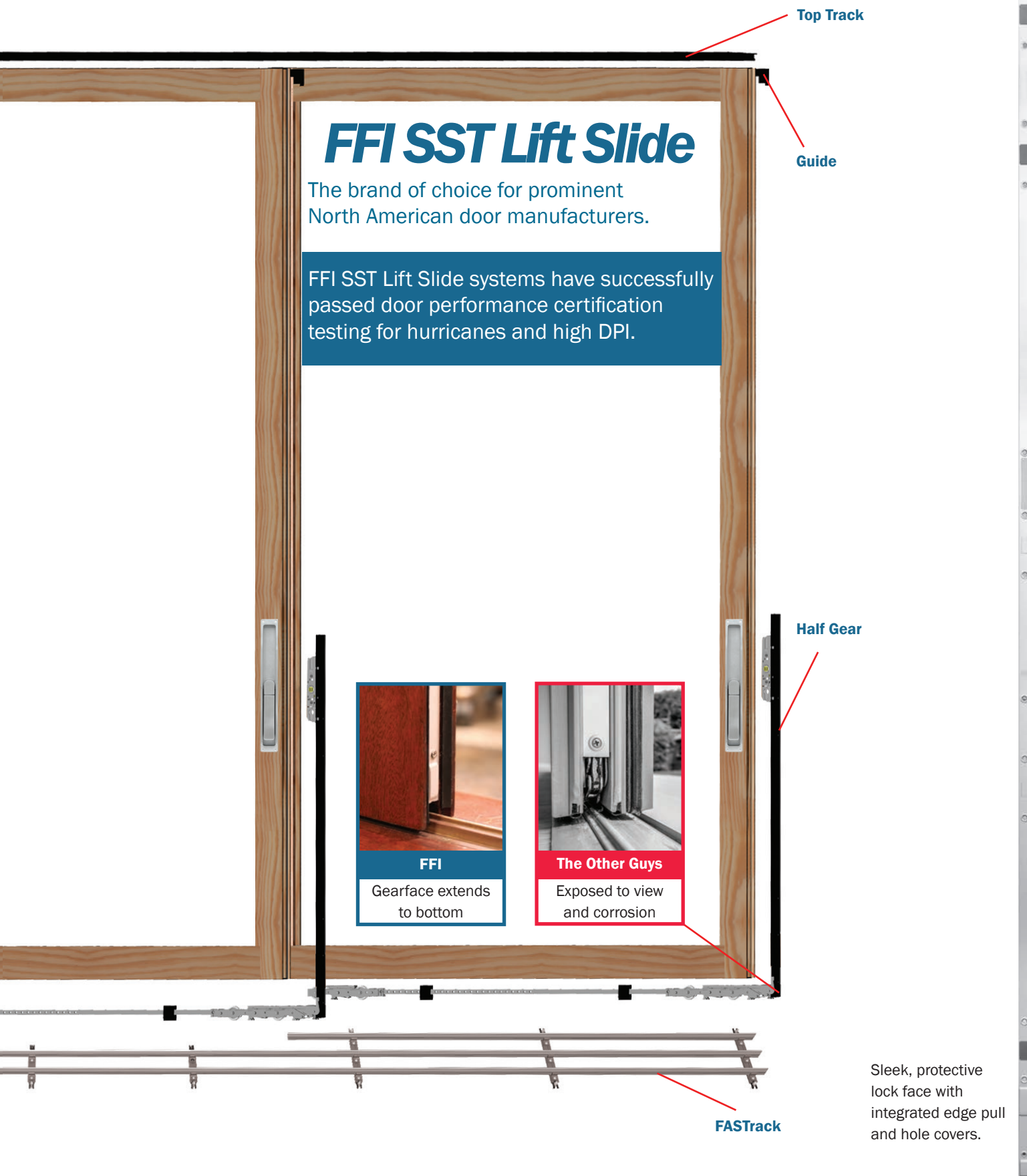
Lift Slide Door Systems

AGB Lift Slide XC System
Bottom Tracks & Guides
FFI FASTrack Systems
FFI Interlock Drainage Kit
Thresholds
Top Tracks & Guides
AGB Auto Brake
Gasket & Weatherseals
Interlocks
FFI SST Screen Rollers

Pages

A-15 to A-18
A-19 to A-20
A-21 to A-22
A-23
A-24 to A-26
A-27 to A-28
A-29
A-30 to A-31
A-32 to A-33
A-34





FFI SIGNATURE LIFT SLIDE DOOR GEARS

- Lift Slide Door Gears for sliding door panels
- For all sash types including wood, clad, steel, aluminum, composite and PVC.

Material Choice	430 or 304 grade Stainless Steel with SST/Brass lock parts
Lock Face	PVDF (Kynar)/Koflux coated anodized aluminum, Black or Silver
Weight Capacity	880 lbs. per panel; Up to 1,320 lbs. with HD assist & tandem rollers (ask for details)
Backsets	37.5mm (1½") or 27.5mm (1¼")
Compatibility	Connects to all FFI SST carriages Fits all lift slide handles with 10mm spindle FFI edge pulls
Locking Points	Up to 4 locking points at jamb (3 more lock points with extensions)
Panel Height	Gear for up to 8'8" panels, or up to 14' with extensions
Gear Height	8'6" (2585.5mm)
Handle Height	39⅞" (1000.5mm) to 39⅞" (1010.5mm) depending on track (ask for details)
Panel Thickness	Minimum 56mm (2¼") for wood, other materials may vary
Testing	ASTM B-117 Salt Spray tested to 3,000 hours corrosion resistance. AAMA 906-21 specification for Sliding Door and Lift Slide Roller Assemblies. Certification tested by others, with high performance for DPI and Hurricane.
Warranty	15 year warranty

FFI Signature Lift Slide Gears

Available in 10-packs (as below) or single gears (ask for details)

Item #	Backset	Material	Finish	Quantity
LAD255SH54-10	37.5mm	430 SST	Black	10-pack
LAD255SH55-10	37.5mm	430 SST	Silver	10-pack
LAD255SH44-10	27.5mm	430 SST	Black	10-pack
LAD255SH45-10	27.5mm	430 SST	Silver	10-pack
LAD255SH50-10	37.5mm	304 SST	Black	10-pack
LAD255SH51-10	37.5mm	304 SST	Silver	10-pack
LAD255SH40-10	27.5mm	304 SST	Black	10-pack
LAD255SH41-10	27.5mm	304 SST	Silver	10-pack

Included with gears - Available separately

Item #	Description	Material	Finish	Quantity
LSBOLT0040	Carriage screw, M5x13mm	SST	Black	1
LSBOLT0030	Carriage screw, M5x13mm	SST	Silver	1
LLBCAP0001	Lock bolt hole caps	Nylon	Black	5
LLBCAP0000	Lock bolt hole caps	Nylon	Grey	5
LSDGCAP001	Cylinder screw cap	Nylon	Black	1
LSDGCAP000	Cylinder screw cap	Nylon	Grey	1

HD (Heavy Door) Assist for 660-1,320 lbs doors

Sold separately - Screws for wood sash

Item #	Description	Minimum Panel Weight
LAD02SH	Controlled handle motion dampener	660 lbs. (300kg)

Accessories

Sold separately - Screws for wood sash

Item #	Description	Material	Finish	Quantity
LSBOLT1000-15	Screws, 4.8x65mm (2⅝")	SST	Black	15-pack
LSBOLT2003-15	Screws, 4.8x65mm (2⅝")	SST	Silver	15-pack

LAD02SH HD Assist
Attaches to FFI
LAD255SHxx full gears
LAD112SHxx half gears





LAD02SH HD Assist
Attaches to FFI
LAD255SHxx full gears
LAD112SHxx half gears

FFI SIGNATURE HALF GEARS FOR LIFT SLIDE

- Lift Slide Door Half Gears for multi-panel layouts with intermediate (non-locking) panels.
- Half gears cost 1/3 less than full gears

Material Choice	430 or 304 grade Stainless Steel with SST/Brass lock parts
Lock Face	PVDF (Kynar)/Koflux coated anodized aluminum, Black or Silver
Weight Capacity	880 lbs. per panel; Up to 1,320 lbs. with HD assist & tandem rollers (ask for details)
Backsets	37.5mm (1½") 27.5mm (1¼")
Compatibility	Connects to all FFI SST carriages Fits all lift slide handles with 10mm spindle FFI edge pulls
Locking Points	None
Panel Height	Gear for up to 8'8" panels, or up to 14' with cover rail
Gear Height	45.5" (1155.5mm)
Handle Height	39⅜" (1000.5mm) to 39⅞" (1010.5mm) depending on track (ask for details)
Panel Thickness	Minimum 56mm (2¼") for wood, other materials may vary
Testing	ASTM B-117 Salt Spray tested to 3,000 hours corrosion resistance. AAMA 906-21 specification for Sliding Door and Lift Slide Roller Assemblies. Certification tested by others, with high performance for DPI and Hurricane.
Warranty	15 year warranty

FFI Signature Half Gears for Lift Slide

Available in 10-packs (as below) or single gears (ask for details)

Item #	Backset	Material	Finish	Quantity
LAD112SH54-10	37.5mm	430 SST	Black	10-pack
LAD112SH55-10	37.5mm	430 SST	Silver	10-pack
LAD112SH44-10	27.5mm	430 SST	Black	10-pack
LAD112SH45-10	27.5mm	430 SST	Silver	10-pack
LAD112SH50-10	37.5mm	304 SST	Black	10-pack
LAD112SH51-10	37.5mm	304 SST	Silver	10-pack
LAD112SH40-10	27.5mm	304 SST	Black	10-pack
LAD112SH41-10	27.5mm	304 SST	Silver	10-pack

Included with gears - Available separately

Item #	Description	Material	Finish	Quantity
LSBOLT0040	Carriage screw, M5x13mm	SST	Black	1
LSBOLT0030	Carriage screw, M5x13mm	SST	Silver	1

HD (Heavy Door) Assist for 660-1,320 lbs doors

Screws are sold separately

Item #	Description	Minimum Panel Weight
LAD02SH	Controlled handle motion dampener	660 lbs. (300kg)

Accessories

Sold separately

Item #	Description	Material	Finish	Quantity
LSBOLT1000-15	Screws, 4.8x65mm (2-5/8")	SST	Black	15-pack
LSBOLT2003-15	Screws, 4.8x65mm (2-5/8")	SST	Silver	15-pack

14ft Max Door Height



Secure bolt-in rod

FFI GEAR EXTENSIONS WITH LOCK POINT

- Cuttable gear extensions for any panel, to add locking points and height to 14 feet
- Features threaded rod for more reliability than set-screw style extensions by other brands

Material	Drive rod: 304 grade Stainless Steel Face: Aluminum with heavy-duty PVDF (Kynar) finish
Length	24" (625mm)
Panel Height	Up to 3 extensions can be used. Maximum door height is 14ft.
Locking Point	Adds 1 locking point
Compatibility	All FFI lift slide gears except for half gears

Lift Slide Gear Extensions

Includes M6x18mm screw and connection bracket

Item #	Material	Finish
LDG0625000	304 SST	Black
LDG0625001	304 SST	Silver

FFI COVER RAIL EXTENSIONS

A blank cover plate, to add height up to 14 feet and a neat appearance, without adding locking points.

Material	Aluminum face with heavy duty PVDF (Kynar) finish
Length	24" (625mm), cuttable
Panel Height	Up to 3 extensions can be used. Maximum door height is 14ft.
Compatibility	All FFI lift slide gears (door or window)

Cover Rail Extensions

Includes M6x18mm screw and connection bracket

Item #	Material	Finish
LSASH00008	Aluminum	Black
LSASH00009	Aluminum	Silver

Included with cover rail extension - Available separately

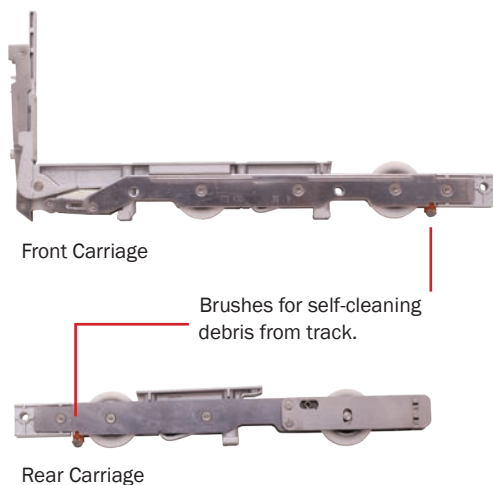
Item #	Description
LS00000197	Connection bracket *Required when connecting cut extensions



Connection Bracket

FFI SIGNATURE LIFT SLIDE CARRIAGES

- High performance rollers with adjustable rear carriage
- For all sash types including wood, clad, steel, aluminum, composite and PVC



Material Choice	430 grade SST with chrome plated steel wheel bearings or Premium 304 grade SST with 630 series wheel bearings
Features	PVDF (Kynar)/Koflux-coated zamak body Low friction Delrin wheels Nylon Brushes for self-cleaning debris from track
Weight Capacity	Up to 660 lbs (300kg) per panel at 100,000 cycles (ask for details) (Up to 1,320 lbs with Tandem Kit, see next page)
Compatibility	LAD255SH gears, LAD112SH half gears or LAD170SH window gears
Panel Thickness	Minimum 56mm (2¼") for wood, other materials may vary
Track	Compatible with 5mm diameter lift slide track
Testing	ASTM B-117 Salt Spray tested to 3,000 hours corrosion resistance. AAMA 906-21 specification for Sliding Door and Lift Slide Roller Assemblies. Certification tested by others, with high performance for DPI and Hurricane.
Warranty	15 year warranty

FFI Signature Carriage Assemblies

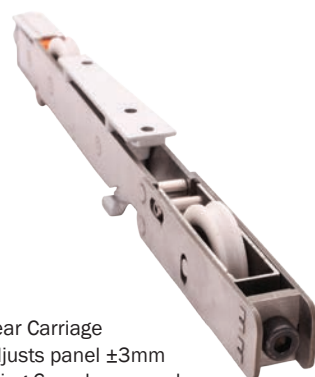
Includes front carriage, rear carriage, link rod pins

Item #	Description	Material
LAR3000A16	Adjustable carriage assembly	430 SST
LAR3000A11	Adjustable carriage assembly	304 SST

FFI Signature Carriage Kits

For wood panels (includes items detailed below)

Item #	Description	Material
LAR3000A19	Adjustable carriage kit	430 SST
LAR3000A20	Adjustable carriage kit	304 SST



Kit Details (Items also available separately)

Item #	Description
LAR3000A16	430 SST front/rear carriage assembly with pins or
LAR3000A10	304 SST Front/rear carriage assembly with pins
LSBOLT2002-6	Carriage screws (6), 4.2x45mm
LSBG000001	Link rod guides (3)
LSBOLT2001-4	Link rod guide screws (4), 4.2x20mm
L000000126	Link rod connecting pins (2)
LSBOLT1002-4	Bottom cover plate screws (4), 4.2x20mm
L000000207	Bottom track cap
LSBRC00100	Bottom rear cover plate with bumper*
LSBRC00006	Bottom rear cover - no bumper*

*Two cover plate options included



LSBRC00100



LSBRC00006



L000000207



L000000126



LSBG000001



LSBOLT1002



LSBOLT2001



LSBOLT2002

FFI SIGNATURE TANDEM CARRIAGE KIT

Add to FFI Signature carriages for higher weight capacity panels over 600 lbs.



LAR400T004

Material Choice	430 grade SST with chrome plated steel wheel bearings Premium 304 grade SST with 440 series wheel bearings
Features	PVDF (Kynar)/Koflux-coated zamak body Low friction Delrin wheels
Weight Capacity	Up to to 880 lbs (400kg) per panel 50,000 cycles (ask for details) Up to to 1,320 lbs (600 kg) per panel at 15,000 cycles (ask for details)
Compatibility	FFI Signature Carriage Kit LAR3000A19 or LAR3000A20 FFI Signature Carriage Assembly LAR3000A16 or LAR3000A11
Panel Thickness	56mm (2 1/4") minimum, 68mm, or thicker panels
Track	Compatible with 5mm diameter lift slide track
Testing	ASTM B-117 Salt Spray tested to 3,000 hours corrosion resistance. AAMA 906-21 specification for Sliding Door and Lift Slide Roller Assemblies. Certification tested by others, with high performance for DPI and Hurricane.
Warranty	15 year warranty

FFI Signature Tandem Roller Kit

Item #	Description	Material
LAR400T004	Tandem 2-roller kit	SST 430
LAR400T005	Tandem 2-roller kit	SST 304

Kit Includes (Items available separately)

Item #	Description
L000000126	Link rod connecting pins (2)
LCR00000040	Link rod pieces (2), 40mm each
LSBG000000	Link rod guides (3)
LSBOLT2002	Link rod guide screws (4), 4.2x20mm
LSBOLT1002	Bottom cover plate screws (4), 4.2x45mm



L000000126



LCR00000040



LSBOLT2002



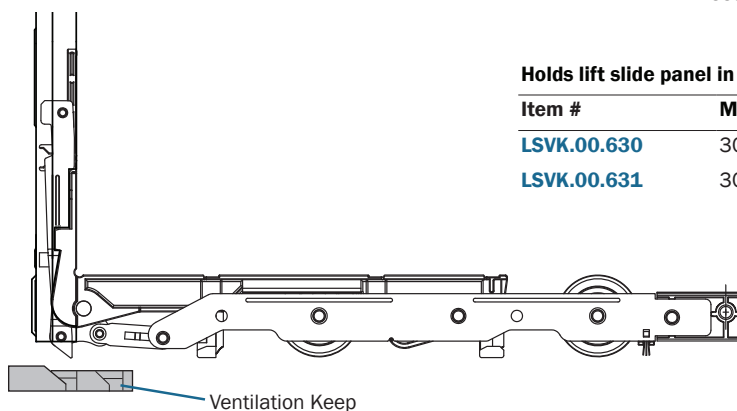
LSBOLT1002-4

FFI VENTILATION KEEP (Optional)

Carriage	LAR3000A19 Adjustable Carriage 430 SST Kit
Compatibility	LAR3000A20 Adjustable Carriage 304 SST Kit LAR3000A16 Adjustable Carriage 430 Assembly LAR3000A11 Adjustable Carriage 304 Assembly
Track	Compatible with 5mm diameter lift slide track
Applications	Holds lift slide panels in place for ventilation Use 2 at the center meeting point for symmetrical bi-parting panels

Holds lift slide panel in place for natural ventilation

Item #	Material	Finish
LSVK.00.630	304 SST	Mill
LSVK.00.631	304 SST	Black



Low Profile Option

Brushes for self-cleaning
debris from track.

The height-adjustable rear carriage
adjusts the sliding sash ±3mm, to quickly
and easily align sash to jamb.

FFI ULTRAVUE LIFT SLIDE DOOR SYSTEM

- A Lift Slide solution for ultra slim profiles with maximum glass view
- For all sash types including wood, combination, steel, aluminum, composite and PVC
- Same quality, materials and warranty as FFI Signature Series

Advantages	Cleverly scaled down; bottom rail can be 10mm shorter than usual lift slide carriages
Material Choice	430 grade SST with chrome-plated steel wheel bearings 304 grade SST with 440 series wheel bearings PVDF (Kynar)/Koflux-coated zamak body with low friction Delrin wheels Nylon Brushes for self-cleaning debris from track
Weight Capacity	Up to 550 lbs (250kg) per panel at 50,000 cycles (ask for details) (up to 990 lbs (450 kg) with Tandem Kit, see below)
Compatibility	All FFI Lift Slide Door and Window gears
Tandem Option	Tandem 200V Roller Kit LAR200T003 or LAR200T004
Panel Thickness	56mm (2¼") minimum
Track	Compatible with 5mm diameter lift slide track
Testing	ASTM B-117 Salt Spray tested to 3,000 hours corrosion resistance. AAMA 906-21 specification for Sliding Door and Lift Slide Roller Assemblies.
Warranty	15 year warranty

FFI UltraVue Carriage Assembly

- Compatible with all FFI Lift Slide Door & Window Gears.
- Assemblies include carriages, 2 link rod pins, 4 screws 4.2x38mm (#10 x 1.5")

Item #	Description
LAR2000A14	304 SST UltraVue Front & Rear carriages
LAR2000A11	430 SST UltraVue Front & Rear carriages

FFI UltraVue Tandem Roller Kit - For panels 661-990 lbs

- Use with UltraVue Carriage Assembly and 255SH or 112SH door gears
- Ask for details on weight capacity and cycle testing
- Kits include carriages, 2 link rod pins, 2 40mm link rod pieces, 4 screws 4.2x38mm (#10 x 1.5")

Item #	Description
LAR200T003	304 SST UltraVue Tandem carriage kit
LAR200T004	430 SST UltraVue Tandem carriage kit



Kit Includes (Items available separately)

Item #	Description
L000000126	Link rod connecting pins (2)
LCR0000040	Link rod pieces (2), 40mm each
LSBG000000	Link rod guides (3)
LSBOLT2002	Link rod guide screws (4), 4.2x20mm
LSBOLT1002	Bottom cover plate screws (4), 4.2x45mm



L000000126



LCR0000040



LSBG000000



LSBOLT2002



LSBOLT1002-4

Carriage shown with
LAD255SH door gear
with 27.5mm backset.

LINK RODS FOR FFI SST LIFT SLIDE

Needed with FFI lift slide carriages. Pre-drilled holes for connecting pins. Made from premium 304 grade stainless steel.

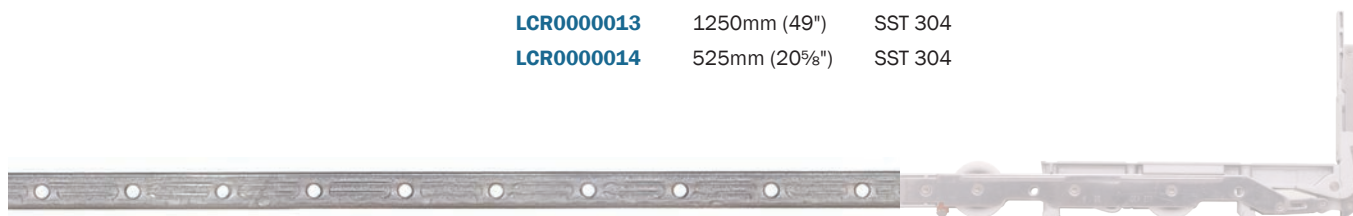


Link rod comes pre-drilled, ready to attach to lift slide carriage.

Material	304 grade Stainless Steel
Thickness	4mm (3/16")
Carriage Compatibility	All FFI Carriages assemblies and Carriage Kits LAR3000A19 Adjustable Carriage 430 SST Kit LAR3000A18 Adjustable Carriage 304 SST Kit LAR3000A16 Adjustable Carriage 430 Assembly LAR3000A10 Adjustable Carriage 304 Assembly LAR2000A10 UltraVue Carriage 304 SST Assembly

Link Rods

Item #	Length	Material
LCR0000012	2600mm (102")	SST 304
LCR0000013	1250mm (49")	SST 304
LCR0000014	525mm (20 5/8")	SST 304



FFI ANTI-DERAILER LOCK KIT - BOTTOM TRACK LOCK

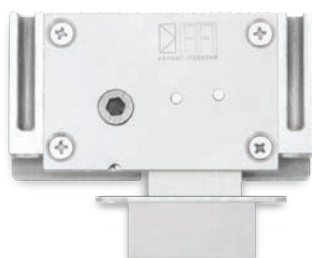
Strength and security for sliding doors. Provides additional bottom track security locking point. Successfully used in door performance certification testing for hurricanes and high DPL.

- Two click positions, 9/16" & 3/4" for variable sill depths
- Compatible with all LAR300 and LAR400 tandem carriages

Material	304 grade Stainless Steel	
Thickness	4mm (3/16")	
Track Compatibility	FASTrack	FASTrack Drainage
	Low Profile Bottom Track	Climatech Threshold

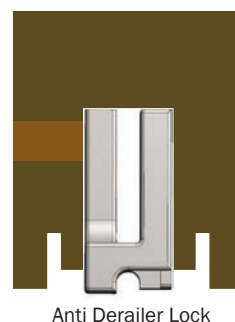


Item #	Description	Material
LLB.01.ASSM	Anti-derailer lock kit, 47mm H, 9/16" & 3/4" throw	SST 304
	- Lock mechanism	- Access Grommet
	- Climatech Shim	- Strike Keep/Screws
	- Mounting Screws	- Allen Wrench
	(Machine & wood type)	
LLB.01.DRL	Optional accessory to install Allen key access grommet	Steel
	Drill bit size M, 7.5mm diameter	



Access Grommet
(Included with Anti Derailer Lock)

LLB.01.DRL
Drill Bit



Anti Derailer Lock



LLB4000000



LLB4000001



LLB4000002



LLB4000003



LLB.631.12



LLB1S



4619117



1627386



LS100.24.630



LS100.24.631

LOCK BOLTS FOR FFI LIFT SLIDE GEARS

304 grade stainless steel lock bolts, use with FFI lift slide gears, one for each locking point.

Type J Lock Bolts

Item #	Description	Use	Material	Finish
LLB4000000	Type J lock bolt	Wood or metal jamb	304 SST	Silver
LLB4000001	Type J lock bolt	Wood or metal jamb	304 SST	Black
LLB4000002	Type J lock bolt	Wood jamb	304 SST	Silver
LLB4000003	Type J lock bolt	Wood jamb	304 SST	Black

Type N Coaxial Lock Bolts

Item #	Description	Use	Material	Finish
LLB.630.12	Tapered Type N Coaxial lock bolt	Wood or metal jamb	304 SST	Silver
LLB.631.12	Tapered Type N Coaxial lock bolt	Wood or metal jamb	304 SST	Black
LLB1S	Extra shim for Type N Coaxial lock bolt	Wood or metal jamb	304 SST	Silver

Type N coaxial lock bolts include:

- (1) backplate
- (2) M5x20 screws
- (2) M5x60mm screws
- (1) shim



Type P Coaxial Lock Bolts

Item #	Description	Use	Material	Finish
4619117	Type P Coaxial lock bolt	Vinyl, metal or wood jamb	304 SST	Silver
1627565-2	Lock bolt shim kit	Vinyl, metal or wood jamb	430 SST	Silver
1627386	Lock bolt shim kit	Vinyl, metal or wood jamb	304 SST	Silver

FFI LIFT SLIDE JIG

Use to position FFI lift slide lock bolts (all types).

Item #	Description	Material
G00746.00.05-M	Lock bolt positioner jig with notch	Steel

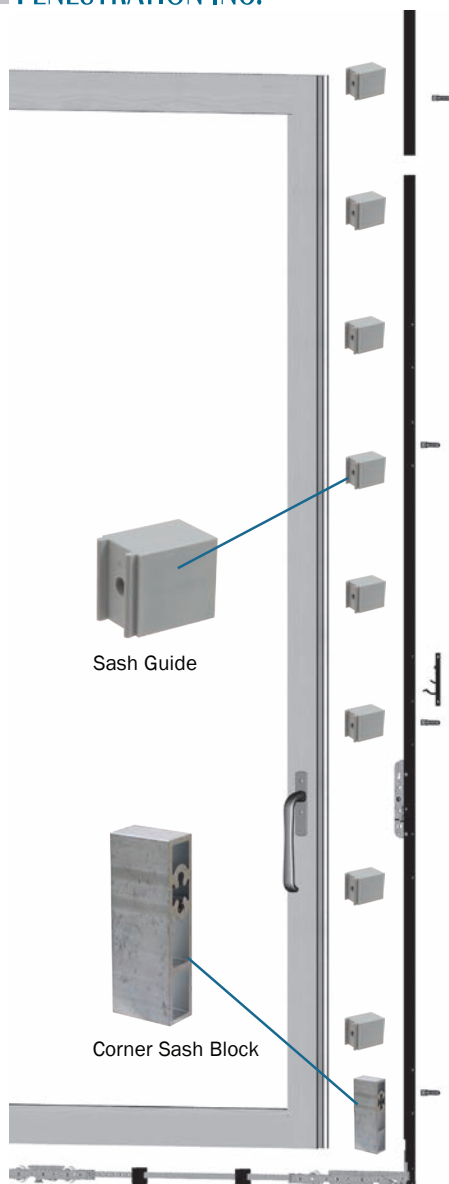
FFI STAINLESS STEEL FLUSH EDGE PULLS

FFI SST Signature lift slide door gears are fully compatible and ready to accept these FFI edge pulls.

- Stainless steel narrow profile construction
- Screws (M5 or #10 flathead) by others

FFI Edge Pulls

Item #	Description
LS100.24.630	304 stainless steel, satin finish
LS100.24.631	304 stainless steel, E-Coat Black



Sash Guide

Corner Sash Block

Additional Sizes

Other depths available
7.5mm, 10mm,
23mm, 28mm
available by special order.

FFI SST LIFT SLIDE FOR ALUMINUM AND VINYL DOORS

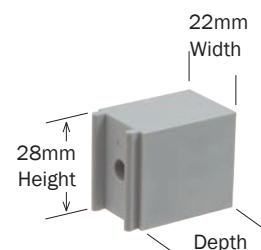
FFI Stainless Steel lift slide systems have accessories for easy compatibility with aluminum and vinyl profiles.

PVC	WOOD	AL-WOOD	ALUMINUM

Sash Guides

Sized for snap-on attachment to FFI lift slide gears
Buy 8 guides for 8' panel, 12 guides for 12' panel

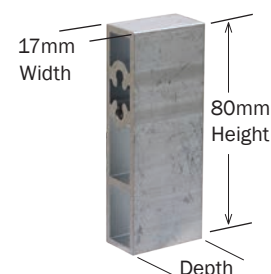
Item #	Depth	Material
LSG2811000	11mm	Aluminum
LSG2814501	14.5mm	Nylon
LSG2815801	15.8mm	Nylon
LSG2817000	17mm	Aluminum
LSG2818801	18.8mm	Nylon
LSG2820500	20.5mm	Aluminum
LSG2825001	25mm	Nylon
LSG2830001	30mm	Nylon



Corner Sash Block

Connects to each front carriage

Item #	Depth	Material
LSB1100000	11mm	Aluminum
LSB1450000	14.5mm	Aluminum
LSB1580000	15.8mm	Aluminum
LSB1700000	17mm	Aluminum
LSB1880000	18.8mm	Aluminum
LSB2050000	20.5mm	Aluminum
LSB2500000 *	25mm	Aluminum
LSB3000000	30mm	Aluminum



*Compatible with VekaSlide 70 and Euroview 70 vinyl profiles; Ask FFI for details.

Carriage Support Kit

Sold in kit of 3 pieces

Item #	Description
LARSP00000	Lift Slide Carriage Support Kit, 3pcs



GREENTEQ CLEARLIFT LIFT SLIDE HARDWARE

FFI is the exclusive North American distributor for Greenteq hardware by VBH (GB) Ltd.

Compatible Sashes	All sash types (wood, metal, PVC, etc.)
System Materials	Aluminum, zinc, and steel
Backset	37.5mm
Capacity	Up to 400kg sash weight
Warranty	10 years

- Clearlift core items (carriages, gear, link rail and strikes) are suited for any material and layout; ask FFI for help with accessories
- Sash size maximum 3300mm wide x 2700mm tall (2 gear heights available)
- Sashes up to 300kg with standard carriage set; up to 400kg with added tandem carriage set
- Handle height 995mm
- Carriage features include track-cleaning brushes
- Gear features bottom extension to conceal carriages
- Night ventilation with available night vent strike plate
- Corrosion protection to EN1670 grade 4
- Cycle tested to 25,000 cycles
- Compatible with most any lift slide profile (Deceuninck, Veka, Kommerling, Rehau, etc); Install kit available for Reynaers aluminum profiles with XO and XX layouts

Clearlift Core Elements

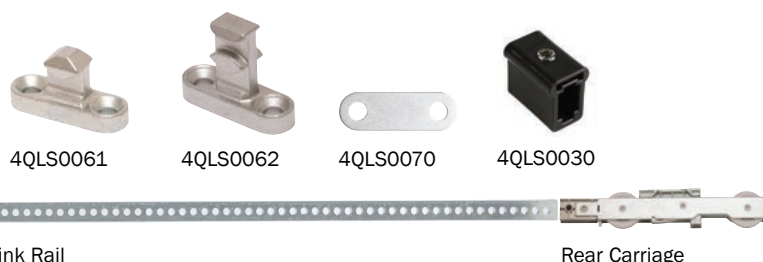
Item #	Description
4QLS0001	Carriage set for up to 300kg doors
4QLS0002	Carriage Tandem set for up to 400kg doors (use with 4QLS0001 set)
4QLS0010A	Drive Gear - size 1 SRH 1750-2290mm, Silver, Class II anodized
4QLS0011A	Drive Gear - size 2 SRH 2291-2700mm, Silver, Class II anodized
4QLS0020	Link rail for carriages 1500mm (59") L
4QLS0027	Link rail pin (use 2 per link rail to connect carriages)
4QLS0030	Link rail guide bracket (for any sash type)
4QLS0061	Strike (lock bolt) 9mm, steel
4QLS0062	Strike (lock bolt) for night ventilation 9mm, steel

Clearlift - Accessories for Wood and other panel types

These items and more available to suit most any application; also see A-11 & A-12 and ask FFI for assistance.

Item #	Description
4QLS0060	Positioning jig for strike
4QLS0070	Strike packer 1mm shim for lock bolts
4QLS0071	Strike packer 2mm shim for lock bolts
LLB4000000	Lock bolt 304 SST - For wood sashes
LSBOLT0030	Carriage screw, Silver
LSBOLT2002-6	Carriage screws (6), Silver - for wood sashes
LSBOLT2003-15	Gear screws (15), Silver - for wood sashes

Clearlift gearface extends to bottom to conceal carriage



Front Carriage

4QLS0020 Link Rail

Rear Carriage



Clearlift Accessories for Aluminum Lift Slide Profiles

Clearlift is compatible with most any lift slide profile (Deceuninck, Veka, Kommerling, Rehau, etc); install kit available for Reynaers aluminum profiles with XO and XX layouts.

These items and more available to suit most any application; also see A-11 & A-12 and ask FFI for assistance

Item #	Description
4QLS0040	Distance block (sash block) for front carriage
4QLS0050	Distance blocks 20mm set for drive gear with Reynaers profile
4QLS0030	Link rail guide bracket
4QLS0100	Screw pack with rail connecting pins
4QLS0110	Glass support packer



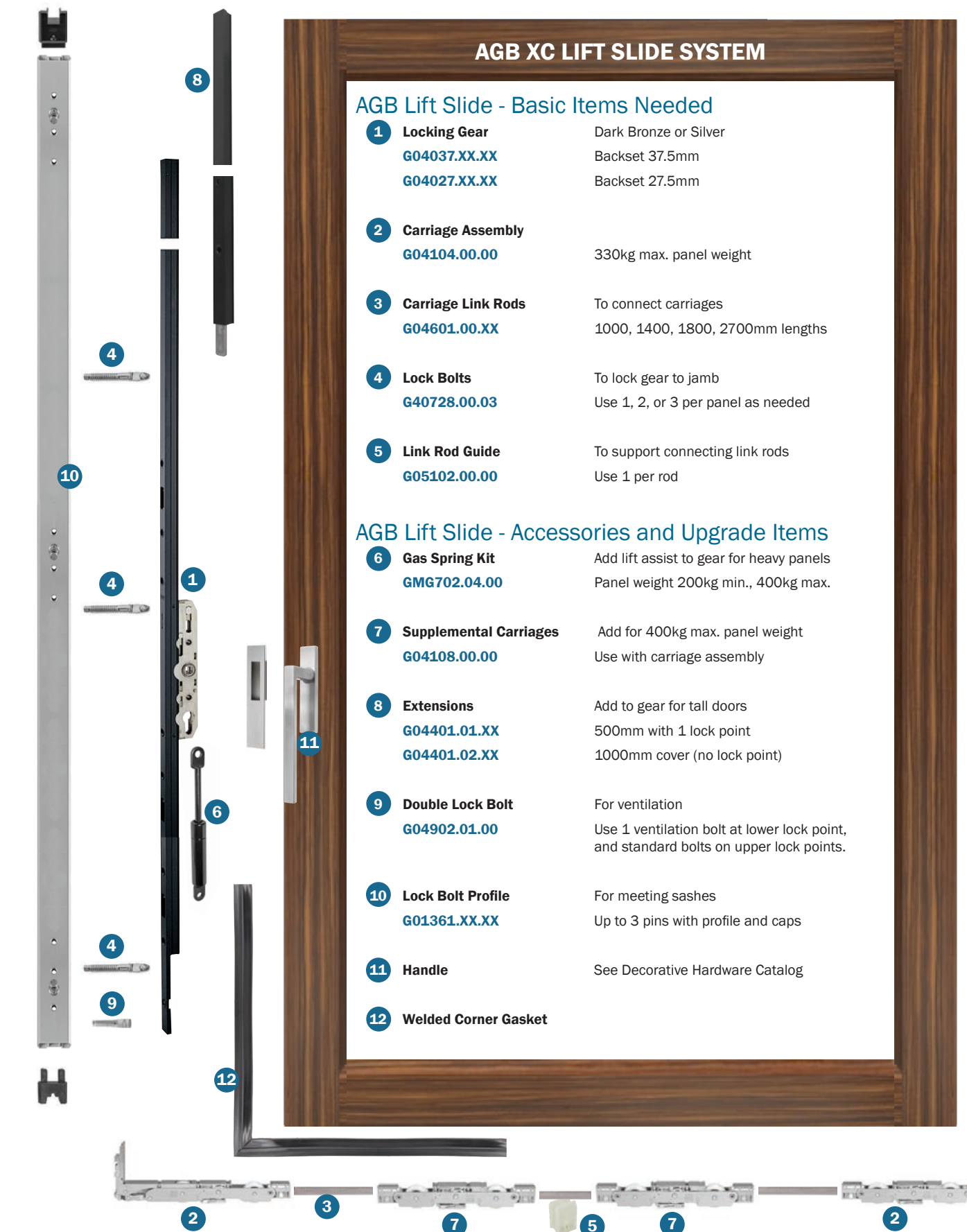
AGB XC LIFT SLIDE SYSTEM

AGB Lift Slide - Basic Items Needed

- | | |
|---|--|
| 1 Locking Gear
G04037.XX.XX
G04027.XX.XX | Dark Bronze or Silver
Backset 37.5mm
Backset 27.5mm |
| 2 Carriage Assembly
G04104.00.00 | 330kg max. panel weight |
| 3 Carriage Link Rods
G04601.00.XX | To connect carriages
1000, 1400, 1800, 2700mm lengths |
| 4 Lock Bolts
G40728.00.03 | To lock gear to jamb
Use 1, 2, or 3 per panel as needed |
| 5 Link Rod Guide
G05102.00.00 | To support connecting link rods
Use 1 per rod |

AGB Lift Slide - Accessories and Upgrade Items

- | | |
|---|--|
| 6 Gas Spring Kit
GMG702.04.00 | Add lift assist to gear for heavy panels
Panel weight 200kg min., 400kg max. |
| 7 Supplemental Carriages
G04108.00.00 | Add for 400kg max. panel weight
Use with carriage assembly |
| 8 Extensions
G04401.01.XX
G04401.02.XX | Add to gear for tall doors
500mm with 1 lock point
1000mm cover (no lock point) |
| 9 Double Lock Bolt
G04902.01.00 | For ventilation
Use 1 ventilation bolt at lower lock point,
and standard bolts on upper lock points. |
| 10 Lock Bolt Profile
G01361.XX.XX | For meeting sashes
Up to 3 pins with profile and caps |
| 11 Handle | See Decorative Hardware Catalog |
| 12 Welded Corner Gasket | |





Front Carriage



Rear Carriage



Tandem Pair Carriages



AGB XC WOOD LIFT SLIDE SYSTEM

- For sashes up 728 lbs. (330kg) per panel
- Available supplementary carriage kit for panels up to 968lbs. (440kg)
- For use with 5mm diameter lift slide track
- For lift slide panels, use these four components all of the same brand Carriages, Lock bolts, Gears and Link Rods
- Activeage finish is salt-spray tested to 2000+ hours corrosion resistance
- Ask FFI for assistance for system for vinyl or metal panels
- Screws: AGB recommends 4.5x35mm.

AGB Carriages

Item #	Description	Material	Finish
G04104.00.00	Lift Slide Carriage Assembly (Front and Rear Carriage, 1 each)	Steel	Silver Activeage
G04108.00.00	Supplementary Carriages (1 tandem pair)	Steel	Silver Activeage
G04114.00.00	Lift Slide Carriage Assembly (Front Carriage and Rear Adjustable Carriage, 1 each)	Steel	Silver Activeage

AGB Carriage Link Rods

4mm set screws provided (with carriage assembly)

Item #	Length	Sash Width 330kg panels	Sash Width 440kg panels	Finish
G04601.00.01	1000mm (39")	1740mm	2340mm	Silver Activeage
G04601.00.02	1400mm (55")	2140mm	2740mm	Silver Activeage
G04601.00.03	1800mm (71")	2540mm	3140mm	Silver Activeage
G04601.00.04	2700mm (106")	3440mm		Silver Activeage

AGB XC Carriage Link Rod Guide

Item #	Description	Material
G00728.00.12	Link Rod Guide. Use one per link rod	Plastic

AGB recommends 4.5 x 30mm screw (not included)





G04037.04.02

AGB XC WOOD LIFT SLIDE SYSTEM

- Standard backset 37.5mm; 27.5mm also available
- For lift slide panels, use these four components all of the same brand
Carriages, Lock bolts, Gears and Link Rods
- Gears include components with steel and zamak material, with Activeage finish salt-spray tested to 2000+ hours corrosion resistance
- Aluminum face profiles have Class II anodized finish
- Ask FFI for assistance for system for vinyl or metal panels
- Screws: AGB recommends 4.5x45mm.

AGB Lift Slide Gears (37.5mm backset)

27.5mm backset models available upon request

Item #	Sash Height	Handle Height (low/high track)	GR (size)	Finish
G04037.03.01	1770 - 2150mm (70" to 84.5")	1000/1010mm	3	Silver anodized
G04037.04.01	1920 - 2400mm (76 to 94.5")	1000/1010mm	4	Silver anodized
G04037.05.01	2401 - 2750mm (94.5" to 108")	1000/1010mm	5	Silver anodized
G04037.03.02	1770 - 2150mm (70" to 84.5")	1000/1010mm	3	Dark Bronze anodized
G04037.04.02	1920 - 2400mm (76 to 94.5")	1000/1010mm	4	Dark Bronze anodized
G04037.05.02	2401 - 2750mm (94.5" to 108")	1000/1010mm	5	Dark Bronze anodized

AGB Lift Slide Gear Extensions

Item #	Description	Finish
G04401.01.01	Extension with lock point 500mm (19.5")	Silver anodized
G04401.01.02	Extension with lock point 500mm (19.5")	Dark Bronze anodized
G04401.02.01	Cover extension (no lock point) 1000mm (39")	Silver anodized
G04401.02.02	Cover extension (no lock point) 1000mm (39")	Dark Bronze anodized

Gas Spring Kit

Adds lift assist to gear on heavy panels, recommended to use with handles having spring-assist mechanism/positive stop action

Item #	Description
GMG702.04.00	Gas spring kit. For use with 200-400kg sashes



AGB XC WOOD LIFT SLIDE SYSTEM



Lock pin for wood



Double locking pin for ventilation

- For lift slide panels, use these four components all of the same brand
Carriages, Lock bolts, Gears and Link Rods
- 3 choices of lockbolt systems; basic, ventilation or coaxial with aluminum profile
- Activeage finish is salt-spray tested to 2000+ hours corrosion resistance
- Ask FFI for assistance for system for vinyl or metal panels

Lock Bolts

Item #	Description	Material	Finish
G40728.00.03	Lock pin for wood	Steel	Silver Activeage

Lock Bolts for Ventilation

Use with G40728.00.03 lock bolts on upper lock points,
and ventilation bolt at bottom lock point.

Item #	Description	Material	Finish
G04902.01.00	Double locking pin	Steel	Silver Activeage

Coaxial lock bolts with aluminum profile and caps

Use on inactive meeting sashes, up to 3 locking pins included

Item #	GR (size)	Length	Finish
G01361.03.01	3	2090mm	Silver Anodized
G01361.04.01	4	2340mm	Silver Anodized
G01361.03.02	3	2090mm	Dark Bronze Anodized
G01361.04.02	4	2340mm	Dark Bronze Anodized
G01361.05.02	5	2690mm	Dark Bronze Anodized

Extension for coaxial lock bolt profile

One additional locking pin included

Item #	Length	Finish
G01361.97.01	500mm	Silver Anodized
G01361.97.02	500mm	Dark Bronze Anodized
G01757.00.01	1000mm	Silver Anodized
G01757.00.02	1000mm	Dark Bronze Anodized

Lock bolt holder profile

Used on jamb if wood locking profile is not used, lock bolts for wood not included

Item #	GR (size)	Length	Sash Height	Finish
G01341.01.01	1	2900mm (114")	1700-2900mm (69.7" to 114")	Silver Anodized
G01341.02.01	2	2900mm (114")	2401-2900mm (94.5" to 114")	Silver Anodized
G01341.01.02	1	2900mm (114")	1700-2900mm (69.7" to 114")	Dark Bronze Anodized
G01341.02.02	2	2900mm (114")	2401-2900mm (94.5" to 114")	Dark Bronze Anodized

Use GR 1: For gears GR 3-4, Use GR 2: For gears GR 5



G01361.XX.XX



G01341.XX.XX



Dark Bronze Aluminum



Clear anodized (silver) Aluminum



Plain unfinished (mill) Brass



Dark Bronze (shown with end cap)

FFI HIGH PROFILE BOTTOM TRACK

The most popular bottom track, the high-bottom track provides more weather protection than the standard low profile track.

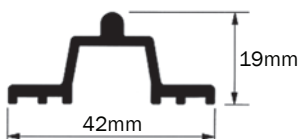
- High profile track provides more weather protection than low profile track
- Track has 5mm diameter, adapts to almost any arrangement
- Track is pre-drilled for screws at 12" intervals
- FFI aluminum track is Made-in-USA and Class I anodized for 3,000 hour salt-spray corrosion resistance per ASTM B117-07
- Ask FFI for technical details

Aluminum High Bottom Track

G00739.165.01D	13'9" (4191mm)	Aluminum	Silver (clear) anodized
G00739.165.02D	13'9" (4191mm)	Aluminum	Dark Bronze (Black) anodized
G00739.244.01D	20'4" (6197mm)	Aluminum	Silver (clear) anodized
G00739.244.02D	20'4" (6197mm)	Aluminum	Dark Bronze (Black) anodized

Brass High Bottom Track

G00739.03.03	19'8" (6000mm)	Brass	Unfinished (mill)
---------------------	----------------	-------	-------------------



Track Accessories

LSBTC00101	End cap for high bottom track	Nylon	Black
-------------------	-------------------------------	-------	-------

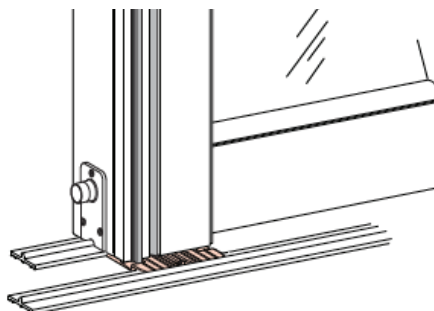
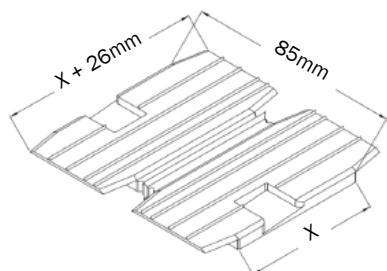


UNIVERSAL BOTTOM SEALING PAD

For use with Low or High bottom tracks and all interlock types.

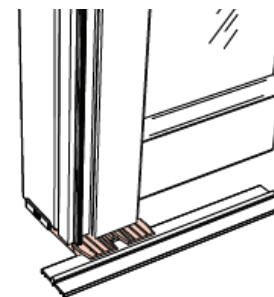
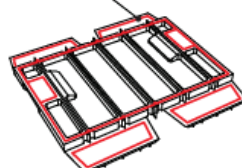
Universal Bottom Sealing Pad

G01400.06.93	X = 54mm
G01400.07.93	X = 64mm
G01400.08.93	X = 78mm
G0028B.00.93	X = 54mm Angled Bottom



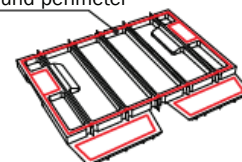
Silicone bead around perimeter

XX



Silicone bead around perimeter

OX





Dark Bronze Aluminum



Clear anodized (silver) Aluminum

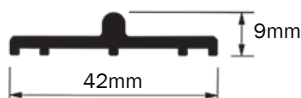
FFI LOW PROFILE BOTTOM TRACK

Low-profile track, for minimal visual and physical interruption in the floor transition.

- Track has 5mm diameter, adapts to almost any arrangement
- Track is pre-drilled for screws at 12" intervals
- FFI aluminum track is Made-in-USA, Class I anodized for high durability and lower corrosion risk
- Ask FFI for technical details

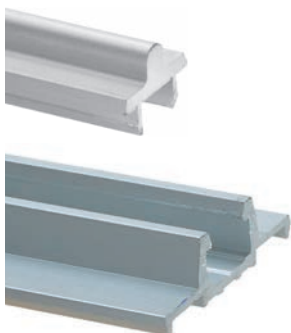
Aluminum Low Bottom Track

G00738.165.01D	13'9" (4191mm)	Aluminum	Silver (clear) anodized
G00738.165.02D	13'9" (4191mm)	Aluminum	Dark Bronze (Black) anodized
G00738.244.01D	20'4" (6197mm)	Aluminum	Silver (clear) anodized
G00738.244.02D	20'4" (6197mm)	Aluminum	Dark Bronze (Black) anodized

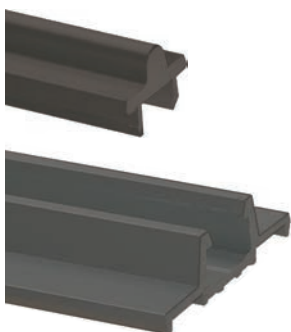


Track Accessories

G01611.00.00	Anti-Derailer block for low-bottom track	Zamack with activage finish	Silver
G01611.SL.00	Anti-Derailer block for UltraVue carriages	Zamack with activage finish	Silver



Silver (clear anodized) Aluminum



Dark Bronze Aluminum

C-STYLE BOTTOM TRACK HIGH PROFILE 2-PART

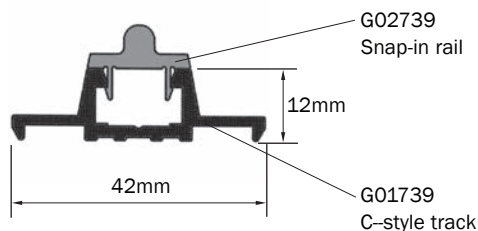
- High profile track provides more weather protection than low-profile track
- 5mm diameter snap-in track, adapts to almost any arrangement
- Screws are hidden under the removable/replaceable track insert
- Bottom footing of track can be recessed into floor
- Aluminum finished with Class II anodizing
- Ask FFI for technical details

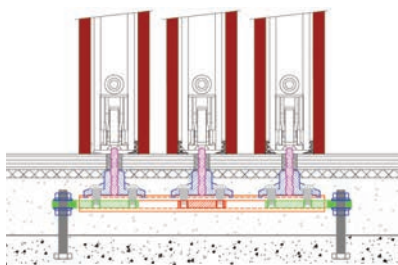
Aluminum Insert for track - Use with G01739 C-style track & G01741 threshold

G02739.04.01	6 meter (19'8")	Aluminum	Silver (clear) anodized
G02739.04.02	6 meter (19'8")	Aluminum	Dark Bronze (Black) anodized

C-style aluminum bottom track - Order with G02739 insert

G01739.04.01	6 meter (19'8")	Aluminum	Silver (clear) anodized
G01739.04.02	6 meter (19'8")	Aluminum	Dark Bronze (Black) anodized





FFI FASTRACK SYSTEMS

FASTrack (Functional Adjustable System Track) for multiple sliding doors

Advantages

- Fast and easy installation of multiple sliding door floor tracks.
- Adapts to variable field conditions using modular parts.
- Adjustable track spacing, adjustable height.
- A complete modular multi-track system, available in 8, 12 and 20 foot lengths.

Characteristics

- Compatible with any door manufacturer panels; any weight capacity.
- Two-sided track blades: 5mm diameter for lift slide, 6mm diameter for patio door rollers.
- FASTrack is a low-profile track; use with FFI Anti-Derailer lock for performance and hurricane testing.
- Curved track installation is simple: the track bends by hand.
- Surface drainage: FASTrack can be assembled on slope up to 2 degrees for surface drainage; sub-floor drainage system is not supplied.
- One-year FFI warranty against manufacturing defects, on all components.
- Stainless steel & brass: 15-year warranty against corrosion failure.
- Choice of corrosion resistant SST/brass or Class I anodized aluminum systems; do not mix system parts.

SST/Brass System



FASTrack Stainless Steel (SST) & Brass System

SL400.96.2B	Blade	8' (2438mm)	SST 304 grade	
SL400.144.2B	Blade	12' (3657mm)	SST 304 grade	
SL400.240.2B	Blade	20' (6096mm)	SST 304 grade	
SL404.96.721	Bridge	8' (2438mm)	Brass	Plain (mill finish)
SL404.BC20.721	Bridge clips	20 pack	Brass	Plain (mill finish)
SL404.TC50.721	Track clips	50 pack	Brass	Plain (mill finish)
SL404.NP10.721	Nut plate connector	10 pack	Brass	Plain (mill finish)

Aluminum System



FASTrack Aluminum Class I Anodized System

SL400.144.01	Blade	144" length	Aluminum	Clear (Silver)
SL400.144.710				Dark Bronze (Black)
SL400.252.01	Blade	252" length	Aluminum	Clear (Silver)
SL400.252.710				Dark Bronze (Black)
SL401.96.01	Bridge	8' length	Aluminum	Clear (Silver)
SL400.BCA.10	Bridge Clip Assembly		Pre-assembled Bridge Clip assembly	
SL400.TCA.10	Track Clip Assembly		Pre-assembled Track Clip assembly	



Shown with Interlock Drainage Kit



New self-tapping stainless steel fittings can be installed quickly using SL406.DB.03 drill bit.



Hose fittings can be placed according to application.



New Pre-assembled Bridge-Clip assembly (left) and Track-Clip assembly (right) attach faster and easier.

FFI FASTRACK DRAINAGE SYSTEM

FASTrack (Functional Adjustable System Track) for multiple sliding doors, with drainage to divert water from door openings.

Advantages

- Fast and easy installation of multiple sliding door floor tracks
- Adjustable track spacing and adjustable height for laser level installations
- Faster installation than ever, thanks to pre-assembled bridge-clips, pre-assembled track-clips, and self-tapping stainless steel drainage tube fitting and custom drill bit

Characteristics

- Compatible with any door manufacturer panels up to any weight capacity
- Can be configured for pocket door and corner applications
- 5mm diameter for lift slide door rollers
- FASTrack is a low-profile track; use with FFI Anti-Derailer lock for performance and hurricane testing
- Multiple bottom and side ports for 1/2" ID tubing for fast drainage
- Reticulated foam filter keeps debris out of drainage lines
- Optional Interlock Drainage Kit available
- Corrosion resistant Class I anodized aluminum system

FASTrack Drainage System - Aluminum

SL406.252.01	Drain channel infill	252" length	Clear (Silver)
SL406.252.710			Dark Bronze (Black)
SL408.144.628	Track blade/drain	144" length	Clear (Silver)
SL408.144.710			Dark Bronze (Black)
SL408.252.628	Track blade/drain	252" length	Clear (Silver)
SL408.252.710			Dark Bronze (Black)
SL401.96.01	FASTrack Bridge	8' length	Aluminum

Connectors, Clips and Accessories

SL406.FOAM.02	UV-protected debris filter	118" length	Foam
SL406.FT.10	Drain hose connector	1/2" ID tube, 1/4 NPT. 10-pack	Nylon Black
SL406.FT.11	Elbow drain hose connector	1/2" ID tube, 1/4 NPT. 10-pack	Nylon Black
SL407.DR.050	1/2" ID Drain hose	50' roll	Vinyl
SL406.FT.14	T-type fitting	1/2" ID, 10-pack	Polypropylene
SL406.FT.13	Elbow fitting	1/2" ID, 10-pack	Polypropylene
DP001.10	Straight fitting	1/2" ID, 10-pack	SST 304
SL406.PLUG.10	Drain insert/plug	10-pack	
SL400.BCA.10	Bridge Clip Assembly		Aluminum
SL408.TCA.10	Track Clip Assembly		Aluminum
G00760.00.04	Fixed panel support	118" length	Plastic
G00760.00.00	Fixed panel support end cap		Plastic

Tools - For FASTrack Drainage or Interlock Drainage Kit

SL406.TP.01	Tap - 1/4-18 NPT for Polypropylene
SL406.DB.02	Drill Bit. 7/16" steel 118 degree point for Polypropylene
SL406.DB.03	Carbide 2-step drill bit for SST 304 fitting

FFI INTERLOCK DRAINAGE KIT

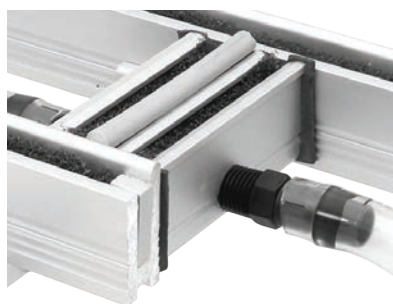
Interlock Drainage Kit for single or multi-panel lift slide doors.
A flexible solution to water diversion from your door opening.

Features

- Fast and easy installation of multiple sliding door floor tracks
- Provides both interior and exterior drainage
- Durable and corrosion resistant Class I anodized aluminum extrusion
- Multiple output ports for ½" ID tubing for fast drainage
- Reticulated foam filter keeps debris out of drainage lines
- For use with FFI FASTrack systems
- Compatible with many in-floor track systems and interlocks
- Bottom and side ports for ½" ID tubing for fast drainage



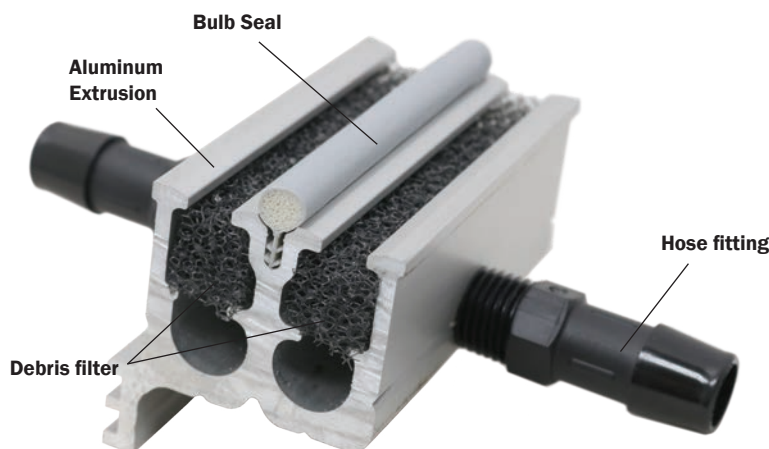
Interlock Drainage Kit shown with FASTrack Drainage System (Dark Bronze finish)



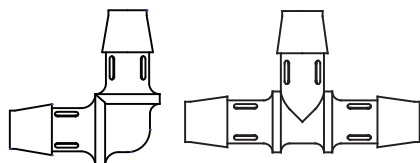
Interlock Drainage Kit offers drainage for both interior and exterior

Interlock Drainage System

SL405.02.KIT	Interlock Drainage Kit, Clear (Silver)	36" cuttable length
SL405.07.KIT	Interlock Drainage Kit, Dark Bronze (Black)	36" cuttable length



SL405.02.KIT



SL406.FT.13

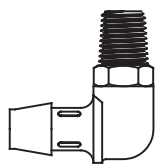
SL406.FT.14



SL406.FT.12



SL406.FT.10



SL406.FT.11

Tubing, connectors and replacement parts sold separately

SL407.DR.050	Clear tubing	50ft roll
SL406.FT.13	Elbow fitting	10 pack
SL406.FT.14	Tee fitting	10 pack
SL405.36.SEAL	Bulb Seal, Grey	36" length
SL405.36.SEAL.B	Bulb Seal, Black	36" length
SL405.04.SEAL	End Gasket	Strip of 12
SL405.01.FOAM	Debris filter	72" length



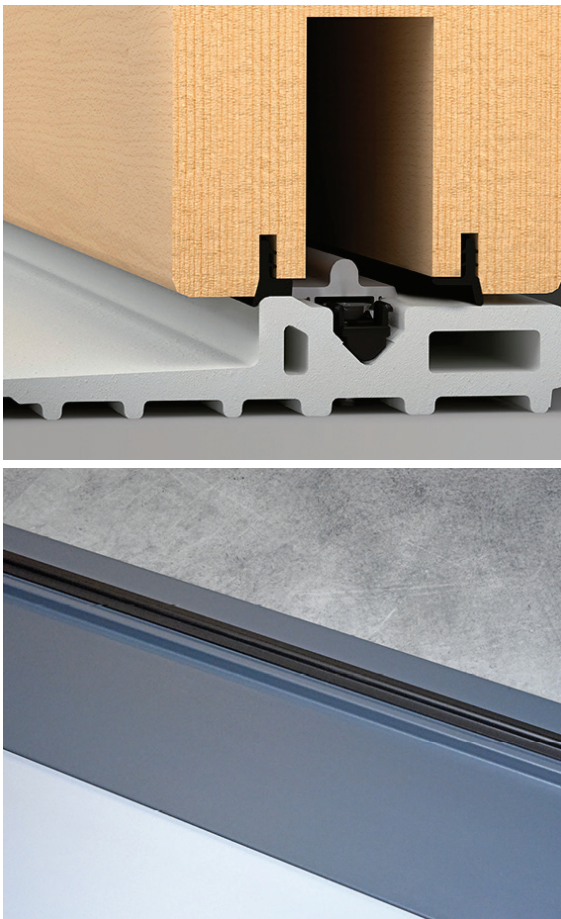
Part # SL405.36.SEAL
Bulb Seal (36" length)



Part # SL405.01.FOAM
Debris filter (72" length)



Part # SL407.DR.050
½"ID Clear Tubing (50ft roll)



CLIMATECH THRESHOLD SYSTEM

Climatech threshold is made of durable composite material, fiberglass-reinforced to ensure optimal strength, thermal resistance, excellent insulation and scratch resistance.

Features

- 3 threshold widths to accommodate 68mm, 78mm and 92mm panel thicknesses.
- 6 meter standard lengths.
- Track has 5mm diameter
- Supports both sliding panel and fixed sashes.
- Threshold available in Anthracite Grey RAL 7016 (stock) or Grey RAL 7035 (special order).
- Features central point pad between central profile and threshold for increased heat/cold insulation.
- Use appropriate safety equipment when cutting fiberglass-reinforced material.
- Add welded gaskets to seal sash to threshold.
- Cap & Accessory kit required (sold separately).

Climatech Threshold kits - Cap & Accessory kit required

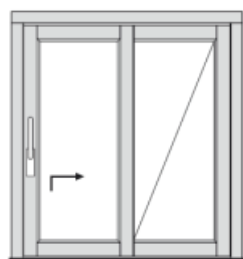
Threshold	For Panel Thickness	Length	Width	Color
G02268.04.87	68mm	6 meter (19'8")	164mm width	Anthracite Grey RAL 7016
G02278.04.87	78mm	6 meter (19'8")	184mm width	Anthracite Grey RAL 7016
G02292.04.87	92mm	6 meter (19'8")	212mm width	Anthracite Grey RAL 7016
G02268.04.86	68mm	6 meter (19'8")	164mm width	Grey RAL 7035
G02278.04.86	78mm	6 meter (19'8")	184mm width	Grey RAL 7035
G02292.04.86	92mm	6 meter (19'8")	212mm width	Grey RAL 7035

CLIMATECH THRESHOLD CAP & ACCESSORY KITS

Cap & Accessory Kits - Required for Climatech threshold system. Includes bottom sealing pad, clips, profile end caps, meeting caps for sliding profile and mounting clips.

Part #	For Panel Thickness	Layout*	Handing	Material	Color
G0020B.DX.93	68mm	XX	Right-Hand	Composite	Black
G0020B.SX.93	68mm	XX	Left-Hand	Composite	Black
G0021B.DX.93	78mm	XX	Right-Hand	Composite	Black
G0021B.SX.93	78mm	XX	Left-Hand	Composite	Black
G0023B.DX.93	92mm	XX	Right-Hand	Composite	Black
G0023B.SX.93	92mm	XX	Left-Hand	Composite	Black
G0020F.00.93	68mm	XXXX	Non-Handed	Composite	Black
G0021F.00.93	78mm	XXXX	Non-Handed	Composite	Black
G0023F.00.93	92mm	XXXX	Non-Handed	Composite	Black
G0020A.DX.93	68mm	OX	Right-Hand	Composite	Black
G0020A.SX.93	68mm	XO	Left-Hand	Composite	Black
G0021A.DX.93	78mm	OX	Right-Hand	Composite	Black
G0021A.SX.93	78mm	XO	Left-Hand	Composite	Black
G0023A.DX.93	92mm	OX	Right-Hand	Composite	Black
G0023A.SX.93	92mm	XO	Left-Hand	Composite	Black
G0020E.00.93	68mm	OXXO	Non-Handed	Composite	Black
G0021E.00.93	78mm	OXXO	Non-Handed	Composite	Black
G0023E.00.93	92mm	OXXO	Non-Handed	Composite	Black

Left Hand



Viewed from inside



Layout A (XO)
1 Sliding sash, 1 Fixed sash

Right Hand



Viewed from inside



Layout A (OX)
1 Sliding sash, 1 Fixed sash

CLIMATECH THRESHOLD COMPONENTS

Climatech Thermal profile

Profile	For Panel Thickness	Length	Color
G01310.04.93	68mm	3 meter (9'10")	Black
G01311.04.93	78mm	3 meter (9'10")	Black
G01312.04.93	92mm	3 meter (9'10")	Black

Climatech Threshold components

G01302.04.93	Fixed sash support profile	3 meter (9'10")	Black
G0028B.00.93	Bottom pad and cap kit Layouts B/F (XX/XXXX)	10mm gap only	

Sliding sash rail kit - Required for XX and XXXX layouts

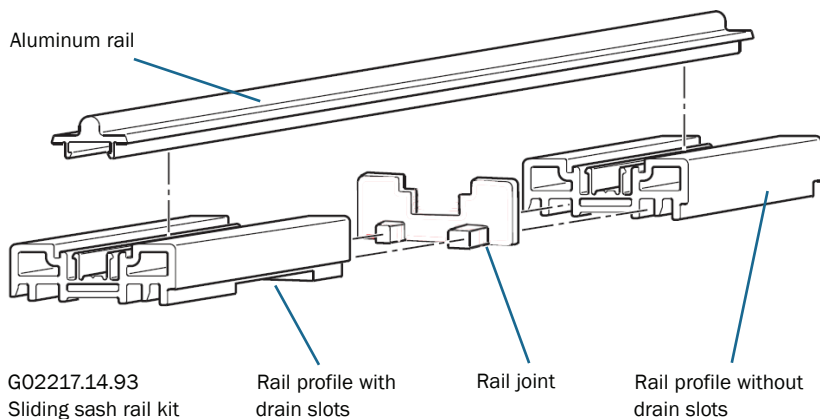
G02217.14.93	Accessory kit for sliding sash installations
	<ul style="list-style-type: none"> • 6 meter (19'8") aluminum rail • 3 meter (9'10") rail support profile without drain slots • 3 meter (9'10") rail support profile with drain slots



G01310.04.93
Thermal profile



G01302.04.93
Fixed sash support profile



G02217.14.93
Sliding sash rail kit

Rail profile with
drain slots

Rail joint

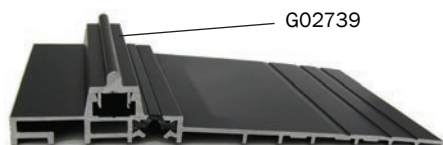
Rail profile without
drain slots



Central point pad
Included with Cap & Accessory kit



Climatech threshold shown in Grey RAL 7035 (special order)



G02739

G01741.04.01

THRESHOLD WITH THERMAL BREAK

Low profile threshold with high bottom track and thermal break for weather protection.

- Track has 5mm diameter, adapts to almost any arrangement
- Not used with pocketing layouts
- Also use with G02739 insert, and secondary panel bottom track G01743, which also uses G02739 insert
- Aluminum finished with Class II anodizing
- Ask FFI for technical details
- Insert hides screws and is replaceable in case of damage

Aluminum thermal break threshold - Also order and use with insert G02739

G01741.04.01	6 meter (19'8")	Aluminum	Silver (clear) anodized
G01741.04.02	6 meter (19'8")	Aluminum	Dark Bronze (Black) anodized

Aluminum top insert - Snaps into G01741 thermal break threshold or G01743 secondary threshold; screws are hidden underneath

G02739.04.01	6 meter (19'8")	Aluminum	Silver (clear) anodized
G02739.04.02	6 meter (19'8")	Aluminum	Dark Bronze (Black) anodized

Secondary threshold track - For a second sliding sash on low-threshold G01741; also order and use with snap-in insert G02739

G01743.04.01	6 meter (19'8")	Aluminum	Silver (clear) anodized
G01743.04.02	6 meter (19'8")	Aluminum	Dark Bronze (Black) anodized

Fixed panel support profile - For a second fixed sash to use on G01741 threshold

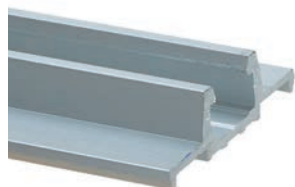
G01742.04.00	3 meter (9'10")	PVC plastic	Black
---------------------	-----------------	-------------	-------



G02739.04.01



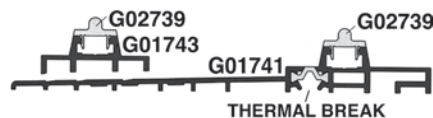
G02739.04.02



G01743.04.01

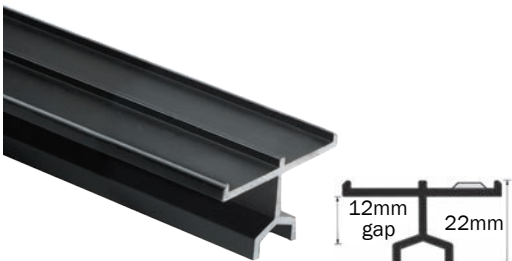


G01742.04.00



Low profile threshold accessories - For use with G01741 threshold

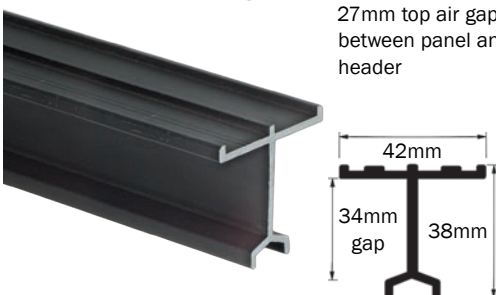
G01728.00.22	sealing pad for G01741	56mm (2 ³ / ₁₆ ") length	Rubber	Black
G01728.00.21	sealing pad for G01741	68mm (2 ¹¹ / ₁₆ ") length	Rubber	Black
G00728.01.31	End cap for support profile, use with G01742		Plastic	Black



12mm top air gap
between panel and
header



27mm top air gap
between panel and
header



Universal Heavy
Duty Top Track



G00728.00.04
Use instead of
coping the jamb stop.

FFI UNIVERSAL TOP TRACK

FFI aluminum tracks are Made-in-America with Class I anodized finish and a 1-year warranty against corrosion failure.

Features

- Use for any layout, number of panels, or door thickness.
- 12mm top air gap between panel and header.
- Track is pre-drilled for screws at 12" intervals
- FFI universal low profile track is the easiest to install for pocket applications.
- If combining with high bottom track, see installation instructions for details.
- FFI aluminum track is Made-in-USA and Class I anodized for 3,000 hour salt-spray corrosion resistance per ASTM B117-07

FFI Universal Low Profile Class I anodized top track (UL)

G01734.165.01D	13'9" (4191mm)	Aluminum	Silver (clear) anodized
G01734.165.02D	13'9" (4191mm)	Aluminum	Dark Bronze (Black) anodized
G01734.244.01D	20'4" (6197mm)	Aluminum	Silver (clear) anodized
G01734.244.02D	20'4" (6197mm)	Aluminum	Dark Bronze (Black) anodized

FFI Universal Standard Class I anodized profile top track (US)

G00734.165.01D	13'9" (4191mm)	Aluminum	Silver (clear) anodized
G00734.165.02D	13'9" (4191mm)	Aluminum	Dark Bronze (Black) anodized
G00734.244.01D	20'4" (6197mm)	Aluminum	Silver (clear) anodized
G00734.244.02D	20'4" (6197mm)	Aluminum	Dark Bronze (Black) anodized

FFI Universal Heavy Duty Class I anodized profile top track (HD)

LSTTHD.244.710	20'4" (6197mm)	Aluminum	Dark Bronze (Black) anodized
-----------------------	----------------	----------	------------------------------

Anti-lifting screw for US top tracks - Screw into track for enhanced security

G40728.00.20	Anti-lift (anti-burglary) screw	Steel	silver corrosion resistant
---------------------	---------------------------------	-------	----------------------------



Universal top track accessories

G00728.00.04	End cap for Universal Standard and Universal Low Profile top track Not for Heavy Duty top track	Rubber	Black
LSFTG00000	Top guide front terminal	Plastic	Black
LSRTG00106	Top rear track cap with tongue and bumper.	Plastic/rubber	Black
LSRTG00009	Top rear track cap with tongue (no bumper).	Plastic/rubber	Black

Top front
track terminal



LSFTG00000

Top rear track cap
with tongue. Used
for reducing panel
vibrations and
enhanced security.



LSRTG00106



LSRTG00009

C-STYLE TOP TRACK

European style aluminum track, Class II anodized finish.

Features

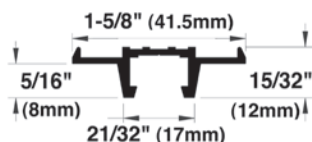
- Use for: Any type of door arrangement, with any number of sliding panels or thicknesses.
- 12mm top air gap between panel and header (same as UL track).
- Clean look; minimal track protrusion.
- G01739 can also be used for 2-part bottom track.
- Easy panel installation, especially with high bottom track.
- Useful for curved lift slide applications.
- When C-style is used with pocket applications, specialized milling is needed. See installation guide.
- C-style track is European made, with Class II anodizing.

Low profile top track (C-style)

G01739.04.01	6 meter (19'8")	Aluminum	Silver (clear) anodized
G01739.04.02	6 meter (19'8")	Aluminum	Dark Bronze (Black) anodized

Seals for C-style top track

G00733.07.01	Top seal for C-style track - Order 1 meter for each meter of track
G00756.00.93	Top insulation strip for C-style track Use with metal panel interlock



Required Items

- C-Style top track
- Top seal G00733.07.01
- Accessory kit G00758.02.68



G00733.07.01



G00756.00.93

Accessory kit for C-style top track - Order 1 accessory kit for each sliding (x) panel

G00758.02.68	Accessory kit for C-style track contains <ul style="list-style-type: none"> • Top front shaped cap • Top front guide (adjustable) • Top rear guide with rubber bumper (adjustable)
---------------------	---



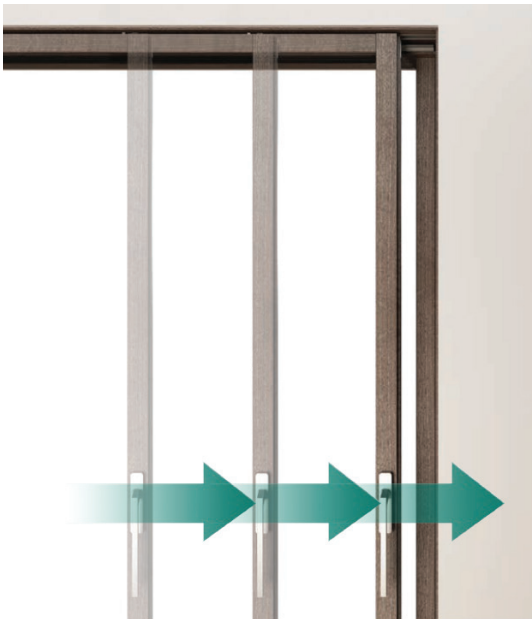
Top front cap



Top front guide



Top rear guide



AGB AUTO BRAKE SYSTEM

The Auto Brake system slows down and stops the sash before it reaches the frame, ensuring comfort and safety.

Features

- Use with U-shaped top track with 22x22mm channel
- Gliders & Caps Kit for embedded upper guide
- Front and rear kits
- For opening and closing on the same sash
- Compatible with any brand of lift slide gear

Auto Brake Damper Kit

G00232.11.93	Closing Brake	80-200kg	Black Finish
G00232.12.93		201-440kg	
G00232.13.93	Opening Brake	80-200kg	Black Finish
G00232.14.93		201-440kg	

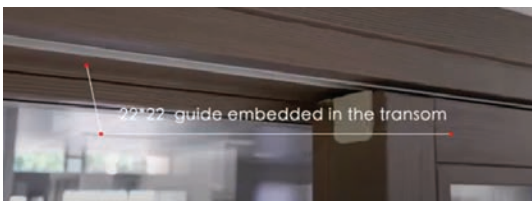
Gliders and Caps kits for embedded upper guide 22mm x 22mm

G00232.21.93	Front Glider	Black Finish
G00232.20.93	Rear Glider	Black Finish

* Using the opening and closing brake on the same sash, the minimum Sash Rebate Width is 1100mm (43.3")

Profiles

G02403.15.01	Top locking profile	1500mm	Silver Finish
G02403.20.01	For Wood systems	2000mm	Silver Finish
G02403.30.01		3000mm	Silver Finish
G02406.15.01	50mm upper locking profile	1500mm	Silver Finish
G02406.20.01	For Wood/Aluminum systems	2000mm	Silver Finish
G02406.30.01		3000mm	Silver Finish



Embedded Upper Track Guide		Finish
G01002.01.01	Track 3000mm	Silver
G01002.02.01	Track 4000mm	Silver
G01002.03.01	Track 5000mm	Silver
G01002.04.01	Track 6000mm	Silver
G01002.01.02	Track 3000mm	Black
G01002.02.02	Track 4000mm	Black
G01002.03.02	Track 5000mm	Black
G01002.04.02	Track 6000mm	Black

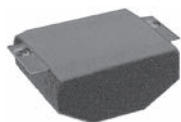
GASKETS, WEATHERSEAL AND ACCESSORIES



LSGK.TUP.150



LSGK.BTP.150



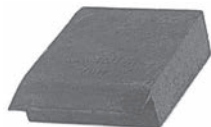
G00728.00.30



G00728.12.15



G00728.00.24



G00728.00.22

FFI Top Universal gasketing - compatible with universal top tracks (UL or US).

Flexible seal, for oil or water-based paints

LSGK.TUP.150	Top seal for universal top track	45 meter (150')	PVC	Black
LSGK.TUP.500	Top seal for universal top track	152 meter (500')	PVC	Black

LSGK.TUP seal is for Universal top track – If you are using C-style top track, see C-style top seal on page A-27 (G00733.07.01).

FFI bottom/side gasketing - Flexible seal, for oil or water-based paints (150 or 500ft per box)

LSGK.BTP.150	Bottom/side seal for lift slide	45 meter (150')	PVC	Black
LSGK.BTP.500	Bottom/side seal for lift slide	152 meter (500')	PVC	Black

Top insulating strips - optional seal for Universal top track

G00728.00.30	Seal for 56mm panels	For US track	Foam	Grey
G00728.00.15	Seal for 68mm panels	For US track	Foam	Grey
G00728.12.15	Seal for top panel	For UL track	Brush	Black

Bottom insulation strip - installs between bottom track and multiple panels

G00728.00.24	Seal for high bottom track	Rubber	Black
---------------------	----------------------------	--------	-------

Bottom insulation strip - for standard threshold bottom track

G00728.00.22	Seal for 56mm (2¼") panels	Rubber	Black
G00728.00.21	Seal for 68mm (2¾") panels	Rubber	Black

Panel accessories

G00204.00.93	Door bumper	Plastic/Rubber	Black
G00728.00.23	Corner frame link kit		



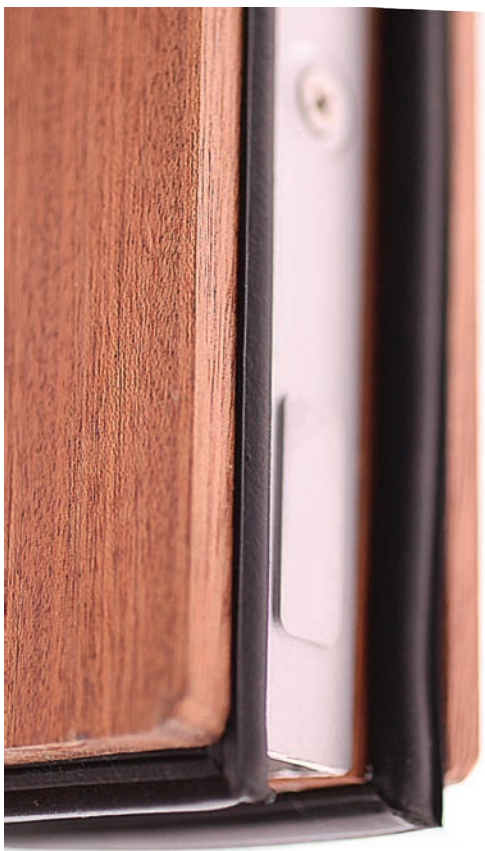
G00204.00.93 Door bumper

- Prevents fixed handles or double handles from bumping into one another.
- Prevents fixed handles or double handles from bumping into packet jamb.
- Used when moving panels are not as wide as the fixed panels.
- Used when multiple panels on parallel tracks overlap each other.



G00728.00.23

Corner frame link kit. Connects head (top rail) and side (stile) jambs. Allows easier transport of large frames for job site assembly.



GASKET WITH WELDED CORNER

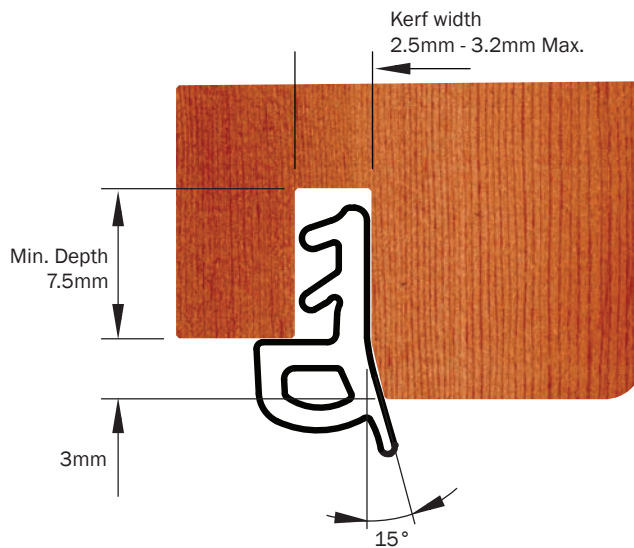
Thermal-resistant gasket with welded corner to ensure proper weathersealing.

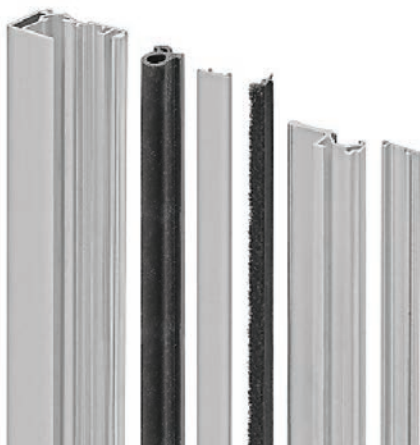
Features

- For lift slide door applications.
- Recommended as a bottom and side panel seal for lift slide doors.
- Each gasket kit includes left and right handed gasket.
- No need for notched gaskets (no corner cutting by hand)

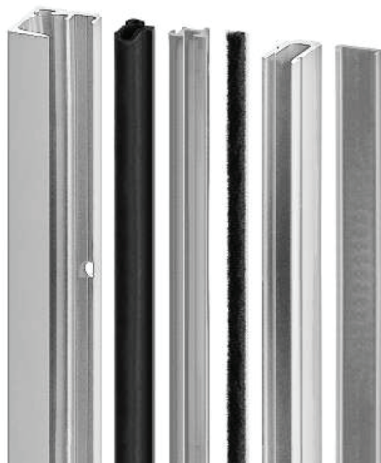
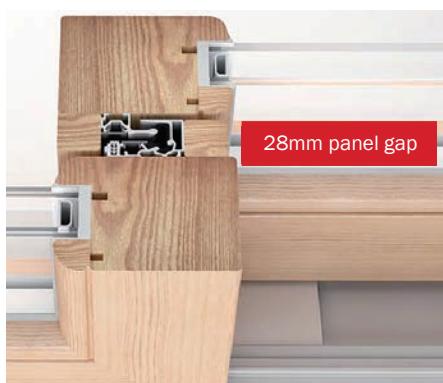
Welded corner gasket

G02000.13.93	3 meter x 3 meter (9'10" x 9'10")	Rubber	Black
G02000.15.93	4 meter x 4 meter (13'1½" x 13'1½")	Rubber	Black





Clear anodized (silver) shown



UNI-V: A BETTER INTERLOCK FOR SLIDING DOORS

An engineered, high performance solution for sliding panels.

- Easy panel alignment with wide milling tolerances
- For sliding panels with 1½" (28mm) panel gap
- Full panel height provides additional strength between panels for hurricane testing
- Saves assembly time with simple installation, comes predrilled for 3.5 x 30mm (#6 x 1¼") screws (not included)
- Eliminates contact points between the sash and frame for silent operation
- Kit includes EPDM bulb gasket, brush seal and two aluminum profiles, one for each panel
- Includes screw cover to conceal screws for a clean look
- Aluminum finished with Class II anodizing
- Ask FFI for technical details
- 28mm nominal gap with +2/-3mm lateral and +/-3mm "in-out" adjustment

UNI-V STANDARD CENTRAL POINT INTERLOCK

Uni-V central point kit - Use one per pair of panels

G02208.31.01	3100mm (122")	Aluminum	Silver (clear) anodized
G02208.40.01	4000mm (157½")	Aluminum	Silver (clear) anodized
G02208.31.93	3100mm (122")	Aluminum	Black anodized
G02208.40.93	4000mm (157½")	Aluminum	Black anodized

Accessories

G01610.DX.93	Right hand cap kit
G01610.SX.93	Left hand cap kit



UNI-V MINI CENTRAL POINT INTERLOCK

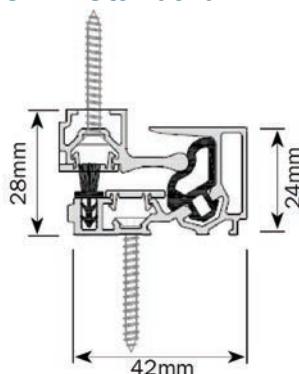
Uni-V Mini central point kit - Use one per pair of panels

G02211.31.01	3100mm (122")	Aluminum	Silver (clear) anodized
G02211.40.01	4000mm (157½")	Aluminum	Silver (clear) anodized
G02211.31.93	3100mm (122")	Aluminum	Black anodized
G02211.40.93	4000mm (157½")	Aluminum	Black anodized

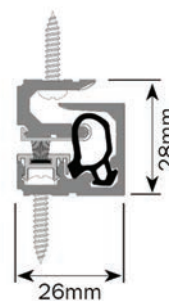
Accessories

G01623.DX.93	Right hand cap kit
G01623.SX.93	Left hand cap kit

Uni-V Standard 42mm



Uni-V Mini 26mm





ACCESSORIES FOR WOOD INTERLOCK

Essentials for basic wood interlocking panels.

- Basic interlock components using brush (for decompression chamber) (available in pipe) and gasket material in 150 and 500 foot rolls
- For wood or aluminum clad wood panels with 28mm panel gap and 6mm air gap
- Ask FFI for technical details

Brush for decompression chamber

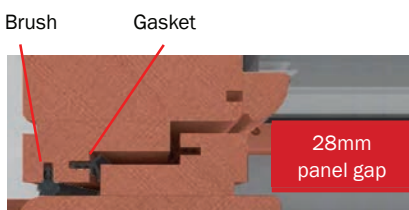
Use one per panel pair

G02002.31.00 3100mm (10' 2") Black

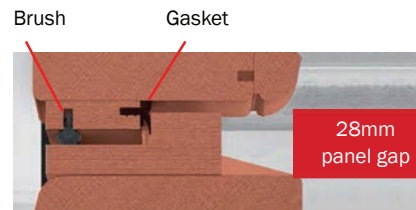
Gasket

LSGK.BTP.150 150' roll Black

LSGK.BTP.500 500' roll Black



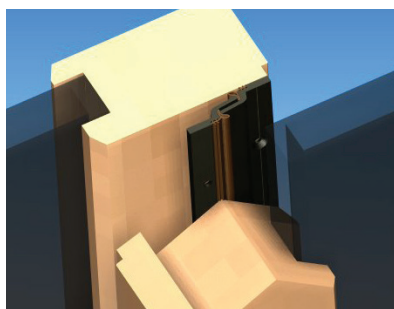
Basic Type Interlock



Easy Type Interlock



SL300.12.02 SL300.12.03 SL300.12.01



FFI PANEL INTERLOCKS

Durable brass or aluminum (Class I anodized) for long life corrosion resistance. 1-year warranty.

- Easy panel alignment - Handles minor misalignments
- For wood or aluminum clad wood panels with $\frac{1}{2}$ " - $\frac{9}{16}$ " (12 to 15mm) air gap
- Provides additional strength between panels for hurricane testing
- Saves assembly time with simple installation
- See data sheet or installation instructions for more information
- 2024 product stock being converted from pre-drilled to undrilled extrusions

Panel Interlock	Order two pieces to connect two panels			
SL300.12.01	12'	Pre-drilled*	Aluminum	Silver (clear) anodized
SL300.12.02	12'	undrilled	Aluminum	Dark Bronze (Black) anodized
SL300.12.03	12'	undrilled	Brass	Unfinished (mill)

* While stock remains

Screws	One screw recommended every three inches		
LVP 25S	#6, 3.5 x 25mm (1") flathead screw	Steel	Silver
LVP 25B	#6, 3.5 x 25mm (1") flathead screw	Steel	Black
LVP25SSST	#6, 3.5 x 25mm (1") flathead screw	SST	Silver
LVP25BSST	#6, 3.5 x 25mm (1") flathead screw	SST	Black



Interlock gasket	Universal for oil or water-based paint	
SLGK.02.024	24' length PVC gasket (connects 1 set of 2 panels)	Black
SLGK.02.750	750' roll PVC gasket (connects 31 sets of 62 panels)	Black



LAR300019
Stainless Steel / Delrin Wheels



Adjust the roller using a standard
M6 Allen Wrench

FFI TWIN ROLLER

430 stainless steel two-wheel rollers

- Lift Slide Applications: Use to place a screen on the outward track
- Other Applications: Multi-slide doors
- Compatible with any FFI lift slide track, including FASTrack
- Delrin wheels carry up to 660 lb doors maximum per door (using 2 rollers)
- Durable ball-bearings
- Height adjustment of up to 6mm (+/- 3mm) at each end of the door panel
- Easy installation
- Screws recommended: #8 Philips flat head, stainless steel, length and thread to suit material (not included)

FFI Twin Roller - Order 2 per door; use with 5mm diameter lift slide track

Part #	Casing	Wheel	Weight Capacity*
LAR3000019	430 Stainless Steel	Delrin	660 lbs

* Maximum door weight using two rollers

FFI 1-WHEEL ROLLER

304 stainless steel single-wheel rollers

- Lift Slide Applications: Use to place a screen on the outward track
- Other Applications: Multi-slide doors
- Compatible with any FFI lift slide track, including FASTrack
- Delrin wheels carry up to 220 lb maximum per door (using 2 rollers)
- Easy installation



LAR2500014
Stainless Steel / Delrin Wheels

FFI 1-Wheel Roller - Order 2 per door; use with 5mm Diameter lift slide track

Part #	Casing	Wheel	Weight Capacity*
LAR2500014	304 Stainless Steel	Delrin	220 lbs

* Maximum door weight using two rollers