

Patio & Multi-Slide Hardware & Track

Sliding Patio Door Hardware	Pages
Sliding Door Locks by Winkhaus	B-2
FFI Handles for Winkhaus Locks	B-3 to B-6
GreenteQ Clearslide System	B-7 to B-9
Multipoint Double-Hook Locks	B-10 to B-11
Touch Magnetic System	B-12 to B-13
Door Pulls	B-14
Patio Door Rollers, Anti-Derailer Lock	B-15
Low Profile Track	B-16
FFI FASTrack Systems	B-17 to B-18
FFI Interlock Drainage Kit	B-19
Panel Interlocks	B-20 to B-21

WINKHAUS SLIDER DOOR LOCKS AND HANDLES

FFI exclusively offers Winkhaus hardware in North America; this lock and handle system features high quality materials and function.

- Applications: all sash types (wood, clad, steel, aluminum, composite, PVC/vinyl)
- For interior or exterior doors; 1¾" (45mm) or 2¼" (57mm) thickness
- Stainless steel components include face-plate, hooks and strikes
- 90° cylinder thumbturn provides visual locking indicator
- Spring-loaded double hooks automatically latch behind strike plate
- Anti-slam feature prevents unintentional locking or damage during operation
- Hooks engage in opposing directions for security protection from lift-out
- Hooks are adjustable +/-2mm (in or out)
- Screws: purchase separately #7 or #8, 2 per lock, 4 per strike
- Winkhaus 2-year warranty against manufacturing defects
- A highly durable and reliable lock

Lock materials	Stainless steel face and hooks, galvanized steel body
Faceplate dimensions	20mm (¹³ / ₁₆ ") W, 370mm (14½") H, 2.5mm (¹ / ₈ ") thick
Spindle hub	Offset for 8mm square spindle
Lock backset	28mm (1⅛")
Lock Center	92mm (3⅝")



Slider lock with the new Miami handle

Slider lock - 304 grade stainless steel

2896437 Winkhaus Slider Door Lock

Strike plates - 304 grade stainless steel

2896445 Flat strike plate - For wood doors
1342942 U-Strike plate with 9mm return - For PVC or aluminum doors
1320480 U-Strike plate with 20mm return - For PVC or aluminum doors

Compatible with these handles - See following pages



2896445

1342942

1320480



Miami Series
Page B-4



Botticelli Series
Page B-5



Fontana Series
Page B-6



Miami

DOOR HANDLES FOR WINKHAUS SLIDER LOCK

High quality decorative door handle trim sets for Winkhaus Slider Lock.

- Ergonomic handle design avoids "knuckle busting"
- Escutcheon: 34mm (1 $\frac{3}{8}$ ") W x 222mm (8 $\frac{7}{8}$ ") L x 10.5mm ($\frac{3}{8}$ ") proud, arched ends
- Handles are sold in kits including: left-handed & right handed handles, spindle, allen wrench, gasket, screws, cylinder (when applicable) and instructions
- Choice of finishes varies by handle, see following pages
- Functions:
 - Keyed entry: full cylinder with key and thumb-turn knob
 - Patio function: half cylinder with thumb-turn knob only
 - Inactive function: blank (dummy) plates with no cylinder

Specifying your handle set

The following information is needed for a fast quote:

- Handle style**
- Handle finish**
- Function**
- Handing**
- Door thickness**

See next pages for part numbers, descriptions and details.



Botticelli

Eclipse™ 90° Cylinder features

- The Winkhaus Slider Lock requires a Eclipse™ 90° Cylinder. All handle sets include a cylinder as appropriate (with screw, collar, 2 keys & needle tool).
- Cylinder has 90° locking turn. Vertical position is unlocked, horizontal position is locked. (Cylinder knobs pictured are shown vertical, unlocked)
- Cylinders are "Schlage C" re-keyable. Keyed-alike cylinders are available.
- Cylinders are included in handle sets, see next pages for part codes.

Cylinders are for 2 $\frac{1}{4}$ " (57mm) or 1 $\frac{3}{4}$ " (45mm) thick doors, with lock centered in stile

35/30mm full cylinder	key + thumb-turn knob	for 2 $\frac{1}{4}$ " (57mm) doors
00/30mm half cylinder	thumb-turn knob only	for 2 $\frac{1}{4}$ " (57mm) doors
30/20mm full cylinder	key + thumb-turn knob	for 1 $\frac{3}{4}$ " (45mm) doors
00/20mm half cylinder	thumb-turn knob only	for 1 $\frac{3}{4}$ " (45mm) doors

Full (keyed) cylinder faces are in 3 finishes, included with handle sets:

Dark Bronze	For handles in Espresso 743, ORB 613, PDV bronze 739, black 622, 631
Bright Brass	For handles in antique brass 609, Polished brass 723 or 724
Nickel	For handles in Satin nickel 748, PVD Ultra steel 748, White 714



Fontana



MIAMI - BRASS DOOR HANDLE SETS FOR WINKHAUS SLIDER LOCK

Warranty: 5 Years against manufacturing defects. For PVD finishes (recommended for coastal applications):
Lifetime warranty (effectively 10 years) against corrosion failure.

These handles and cylinders are sold in kits, which include:

- Handle & plate sets (Left or right-handed)
- Cylinder (when applicable)
- Spindle
- Screws
- Foam gasket
- Allen wrench
- Instructions

Miami handles feature new easier assembly and PVD corrosion resistant finishes.

Handing (right or left) is which direction the door slides when viewed from the exterior.

Turn-piece & handle tolerances allow for minor discrepancies in alignment. Once installed, the handle assembly maintains a stable rigid operation.



Miami	Door Thickness	Cylinder	Handing	Flat Black 622	PVD Bright Brass 723	PVD Bronze 739	PVD Satin Nickel 748
Keyed	2¼"	35/30	Left	MI1065.KL.622	MI1065.KL.723	MI1065.KL.739	MI1065.KL.748
	1¾"	30/20	Left	MI3065.KL.622	MI3065.KL.723	MI3065.KL.739	MI3065.KL.748
Patio	2¼"	00/30	Left	MI1065.PL.622	MI1065.PL.723	MI1065.PL.739	MI1065.PL.748
	1¾"	00/20	Left	MI3065.PL.622	MI3065.PL.723	MI3065.PL.739	MI3065.PL.748
Inactive	2¼"	None	Left	MI1065.IL.622	MI1065.IL.723	MI1065.IL.739	MI1065.IL.748
	1¾"	None	Left	MI3065.IL.622	MI3065.IL.723	MI3065.IL.739	MI3065.IL.748
Keyed	2¼"	35/30	Right	MI1065.KR.622	MI1065.KR.723	MI1065.KR.739	MI1065.KR.748
	1¾"	30/20	Right	MI3065.KR.622	MI3065.KR.723	MI3065.KR.739	MI3065.KR.748
Patio	2¼"	00/30	Right	MI1065.PR.622	MI1065.PR.723	MI1065.PR.739	MI1065.PR.748
	1¾"	00/20	Right	MI3065.PR.622	MI3065.PR.723	MI3065.PR.739	MI3065.PR.748
Inactive	2¼"	None	Right	MI1065.IR.622	MI1065.IR.723	MI1065.IR.739	MI1065.IR.748
	1¾"	None	Right	MI3065.IR.622	MI3065.IR.723	MI3065.IR.739	MI3065.IR.748



Flat Black



PVD Bright Brass



PVD Bronze



PVD Satin Nickel

BOTTICELLI - BRASS DOOR HANDLE SETS FOR WINKHAUS SLIDER LOCK

Warranty: 5 Years against manufacturing defects. For PVD finishes (recommended for coastal applications):
Lifetime warranty (effectively 10 years) against corrosion failure.

These handles and cylinders are sold in kits, which include:

- Handle & plate sets (Left or right-handed)
- Cylinder (when applicable)
- Spindle
- Screws
- Foam gasket
- Allen wrench
- Instructions

Botticelli handles feature new easier assembly and PVD corrosion resistant finishes. Handing (right or left) is which direction the door slides when viewed from the exterior.
Botticelli handles feature new easier assembly.



Botticelli	Door Thickness	Cylinder	Handing	Antique Brass 609	Oil Rubbed Brass 613	Flat Black 622	PVD Bright Brass 723	PVD Bronze 739	PVD Satin Nickel 748
Keyed	2¼"	35/30	Left	B1065.KL.609	B1065.KL.613	B1065.KL.622	B1065.KL.723	B1065.KL.739	B1065.KL.748
	1¾"	30/20	Left	B3065.KL.609	B3065.KL.613	B3065.KL.622	B3065.KL.723	B3065.KL.739	B3065.KL.748
Patio	2¼"	00/30	Left	B1065.PL.609	B1065.PL.613	B1065.PL.622	B1065.PL.723	B1065.PL.739	B1065.PL.748
	1¾"	00/20	Left	B3065.PL.609	B3065.PL.613	B3065.PL.622	B3065.PL.723	B3065.PL.739	B3065.PL.748
Inactive	2¼"	None	Left	B1065.IL.609	B1065.IL.613	B1065.IL.622	B1065.IL.723	B1065.IL.739	B1065.IL.748
	1¾"	None	Left	B3065.IL.609	B3065.IL.613	B3065.IL.622	B3065.IL.723	B3065.IL.739	B3065.IL.748
Keyed	2¼"	35/30	Right	B1065.KR.609	B1065.KR.613	B1065.KR.622	B1065.KR.723	B1065.KR.739	B1065.KR.748
	1¾"	30/20	Right	B3065.KR.609	B3065.KR.613	B3065.KR.622	B3065.KR.723	B3065.KR.739	B3065.KR.748
Patio	2¼"	00/30	Right	B1065.PR.609	B1065.PR.613	B1065.PR.622	B1065.PR.723	B1065.PR.739	B1065.PR.748
	1¾"	00/20	Right	B3065.PR.609	B3065.PR.613	B3065.PR.622	B3065.PR.723	B3065.PR.739	B3065.PR.748
Inactive	2¼"	None	Right	B1065.IR.609	B1065.IR.613	B1065.IR.622	B1065.IR.723	B1065.IR.739	B1065.IR.748
	1¾"	None	Right	B3065.IR.609	B3065.IR.613	B3065.IR.622	B3065.IR.723	B3065.IR.739	B3065.IR.748



PVD Bronze



Oil Rubbed Brass



Flat Black



Antique Brass



PVD Satin Nickel



PVD Bright Brass

FONTANA BRASS DOOR HANDLE SETS FOR WINKHAUS SLIDER LOCK

Warranty: 5 Years against manufacturing defects. For PVD finishes (recommended for coastal applications):
Lifetime warranty (effectively 10 years) against corrosion failure.

These handles and cylinders are sold in kits, which include:

- Handle & plate sets (Left or right-handed)
- Cylinder (when applicable)
- Spindle
- Screws
- Foam gasket
- Allen wrench
- Instructions

Fontana handles feature new easier assembly and PVD corrosion resistant finishes. Handing (right or left) is which direction the door slides when viewed from the exterior.

Turn-piece & handle tolerances allow for minor discrepancies in alignment. Once installed, the handle assembly maintains a stable rigid operation.



Fontana	Door Thickness	Cylinder	Handing	Antique Brass 609	Oil Rubbed Brass 613	Flat Black 622	PVD Bright Brass 723	PVD Bronze 739	PVD Satin Nickel 748
Keyed	2¼"	35/30	Left	F1065.KL.609	F1065.KL.613	F1065.KL.622	F1065.KL.723	F1065.KL.739	F1065.KL.748
	1¾"	30/20	Left	F3065.KL.609	F3065.KL.613	F3065.KL.622	F3065.KL.723	F3065.KL.739	F3065.KL.748
Patio	2¼"	00/30	Left	F1065.PL.609	F1065.PL.613	F1065.PL.622	F1065.PL.723	F1065.PL.739	F1065.PL.748
	1¾"	00/20	Left	F3065.PL.609	F3065.PL.613	F3065.PL.622	F3065.PL.723	F3065.PL.739	F3065.PL.748
Inactive	2¼"	None	Left	F1065.IL.609	F1065.IL.613	F1065.IL.622	F1065.IL.723	F1065.IL.739	F1065.IL.748
	1¾"	None	Left	F3065.IL.609	F3065.IL.613	F3065.IL.622	F3065.IL.723	F3065.IL.739	F3065.IL.748
Keyed	2¼"	35/30	Right	F1065.KR.609	F1065.KR.613	F1065.KR.622	F1065.KR.723	F1065.KR.739	F1065.KR.748
	1¾"	30/20	Right	F3065.KR.609	F3065.KR.613	F3065.KR.622	F3065.KR.723	F3065.KR.739	F3065.KR.748
Patio	2¼"	00/30	Right	F1065.PR.609	F1065.PR.613	F1065.PR.622	F1065.PR.723	F1065.PR.739	F1065.PR.748
	1¾"	00/20	Right	F3065.PR.609	F3065.PR.613	F3065.PR.622	F3065.PR.723	F3065.PR.739	F3065.PR.748
Inactive	2¼"	None	Right	F1065.IR.609	F1065.IR.613	F1065.IR.622	F1065.IR.723	F1065.IR.739	F1065.IR.748
	1¾"	None	Right	F3065.IR.609	F3065.IR.613	F3065.IR.622	F3065.IR.723	F3065.IR.739	F3065.IR.748



Antique Brass



Oil Rubbed Brass



Flat Black



PVD Bright Brass



PVD Bronze



PVD Satin Nickel

GREENTEQ CLEARSLIDE SLIDING DOOR LOCK & HANDLES

FFI is the exclusive North American distributor for Greenteq hardware by VBH (GB) Ltd.

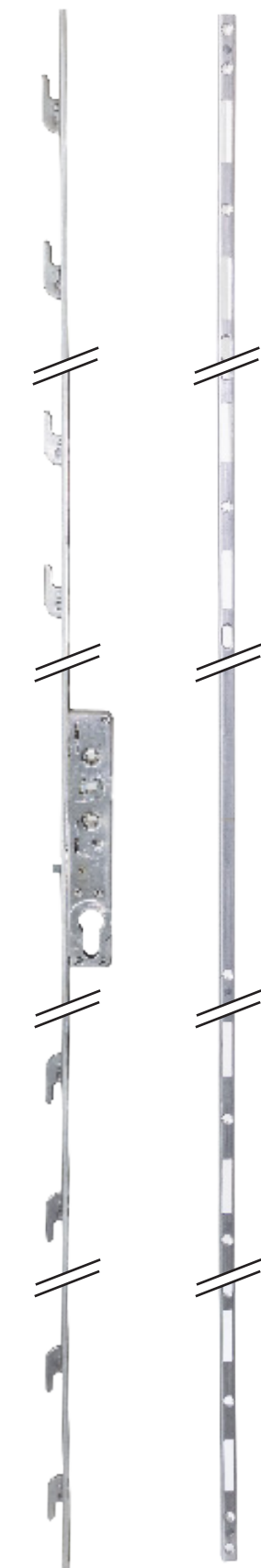
- Applications: Sliding, inline patio doors
- Compatible with: Wood and PVCu inline sashes (strikes available; ask for profile-related advice)
- Materials: 430 stainless steel lock face & strikes
- Warranty: 10 years
- Strike options: Can be used in any material
- Compatible with europrofile cylinders
- Compatible handles: Alpha Patio P-handles, Coastline stainless steel handles (or most any D-shaped patio handle with 7mm spindle)

Lock Characteristics

- 8 hook locking points (4 hook version also available)
- 2 anti-lift pins
- Lock face 1720mm x 16mm; square ends, u-channel shape
- Center 92mm
- Backset 20mm
- Mis-operation device included
- Corrosion testing: Standard 1670 Class 5 tested (480 hours)
- Tested to PAS24:2016

Clearslide Door Lock & Strikes

2QSD0001C	Clearslide 8-Point Patio Lock
2QSD0012C	Strike for wood sash or Deceuninck Striker 24/Rehau Agia profile, face 1758mm x 12mm
2QSD0013C	Strike for wood sash or Kommerling PremiLine profile, face 1758mm x 12mm
2QSD0015	Strike for PVCu or wood (1758mm x 16mm)
2QSD0016	Strike for PVCu or wood (1758mm x 16mm)



ALPHA PATIO DOOR HANDLES

FFI is the exclusive North American distributor for GreenteQ hardware by VBH (GB) Ltd.

- Applications: Sliding, inline patio doors
- Compatible with: GreenteQ Clearslide and Yale locks
- Door thickness: 40-70mm
- Reversible handing
- Available with profile cylinder hole or without (plain plate)
- Available with latching lever or without (pull only)
- Blank external backplate available (use when exterior pull handle is not needed)
- Warranty: 10 years



Part #	Type	Finish
2QHB2001	Handle & Plate with Lever & Cylinder hole	White RAL 9016
2QHB2002		Enduro Steel
2QHB2003		Antique Black
2QHB2004		Black RAL 9005
2QHB2005		PVD Gold
2QHB2006		Polished Chrome
2QHB2007		Satin Chrome
2QHB2008		Smokey Chrome
2QHB2009		Anthracite Grey RAL 7016
2QHB2021	Handle & Plate with Lever	White RAL 9016
2QHB2024		Black RAL 9005
2QHB2025		PVD Gold
2QHB2026		Polished Chrome
2QHB2027		Satin Chrome
2QHB2028		Smokey Chrome
2QHB2031	Handle & Plate (pull only)	White RAL 9016
2QHB2034		Black RAL 9005
2QHB2035		PVD Gold
2QHB2036		Polished Chrome
2QHB2037		Satin Chrome
2QHB2038		Smokey Chrome
2QHB2041	Blank Exterior Backplate (no pull handle)	White RAL 9016
2QHB2044		Black RAL 9005
2QHB2046		Polished Chrome
2QHB2047		Satin Chrome



Blank Backplates shown



COASTLINE PATIO DOOR HANDLES IN STAINLESS STEEL

FFI is the exclusive North American distributor for GreenteQ hardware by VBH (GB) Ltd.

- Applications: Sliding, inline patio doors
- Compatible with: GreenteQ Clearslide and Yale locks
- Door thickness: 42-71mm
- Reversible handing
- Available with profile cylinder hole or without (plain plate)
- Available with latching lever or without (pull only)
- Blank external backplate available (use when exterior pull handle is not needed)
- Warranty: 25 years

Part #	Type	Finish
2QHB2805	Handle & Plate with Lever & Cylinder hole	Stainless steel, PVD Gold
2QHB2807		Stainless steel, Polished
2QHB2809		Stainless steel, Brushed
2QHB2825	Handle & Plate with Lever	Stainless steel, PVD Gold
2QHB2827		Stainless steel, Polished
2QHB2829		Stainless steel, Brushed
2QHB2835	Handle & Plate (pull only)	Stainless steel, PVD Gold
2QHB2837		Stainless steel, Polished
2QHB2839		Stainless steel, Brushed
2QHB2845	Blank Exterior Backplate (no pull handle)	Stainless steel, PVD Gold
2QHB2847		Stainless steel, Polished
2QHB2849		Stainless steel, Brushed
2QHB0822	Spring Cassette for Coastline Lever Handle (Pair)	



Poseidon lever driven lock (50mm backset)

POSEIDON® UNITOP MULTIPOINT LOCKS

Patented Poseidon lock boxes have two opposing hooks that anchor the door in place and act in sync with deadbolt and latch.

- For wood, PVC, composite material or aluminum/wood doors
- All locking points are powered to provide superior alignment
- Pressed steel Poseidon hooks have 7mm holding power on the strike
- Fits standard North American door heights (80" or 96")
- Three extensions accommodate door heights up to 10'10"
- Extra Poseidon lock boxes can be added with extensions
- Many configuration options; removable faceplate
- Interface of lock with strike creates 1/4" or 5/16" gap between door and jamb; an astragal or weatherstrip will be needed to cover the gap
- ACTIVEAGE finish offers more than 2,000 hour salt fog corrosion resistance



W99800.00.15



W99800.00.16



W99620.08.13



W99620.08.17



W99630.00.13



W99622.08.57

Lock material	Steel, silver finish
Maximum height	2500mm (8' 2") using top terminal extension
Minimum height	1800mm (5' 11") by cutting lockface
Lock dimensions	16mm (5/8") W x 2400mm (94 1/2") H
Handle height	Set at 1050mm (41 5/16")
Maximum handle height	1150mm (45 5/16") with bottom terminal + extension
Minimum handle height	948mm (37 5/16") by cutting lock to lower overall height
Spindle	8mm (5/16") on the square; 92mm (3 3/4") centers
Adjustable strike	18 x 186 x 8.5mm (45 5/64" x 7 21/64" x 11/32")
Lock forend	Width: 16mm (5/8"), thickness: 3mm (1/8")
Backsets (Unitop)	25, 30, 35, 40, 45, 50, 55mm (some are special order)

Poseidon Unitop (lever driven) locks - Requires 3.5x30mm screws, not included

Part #	Description	Backset	Finish
W21220.45.13	Poseidon lever-driven lock	45mm	Silver
W21220.55.13	Poseidon lever-driven lock	50mm	Silver
A40486.00.02	Terminal for Poseidon (See Catalog D for more options)		

Poseidon Unitop extensions - Requires (5) 3.5x30mm screws, not included

Part #	Description	Finish
W99800.00.15	Extension upper/lower with Poseidon box	Silver
W99800.00.16	Extension upper/lower without Poseidon box	Silver

Adjustable strikes - Requires (4) 4x30mm screws, not included

Part #	Description		Air Gap	Finish
W99610.05.13	Timber U-18 strike		12mm	Silver
W99610.01.13	Timber U-18 strike		4mm	Silver
W99630.00.13	PVC U-30 strike	Non-handed	4mm	Silver
W99620.08.13	Adjustable pocket strike		Flush	Silver
W99620.08.58	Fixed strike for 2¼" door	Non-handed	Flush	Silver
W99621.08.57	Fixed strike for 2¼" door	Right-handed	Flush	Silver
W99622.08.57	Fixed strike for 2¼" door	Left-handed	Flush	Silver
W99621.08.45	Fixed strike for 1¾" door	Right-handed	Flush	Silver
W99622.08.45	Fixed strike for 1¾" door	Left-handed	Flush	



A40486.00.01

Shootbolt Terminals for Poseidon Locks

Part#	Length	Throw	Faceplate	Position
A40486.00.01	180mm	15mm	16mm	Upper
A40486.00.02	120mm	15mm	16mm	Lower
W01690.00.01*	130mm	20mm	16mm	Both

*Recommended for hurricane testing.

HANDLES FOR POSEIDON MULTIPOINT LOCKS

See Decorative Hardware catalog for full product offering



Tokyo

Material	Stainless Steel 304
Handing	Left or Right
Cylinder Cutout	Available
Finish	Satin Silver Flat Black Split Finishes available



Sunrise

Material	Stainless Steel 304
Handing	Left or Right
Cylinder Cutout	Available
Finish	Satin Silver Flat Black Oil-rubbed Bronze Split Finishes available



Crest

Material	Stainless Steel 304
Handing	Left or Right
Cylinder Cutout	Available
Finish	Satin Silver Flat Black Oil-rubbed Bronze Split Finishes available



Summer

Material	Stainless Steel 304
Handing	Left or Right
Cylinder Cutout	Available
Finish	Satin Silver Flat Black Split Finishes available



Opening a door with just a touch.

TOUCH® MAGNETIC CATCH FOR SCREEN & INTERIOR DOORS

Patented contactless adjustable magnetic door catch. Minimal design with no visible screws.

- For wood, PVC, composite material or aluminum/wood doors
- Catching force is adjustable to meet almost all applications
- Minimal design with no visible screws
- Adjustable magnets retract when door is opened

Material	Steel
Dimensions	18mm (¾") W x 196mm (7¾") H

Touch Catch

Part #	Finish
B01120.30.78	Grey
B01120.30.93	Black
B01120.30.FM	Matte White

Forend Cover for Touch

Part #	Finish
B01120.31.34	Matte Chromium Plated
B01120.31.93	Black
B01120.31.FM	Matte White

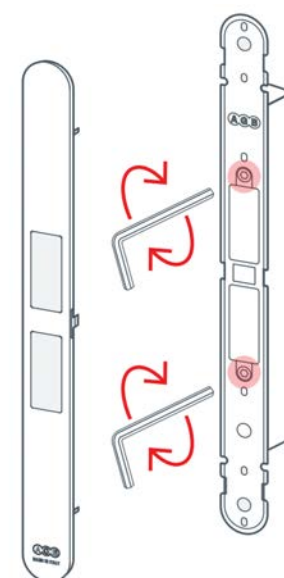
Strike for Touch - For Wood Frame

Part #	Finish
B02404.31.78	Grey
B02404.31.93	Black
B02404.31.FM	White

Strike for Touch - For Aluminum Frame

Part #	Finish
B02404.30.78	Grey
B02404.30.93	Black
B02404.30.FM	White

Adjustable open/closing force with included allen wrench.



Forend Cover

Touch Catch



B01120.31.34
Forend Cover
Matte Chromium

B01120.30.78
Touch Catch - Grey



B02404.30.78
Strike for
Aluminum
frame - Grey

B02404.31.78
Strike for
Wood frame -
Grey



TOUCH & CLOSE® MAGNETIC LOCK WITH CATCH

Patented contactless adjustable magnetic door catch. Minimal design with no visible screws.

- For wood, PVC, composite material or aluminum/wood doors
- Catching force is adjustable to meet almost all applications
- Minimal design with no visible screws
- Adjustable magnets retract when door is opened

Material	Steel
Dimensions	18mm (¾") W x 196mm (7¾") H

Touch & Close Lock

Part #	Description
B06502.50.93	50mm, WC, Black
B06503.50.93	50mm, Cylinder, Black

Forend Cover for Touch & Close

Part #	Finish
B01120.33.93	Black

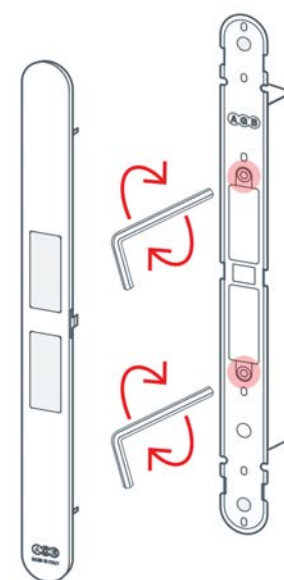
Strike for Touch - For Wood Frame

Part #	Finish
B02404.31.78	Grey
B02404.31.93	Black
B02404.31.FM	White

Strike for Touch - For Aluminum Frame

Part #	Finish
B02404.30.78	Grey
B02404.30.93	Black
B02404.30.FM	White

Adjustable open/closing force with included allen wrench.



Forend Cover

Touch Catch



B02404.30.78
Strike for
Aluminum
frame - Grey



B02404.31.78
Strike for
Wood frame -
Grey



LS400.03.630 LS400.03.731 LS400.03.743

CASCADE STAINLESS STEEL SHALLOW FLUSH PULL

Solid 304 grade stainless steel face mount door pulls for pocket doors & room dividers. Matches Cascade lift slide handle plates. Multiple finishes available.

- PVD protected 304 grade Stainless Steel
- Works with Cascade series lift slide handles
- Material: 304 grade stainless steel, Finish: satin
- Escutcheon: 3mm (1/8") thick
- Shallow pull dimensions: 2" (50mm) W x 7" (178mm) H 5/8" (16mm) D
- Routing depth: 13mm
- 4 Philips head stainless steel screws included

Item #	Material	Finish
LS400.03.630	SST 304	Satin Stainless (PVD protected)
LS400.03.731	SST 304	Satin Brass (PVD protected)
LS400.03.743	SST 304	Espresso (PVD protected)

Shallow Pulls



LS100.22.613 LS100.22.619 LS100.22.721

FFI SOLID BRASS FLUSH SLIDING DOOR PULLS

High quality solid brass door pulls for pocket doors & room dividers. Multiple styles and finishes available in both face mount and rear mount installations.

- Solid brass narrow profile construction, face mount or rear mount available
- Works with modern or classical designed projects
- Multiple finishes available including: Satin nickel, painted dark bronze, oil-rubbed bronze, polished brass or unfinished brass
- Dimensions: 1 7/16" (36mm) W x 5 1/8" (130mm) H x 3/8" (9.5mm) D
- Wood screws included with face mount pulls

Face Mount Pulls

Shallow pulls

LS100.22.619	Satin Nickel
LS100.22.690	Painted Dark Bronze
LS100.22.613	Oil-rubbed Bronze
LS100.22.721	Unfinished brass
LS100.22.605	Polished lacquered



LAR300019
Stainless Steel / Nylon Wheels



Adjust the roller using a standard
M6 Allen Wrench



LAR2500014
Stainless Steel / Nylon Wheels



FFI TWIN ROLLER

430 grade stainless steel two-wheel rollers

- Applications: Multi-slide doors
- Compatible with any FFI lift slide track, including FASTrack
- Delrin wheels carry up to 660 lb maximum per door (using 2 rollers)
- Durable ball-bearings
- Height adjustment of up to 6mm (+/- 3mm) at each end of the door panel
- Easy installation
- Screws recommended: #8 Philips flat head, stainless steel, length and thread to suit material (not included)

FFI Twin roller - Order 2 per door; use with 5mm diameter lift slide track

Part #	Casing	Wheel	Weight Capacity*
LAR3000019	430 Stainless Steel	Delrin	660 lbs

* Maximum door weight using two rollers

FFI 1-WHEEL ROLLER

304 grade stainless steel single-wheel roller

- Applications: Multi-slide doors
- Compatible with any FFI lift slide track, including FASTrack
- Nylon wheels carry up to 220 lb maximum per door (using 2 rollers)
- Easy installation

FFI 1-Wheel roller - Order 2 per door; use with 5mm diameter lift slide track

Part #	Casing	Wheel	Weight Capacity*
LAR2500014	304 Stainless Steel	Nylon	220 lbs

* Maximum door weight using two rollers

ANTI-DERAILER LOCK KIT - BOTTOM TRACK LOCK

Strength and security for sliding doors. Provides additional bottom track security locking point. Recommended for door performance certification testing with low profile track.

- Two click positions, 9/16" & 3/4" for variable sill depths
- Compatible with all LAR300 and LAR400 tandem carriages

Material	304 grade Stainless Steel	
Thickness	4mm (3/16")	
Track	FASTrack	FASTrack Drainage
Compatibility	Low Profile Bottom Track	Climatech Threshold

Item #	Description	Material
LLB.01.ASSM	Anti-derailer lock kit, 47mm H, 9/16" & 3/4" throw	SST 304
	- Lock mechanism	- Access Grommet
	- Climatech Shim	- Strike Keep/Screws
	- Mounting Screws	- Allen Wrench
	(Machine & wood type)	
LLB.01.DRL	Optional accessory to install Allen key access grommet	Steel
	Drill bit size M, 7.5mm diameter	



Dark Bronze Aluminum



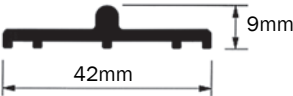
Clear anodized (silver) Aluminum

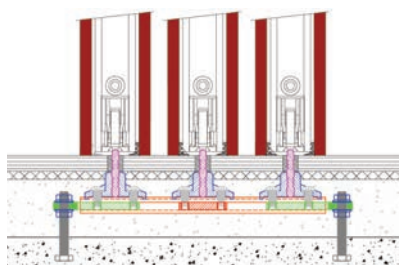
LOW PROFILE BOTTOM TRACK

Low-profile track, for minimal visual and physical interruption in the floor transition.

- Track has 5mm diameter, adapts to almost any arrangement
- FFI aluminum track is Made-in-USA, Class I anodized for high durability and lower corrosion risk
- Ask FFI for technical details

Aluminum Low Bottom Track			
G00738.165.01D	13'9" (4191mm)	Aluminum	Silver (clear) anodized
G00738.165.02D	13'9" (4191mm)	Aluminum	Dark Bronze (Black) anodized
G00738.244.01D	20'4" (6197mm)	Aluminum	Silver (clear) anodized
G00738.244.02D	20'4" (6197mm)	Aluminum	Dark Bronze (Black) anodized





SST/Brass System



Aluminum System



FFI FASTRACK SYSTEMS

FASTrack (Functional Adjustable System Track) for multiple sliding doors

Advantages

- Fast and easy installation of multiple sliding door floor tracks.
- Adapts to variable field conditions using modular parts.
- Adjustable track spacing, adjustable height.
- A complete modular multi-track system, available in 8, 12 and 20 foot lengths.

Characteristics

- Compatible with any door manufacturer panels; any weight capacity.
- Two-sided track blades: 5mm diameter for lift slide, 6mm diameter for patio door rollers.
- FASTrack is a low-profile track; use with FFI Anti-Derailer lock for performance and hurricane testing.
- Curved track installation is simple: the track bends by hand.
- Surface drainage: FASTrack can be assembled on slope up to 2 degrees for surface drainage; sub-floor drainage system is not supplied.
- One-year FFI warranty against manufacturing defects, on all components.
- Stainless steel & brass: 15-year warranty against corrosion failure.
- Choice of corrosion resistant SST/brass or Class I anodized aluminum systems; do not mix system parts.

FASTrack Stainless Steel (SST) & Brass System

SL400.96.2B	Blade	8' (2438mm)	SST 304 grade	
SL400.144.2B	Blade	12' (3657mm)	SST 304 grade	
SL400.240.2B	Blade	20' (6096mm)	SST 304 grade	
SL404.96.721	Bridge	8' (2438mm)	Brass	Plain (mill finish)
SL404.BC20.721	Bridge clips	20 pack	Brass	Plain (mill finish)
SL404.TC50.721	Track clips	50 pack	Brass	Plain (mill finish)
SL404.NP10.721	Nut plate connector	10 pack	Brass	Plain (mill finish)

FASTrack Aluminum Class I Anodized System

SL400.144.01	Blade	144" length	Aluminum	Clear (Silver)
SL400.144.710				Dark Bronze (Black)
SL400.252.01	Blade	252" length	Aluminum	Clear (Silver)
SL400.252.710				Dark Bronze (Black)
SL401.96.01	Bridge	8' length	Aluminum	Clear (Silver)
SL403-FCLIP25	Bridge clips	25 pack	Aluminum	Clear (Silver)
SL403-TCLIP50	Track clips	50 pack	Aluminum	Clear (Silver)

Connectors - For stainless steel and aluminum FASTrack systems

SLT-CSCREW50	Cap screws	50 pack	SST 304 grade	Polished
T-NUTSQ50	Square nuts	50 pack	Aluminum	Clear (Silver)
SLT-TBOLT25	Track bolts	25 pack	SST 304 grade	Polished



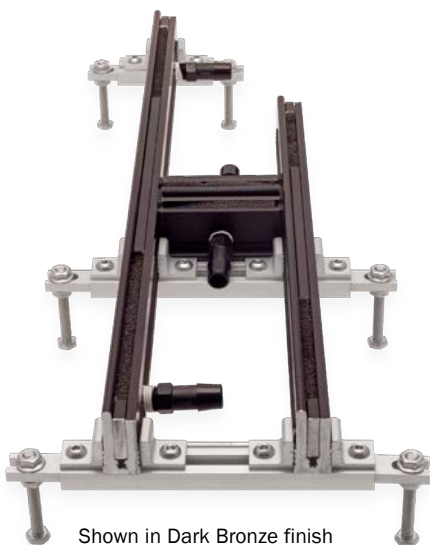
SLT-CSCREW50



T-NUTSQ50



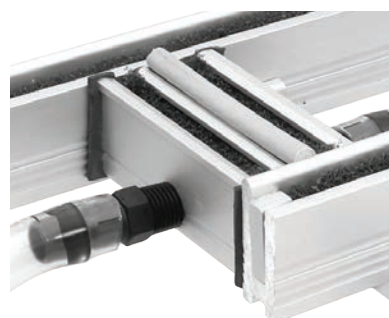
SLT-TBOLT25



Shown in Dark Bronze finish



Hose fittings can be placed according to application.



FASTrack Drainage shown with optional Interlock Drainage Kit

FFI FASTRACK DRAINAGE SYSTEM

FASTrack (Functional Adjustable System Track) for multiple sliding doors, with drainage to divert water from door openings.

Advantages

- Fast and easy installation of multiple sliding door floor tracks
- Adjustable track spacing and adjustable height for laser level installations

Characteristics

- Compatible with any door manufacturer panels up to any weight capacity
- Can be configured for pocket door and corner applications
- 5mm diameter for lift slide door rollers
- FASTrack is a low-profile track; use with FFI Anti-Derailer lock for performance and hurricane testing
- Multiple bottom and side ports for ½" ID tubing for fast drainage
- Reticulated foam filter keeps debris out of drainage lines
- Optional Interlock Drainage Kit available
- Corrosion resistant Class I anodized aluminum system

FASTrack Drainage System - Aluminum

SL406.252.01	Drain channel infill	252" length	Clear (Silver)
SL406.252.710			Dark Bronze (Black)
SL408.144.628	Track blade/drain	144" length	Clear (Silver)
SL408.144.710			Dark Bronze (Black)
SL408.252.628	Track blade/drain	252" length	Clear (Silver)
SL408.252.710			Dark Bronze (Black)
SL401.96.01	FASTrack Bridge	8' length	Aluminum

Connectors, Clips and Accessories

SL406.FOAM.01	Debris filter	118" length	Foam
SL406.FT.10	Drain hose connector	½" ID tube, ¼ NPT. 10-pack	Nylon Black
SL406.FT.11	Elbow drain hose connector	½" ID tube, ¼ NPT. 10-pack	Nylon Black
SL407.DR.050	½" ID Drain hose	50' roll	Vinyl
SL406.FT.14	T-type fitting	½" ID, 10-pack	Polypropylene
SL406.FT.13	Elbow fitting	½" ID, 10-pack	Polypropylene
SL406.FT.12	Straight fitting	½" ID, 10-pack	Polypropylene
SL406.PLUG.10	Drain insert/plug	10-pack	
SL403-FCLIP25	FASTrack Bridge clips	25-pack	Aluminum
SL403-TCLIP50	FASTrack clips	50-pack	Aluminum
G00760.00.04	Fixed panel support	118" length	Plastic
G00760.00.00	Fixed panel support end cap		Plastic
SLT-CSCREW50	Cap screws, SST 304	50-pack	Polished
T-NUTSQ50	Square nuts, Silver (clear) anodized	50-pack	Aluminum
SLT-TBOLT25	Track bolts, SST 304	25-pack	Polished

Tools - For FASTrack Drainage or Interlock Drainage Kit

SL406.TP.01	Tap - ¼-18 NPT
SL406.DB.02	Drill Bit. ⅞" steel 118 degree point

FFI INTERLOCK DRAINAGE KIT

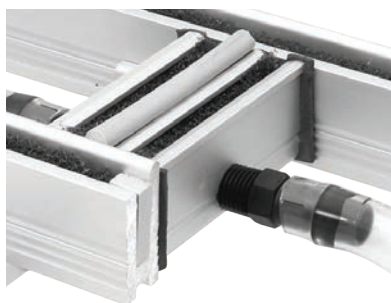
Patent Pending Interlock Drainage Kit for single or multi-panel lift slide doors.
A flexible solution to water diversion from your door opening.

Features

- Fast and easy installation of multiple sliding door floor tracks
- Provides both interior and exterior drainage
- Durable and corrosion resistant Class I anodized aluminum extrusion
- Multiple output ports for ½" ID tubing for fast drainage
- Reticulated foam filter keeps debris out of drainage lines
- For use with FFI FASTrack systems
- Compatible with many in-floor track systems and interlocks
- Bottom and side ports for ½" ID tubing for fast drainage



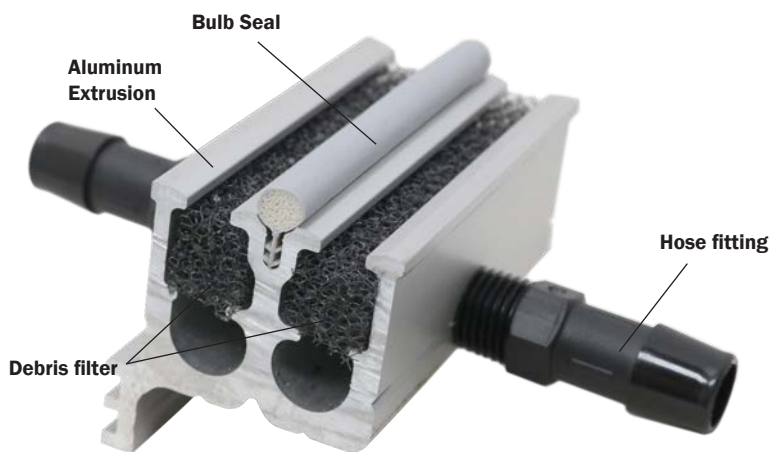
Interlock Drainage Kit shown with FASTrack Drainage System (Dark Bronze finish)



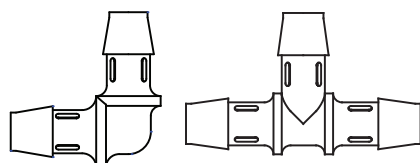
Interlock Drainage Kit offers drainage for both interior and exterior

Interlock Drainage System

SL405.02.KIT	Interlock Drainage Kit, Clear (Silver)	36" cuttable length
SL405.07.KIT	Interlock Drainage Kit, Dark Bronze (Black)	36" cuttable length



SL405.02.KIT



SL406.FT.13

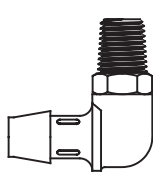
SL406.FT.14



SL406.FT.12



SL406.FT.10



SL406.FT.11

Tubing, connectors and replacement parts sold separately

SL407.DR.050	Clear tubing	50ft roll
SL406.FT.13	Elbow fitting	10 pack
SL406.FT.14	Tee fitting	10 pack
SL405.36.SEAL	Bulb Seal, Grey	36" length
SL405.36.SEAL.B	Bulb Seal, Black	36" length
SL405.04.SEAL	End Gasket	Strip of 12
SL405.01.FOAM	Debris filter	72" length



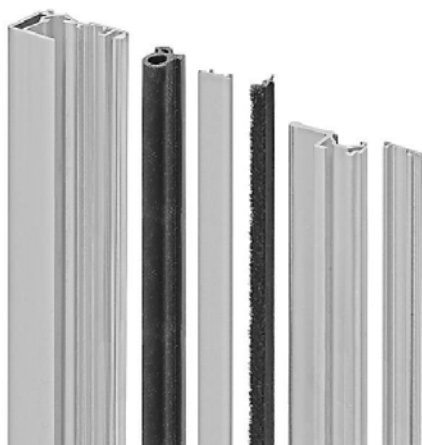
Part # SL405.36.SEAL
Bulb Seal (36" length)



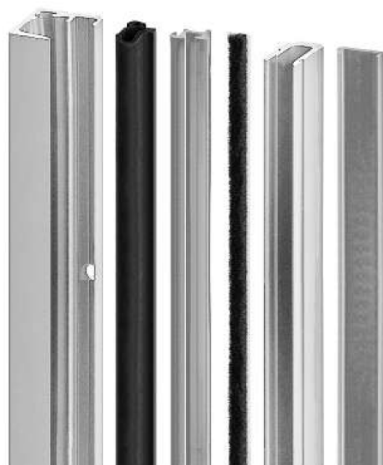
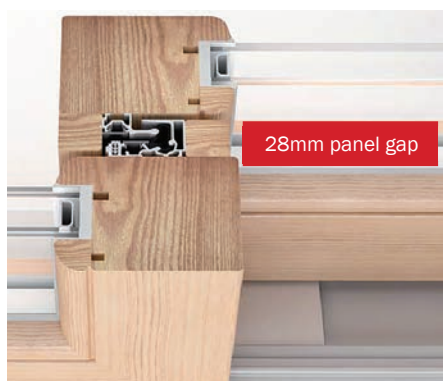
Part # SL405.01.FOAM
Debris filter (72" length)



Part # SL407.DR.050
½"ID Clear Tubing (50ft roll)



Clear anodized (silver) shown



UNI-V: A BETTER INTERLOCK FOR SLIDING DOORS

An engineered, high performance solution for sliding panels.

- Easy panel alignment with wide milling tolerances
- For sliding panels with 1½" (28mm) panel gap
- Full panel height provides additional strength between panels for hurricane testing
- Saves assembly time with simple installation, comes predrilled for 3.5 x 30mm (#6 x 1¼") screws (not included)
- Eliminates contact points between the sash and frame for silent operation
- Kit includes EPDM bulb gasket, brush seal and two aluminum profiles, one for each panel
- Includes screw cover to conceal screws for a clean look
- Aluminum finished with Class II anodizing
- Ask FFI for technical details
- 28mm nominal gap with +2/-3mm lateral and +/-3mm "in-out" adjustment

UNI-V STANDARD CENTRAL POINT INTERLOCK

Uni-V central point kit - Use one per pair of panels

G02208.31.01	3100mm (122")	Aluminum	Silver (clear) anodized
G02208.40.01	4000mm (157½")	Aluminum	Silver (clear) anodized
G02208.31.93	3100mm (122")	Aluminum	Black anodized
G02208.40.93	4000mm (157½")	Aluminum	Black anodized

Accessories

G01610.DX.93	Right hand cap kit
G01610.SX.93	Left hand cap kit



UNI-V MINI CENTRAL POINT INTERLOCK

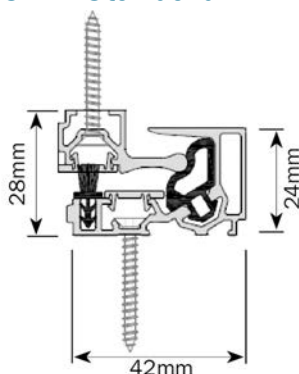
Uni-V Mini central point kit - Use one per pair of panels

G02211.31.01	3100mm (122")	Aluminum	Silver (clear) anodized
G02211.40.01	4000mm (157½")	Aluminum	Silver (clear) anodized
G02211.31.93	3100mm (122")	Aluminum	Black anodized
G02211.40.93	4000mm (157½")	Aluminum	Black anodized

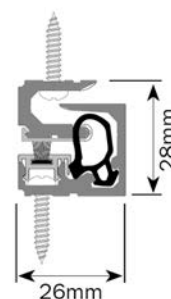
Accessories

G01623.DX.93	Right hand cap kit
G01623.SX.93	Left hand cap kit

Uni-V Standard 42mm



Uni-V Mini 26mm



ACCESSORIES FOR WOOD INTERLOCK

Essentials for basic wood interlocking panels.

- Basic interlock components using brush (for decompression chamber) (available in pipe) and gasket material in 150 and 500 foot rolls
- For wood or aluminum clad wood panels with 28mm panel gap and 6mm air gap
- Ask FFI for technical details

Brush for decompression chamber

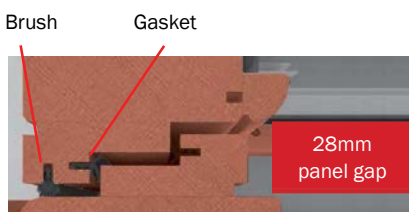
Use one per panel pair

G02002.31.00 3100mm (10' 2") Black

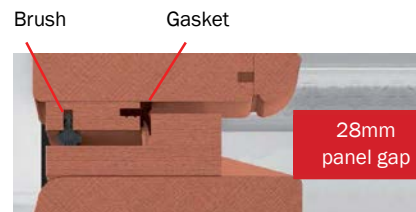
Gasket

LSGK.BTP.150 150' roll Black

LSGK.BTP.500 500' roll Black



Basic Type Interlock



Easy Type Interlock

FFI PANEL INTERLOCKS

Durable brass or aluminum (Class I anodized) for long life corrosion resistance. 1-year warranty.

- Easy panel alignment - Handles minor misalignments
- For wood or aluminum clad wood panels with $\frac{1}{2}$ " - $\frac{9}{16}$ " (12 to 15mm) air gap
- Provides additional strength between panels for hurricane testing
- Saves assembly time with simple installation
- See data sheet or installation instructions for more information
- 2024 product stock being converted from pre-drilled to undrilled extrusions

Panel Interlock	Order two pieces to connect two panels			
SL300.12.01	12'	Pre-drilled*	Aluminum	Silver (clear) anodized
SL300.12.02	12'	undrilled	Aluminum	Dark Bronze (Black) anodized
SL300.12.03	12'	undrilled	Brass	Unfinished (mill)

* While stock remains

Screws	One screw recommended every three inches			
LVP 25S	#6, 3.5 x 25mm (1") flathead screw	Steel	Silver	
LVP 25B	#6, 3.5 x 25mm (1") flathead screw	Steel	Black	
LVP25SSST	#6, 3.5 x 25mm (1") flathead screw	SST	Silver	
LVP25BSST	#6, 3.5 x 25mm (1") flathead screw	SST	Black	



Interlock gasket	Universal for oil or water-based paint		
SLGK.02.024	24' length PVC gasket (connects 1 set of 2 panels)	Black	
SLGK.02.750	750' roll PVC gasket (connects 31 sets of 62 panels)	Black	