

# Lift Slide Window Systems

FFI UltraVue for Windows	Pages
Overview of Models	E-2
FFI UltraVue Window Gears	E-3
FFI Signature Window Gears	E-4
FFI Gear Extensions	E-5
FFI UltraVue Carriages & Tandem Kit	E-6
FFI Link Rods	E-7
Guides for PVC, Metal Panels	E-8
FFI Lock bolts, Gear jig	E-9
Tracks & Guides	E-10 to E-13
Gaskets & Seals	E-14 to E-15
Panel Interlocks	E-16 to E-17
FFI SST Screen Rollers	E-18



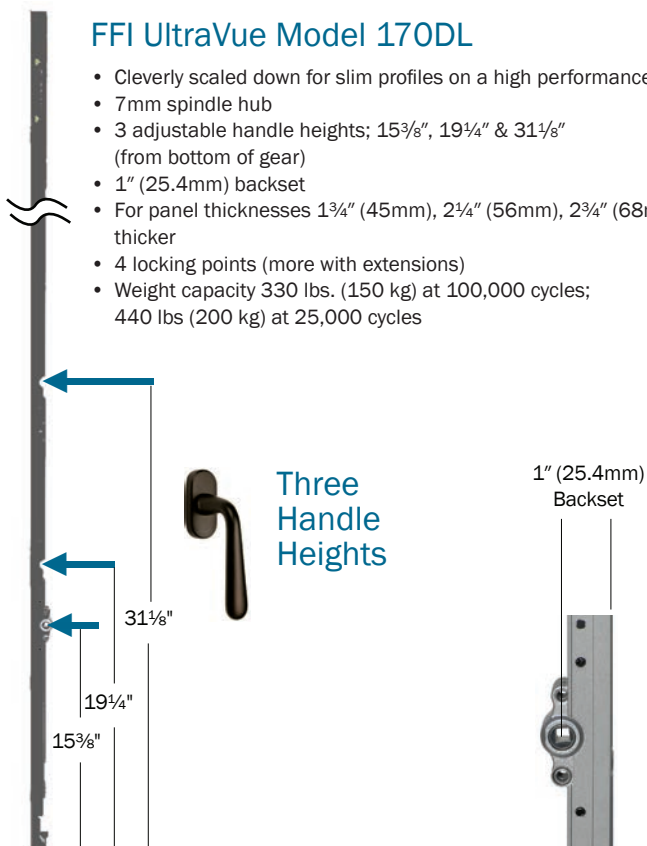


Versatile Wood Products

Lift slide windows are an elegant architectural solution for large openings, secure alignment, warp-prevention, and hurricane performance testing. Larger openings with more glass can earn LEED credits under Indoor Environmental Quality for Natural Ventilation, Daylighting, and Views. A lift slide window can deliver nearly the same view as a door, while avoiding door sill issues.

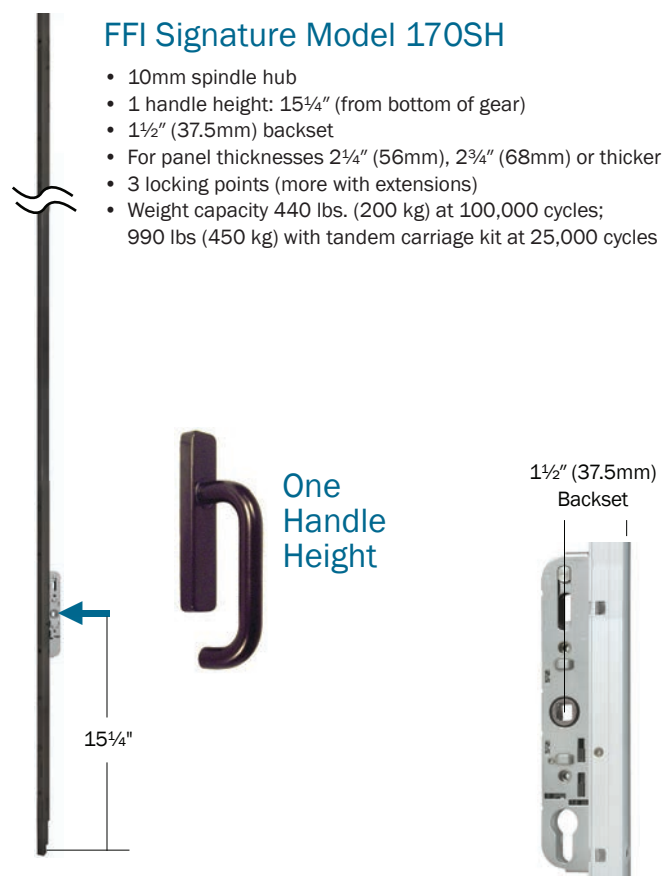
### FFI UltraVue Model 170DL

- Cleverly scaled down for slim profiles on a high performance window
- 7mm spindle hub
- 3 adjustable handle heights; 15 $\frac{3}{8}$ " , 19 $\frac{1}{4}$ " & 31 $\frac{1}{8}$ " (from bottom of gear)
- 1" (25.4mm) backset
- For panel thicknesses 1 $\frac{3}{4}$ " (45mm), 2 $\frac{1}{4}$ " (56mm), 2 $\frac{3}{4}$ " (68mm) or thicker
- 4 locking points (more with extensions)
- Weight capacity 330 lbs. (150 kg) at 100,000 cycles; 440 lbs (200 kg) at 25,000 cycles



### FFI Signature Model 170SH

- 10mm spindle hub
- 1 handle height: 15 $\frac{1}{4}$ " (from bottom of gear)
- 1 $\frac{1}{2}$ " (37.5mm) backset
- For panel thicknesses 2 $\frac{1}{4}$ " (56mm), 2 $\frac{3}{4}$ " (68mm) or thicker
- 3 locking points (more with extensions)
- Weight capacity 440 lbs. (200 kg) at 100,000 cycles; 990 lbs (450 kg) with tandem carriage kit at 25,000 cycles





## FFI 170DL ULTRAVUE LIFT SLIDE WINDOW GEARS

- Lift Slide Window Gears with 7mm spindle hub and adjustable handle height.
- For all sash types including wood, clad, steel, aluminum, composite and PVC.
- Same quality, materials and warranty as FFI Signature Series.

<b>Material</b>	304 grade Stainless Steel with SST/Brass lock parts
<b>Lock Face</b>	PVDF (Kynar)/Koflux coated anodized aluminum, Black or Silver
<b>Weight Capacity</b>	330 lbs. per panel at 100,000 cycles; 440 lbs. per panel at 25,000 cycles (ask for details)
<b>Backset</b>	25.4mm (1")
<b>Handle</b>	DK window handles with 7mm spindle
<b>Compatibility</b>	
<b>Locking Points</b>	Gear accepts up to 4 FFI lock bolts (and more lock points with extensions)
<b>Panel Height</b>	Up to 93.5" (2375mm) panels
<b>Gear Height</b>	66.9" (1700mm)
<b>Handle Height</b>	Configurable to 3 different handle heights Handle to bottom of gear: 15 <sup>3</sup> / <sub>8</sub> ", 19 <sup>1</sup> / <sub>4</sub> ", 31 <sup>1</sup> / <sub>8</sub> "
<b>Panel Thickness</b>	Minimum 1 <sup>3</sup> / <sub>4</sub> " for wood, other materials may vary
<b>Testing</b>	ASTM B-117 Salt Spray tested to 3,000 hours corrosion resistance AAMA 906-21 specification for Sliding Door and Lift Slide Roller Assemblies
<b>Carriage Compatibility</b>	Ultravue Carriages only, LAR2000A11 or LAR2000A14
<b>Warranty</b>	15 year warranty

## Lift Slide Window Gears

Includes carriage screws & caps - Available separately below

Item #	Backset	Material	Finish
<b>LAD170DL16</b>	25.4mm (1")	304 SST	Black
<b>LAD170DL17</b>	25.4mm (1")	304 SST	Silver

Items included with window gears - Available separately

Item #	Description	Material	Finish	Quantity
<b>LSBOLT0040</b>	Carriage screw, M5x13mm	SST	Black	1
<b>LLBCAP0001</b>	Lock bolt hole caps	Nylon	Black	5
<b>LSDGCAP0001</b>	Cylinder screw cap	Nylon	Black	1
<b>LSBOLT0030</b>	Carriage screw, M5x13mm	SST	Silver	1
<b>LLBCAP0000</b>	Lock bolt hole caps	Nylon	Grey	5
<b>LSDGCAP000</b>	Cylinder screw cap	Nylon	Grey	1

## LIFT SLIDE WINDOW HANDLES FOR 7MM SPINDLES

See Decorative Hardware catalog  
for full product offering



### Golia

Material: Brass  
Finish: Oil-rubbed bronze  
Matte Chrome  
Polished Lacquered Brass



### Ellisse

Material: Brass  
Finish: Painted Dark Bronze  
Oil-Rubbed Bronze  
Matte Nickel



### Ottawa

Material: Stainless Steel  
Finish: Satin

## Accessories

Sold separately - 6 screws required per window gear

Item #	Description	Material	Finish	Quantity
<b>LSBOLT1000-15</b>	Screws, 4.8x65mm (2-5/8")	SST	Black	15-pack
<b>LSBOLT2003-15</b>	Screws, 4.8x65mm (2-5/8")	SST	Silver	15-pack



## FFI 170SH SIGNATURE LIFT SLIDE WINDOW GEARS

- Lift Slide Window Gears with 10mm spindle hub
- For all sash types including wood, clad, steel, aluminum, composite and PVC

<b>Material</b>	304 grade Stainless Steel with SST/Brass lock parts
<b>Lock Face</b>	PVDF (Kynar)/Koflux coated anodized aluminum, Black or Silver
<b>Weight Capacity</b>	440 lbs. per panel at 100,000 cycles; 990 lbs. per panel with Signature and Tandem rollers at 25,000 cycles (ask for details)
<b>Backset</b>	37.5mm (1½")
<b>Handle Compatibility</b>	Lift Slide handles with 10mm spindle FFI edge pulls
<b>Locking Points</b>	Gear accepts up to 3 FFI lock bolts (and more with extensions)
<b>Panel Heights</b>	Up to 115" (2922 mm) panels
<b>Gear Height</b>	68.3" (1735.5mm)
<b>Handle Height</b>	15.6" (396.2mm) to 15.98" (406.2mm) depending on track (ask for details)
<b>Panel Thickness</b>	Minimum 56mm (2-1/4") for wood, other materials may vary
<b>Testing</b>	ASTM B-117 Salt Spray tested to 3,000 hours corrosion resistance AAMA 906-21 specification for Sliding Door and Lift Slide Roller Assemblies
<b>Carriage Compatibility</b>	Any FFI Lift Slide Carriages
<b>Warranty</b>	15 year warranty

## FFI Signature Lift Slide Window Gears

Includes carriage screw/cap - Available separately below

Item #	Backset	Material	Finish
<b>LAD170SH40</b>	37.5mm	304 SST	Black
<b>LAD170SH41</b>	37.5mm	304 SST	Silver

Items included with window gears - Available separately

Item #	Description	Material	Finish	Quantity
<b>LSBOLT0040</b>	Carriage screw, M5x13mm	SST	Black	1
<b>LLBCAP0001</b>	Lock bolt hole caps	Nylon	Black	5
<b>LSBOLT0030</b>	Carriage screw, M5x13mm	SST	Silver	1
<b>LLBCAP0000</b>	Lock bolt hole caps	Nylon	Grey	5

## LIFT SLIDE WINDOW HANDLES FOR 10MM SPINDLES

See Decorative Hardware catalog  
for full product offering



### AGB

Material: Aluminum  
Finish: Silver Anodized  
Dark Bronze Anodized

Material: Brass  
Finish: Polished Lacquered

## Accessories

Sold separately - 6 screws required per window gear

Item #	Description	Material	Finish	Quantity
<b>LSBOLT1000-15</b>	Screws, 4.8x65mm (2-5/8")	SST	Black	15-pack
<b>LSBOLT2003-15</b>	Screws, 4.8x65mm (2-5/8")	SST	Silver	15-pack



Strong gear extensions feature secure bolt-in rod.

## FFI GEAR EXTENSIONS WITH LOCK POINT

Cuttable gear extensions for any panel requiring additional height and locking point. Features threaded rod for far more reliability over set-screw style extensions.

<b>Material</b>	Drive rod: 304 grade Stainless Steel Face: Aluminum with heavy-duty PVDF (Kynar) finish
<b>Capacity</b>	Use with FFI lift slide systems from 330 to 880 lbs. (150 to 400kg) per panel
<b>Gear Height</b>	24" (625mm)
<b>Max. Height</b>	Up to 3 extensions can be used. Maximum door height is 14ft.
<b>Locking Point</b>	Adds 1 locking point
<b>Compatibility</b>	All FFI lift slide gears (door or window)

## Lift Slide Gear Extensions

Includes M6x18mm screw and connection bracket

Item #	Material	Finish
<b>LDG0625000</b>	304 SST	Black
<b>LDG0625001</b>	304 SST	Silver



Connection Bracket

## FFI COVER RAIL EXTENSIONS

A decorative blank cover plate, providing a neat appearance on intermediate (non-leading) panels that are taller than the lift slide door gear.

<b>Material</b>	Aluminum face
<b>Height</b>	24" (625mm), cuttable
<b>Compatibility</b>	All FFI lift slide gears (door or window)

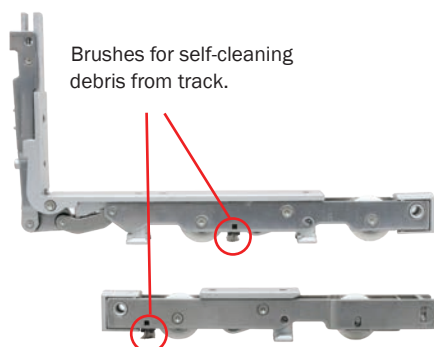
## Cover Rail Extensions

Includes M6x18mm screw and connection bracket

Item #	Material	Finish
<b>LSASH00008</b>	Aluminum	Black
<b>LSASH00009</b>	Aluminum	Silver

Included with cover rail extension - Available separately

Item #	Description
<b>LS00000197</b>	Connection bracket *Required when connecting cut extensions



## FFI ULTRAVUE LIFT SLIDE WINDOW CARRIAGES

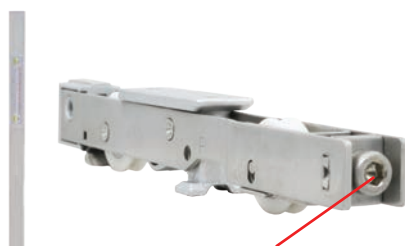
- For ultra slim profiles with maximum glass view
- For all sash types including wood, clad, steel, aluminum, composite and PVC.
- Same quality, materials and warranty as FFI Signature Series.

<b>Material Choice</b>	430 grade SST with chrome plated steel wheel bearings or Premium 304 grade SST with 630 series wheel bearings
<b>Characteristics</b>	PVDF (Kynar)/Koflux-coated zamak body Low friction Delrin wheels Nylon Brushes for self-cleaning debris from track
<b>Weight Capacity</b>	up to 660 lbs (300kg) per panel at 25,000 cycles (ask for details) (up to 990 lbs with Signature Gear and Tandem Kit, see below)
<b>Compatibility</b>	All FFI Lift Slide Window gears
<b>Panel Thickness</b>	Minimum 1¾" for wood, other materials may vary
<b>Track</b>	Compatible with 5mm diameter lift slide track
<b>Testing</b>	ASTM B-117 Salt Spray tested to 3,000 hours corrosion resistance AAMA 906-21 specification for Sliding Door and Lift Slide Roller Assemblies
<b>Warranty</b>	15 year warranty

## FFI UltraVue Carriage Assemblies

- Compatible with FFI Window Gears LAD170DL and LAD170SH
- Assemblies include carriages, 2 link rod pins, 4 screws 4.2 x 38mm (#10 x 1.5")

Item #	Description
<b>LAR2000A14</b>	304 SST UltraVue front + rear carriages
<b>LAR2000A11</b>	430 SST UltraVue front + rear carriages



The height-adjustable rear carriage makes it possible to lift the rear sliding sash up to 3mm. This facilitates the quick and easy alignment of the sliding sash to jamb during assembly.

## FFI UltraVue Tandem Roller Kit - For panels 661-990 lbs

- Use with UltraVue Carriage Assembly and LAD170SH window gear
- Not designed for use with LAD170DL window gear
- Ask for details on weight capacity and cycle testing
- Kits include carriages, 2 link rod pins, 2 40mm link rod pieces, 4 screws 4.2 x 38mm (#10 x 1.5")

Item #	Description
<b>LAR200T003</b>	304 SST Ultravue Tandem carriage kit
<b>LAR200T004</b>	430 SST Ultravue Tandem carriage kit



## Guides & Accessories

Panel guides and accessories (track caps, screws, link rod guides, sash guides etc) are available for all sash types (wood, clad, steel, aluminum, composite and PVC/vinyl).  
Ask FFI for recommendations, and use the FFI BOM calculator to easily determine items needed.

Carriage shown with LAD170DL window gear with 25.4mm backset.



LINK RODS FOR FFI SST LIFT SLIDE

Needed with FFI lift slide carriages. Pre-drilled holes for connecting pins.  
Made from premium 304 grade stainless steel.



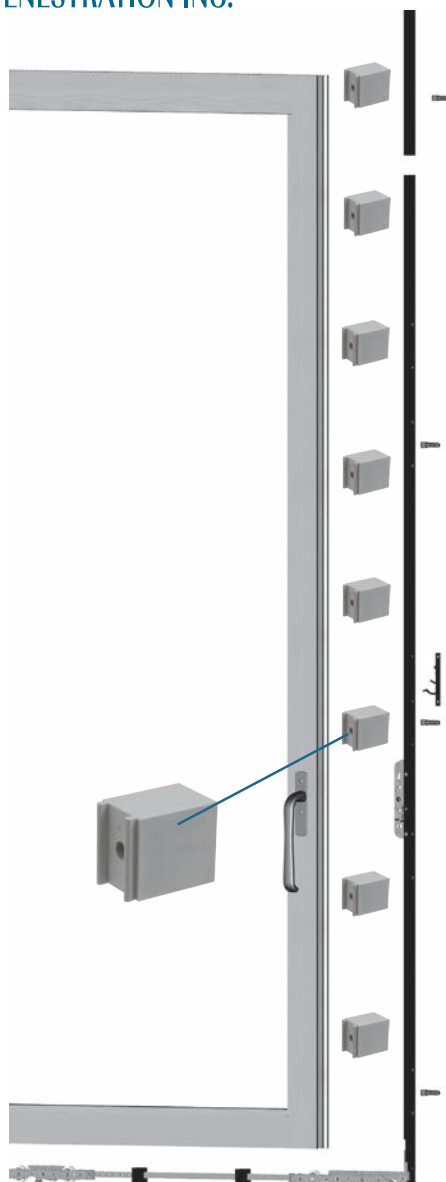
Link rod comes pre-drilled,  
ready to attach to lift slide  
carriage.

<b>Material</b>	304 grade Stainless Steel
<b>Thickness</b>	4mm (3/16")
<b>Carriage Compatibility</b>	All FFI Carriages assemblies and Carriage Kits LAR3000A18 Adjustable Carriage 304 SST Kit LAR3000A19 Adjustable Carriage 430 SST Kit LAR3000A10 Adjustable Carriage 304 Assembly LAR3000A16 Adjustable Carriage 430 Assembly LAR2000A10 UltraVue Carriage 304 SST Assembly

Link Rods

Item #	Length	Material
<b>LCR0000012</b>	2600mm (102")	SST 304
<b>LCR0000013</b>	1250mm (49")	SST 304
<b>LCR0000014</b>	525mm (20 5/8")	SST 304





## FFI LIFT SLIDE FOR ALUMINUM AND VINYL DOORS

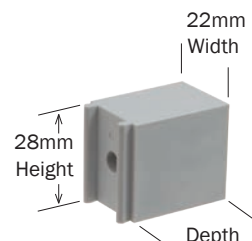
FFI Stainless Steel lift slide systems are compatible with aluminum doors, and with many popular vinyl profiles. The guides below make it easy to attach FFI lift slide gears into sashes of most any material. The guides insert into the stile milling groove and are sized for snap-on attachment to FFI lift slide gears.

PVC	WOOD	AL-WOOD	ALUMINUM

## Sash Guides

Sold in packs of 8 (8 guides per 8' tall panel)

Item #	Depth	Material
<b>LSG2811000</b>	11mm	Aluminum
<b>LSG2814501</b>	14.5mm	Nylon
<b>LSG2815801</b>	15.8mm	Nylon
<b>LSG2817000</b>	17mm	Aluminum
<b>LSG2818801</b>	18.8mm	Nylon
<b>LSG2820500</b>	20.5mm	Aluminum
<b>LSG2825001</b>	25mm	Nylon
<b>LSG2830001</b>	30mm	Nylon



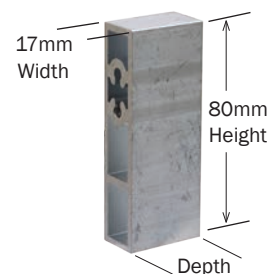
## Additional Sizes

Other depths available  
7.5mm, 10mm,  
23mm, 28mm  
available by special order.

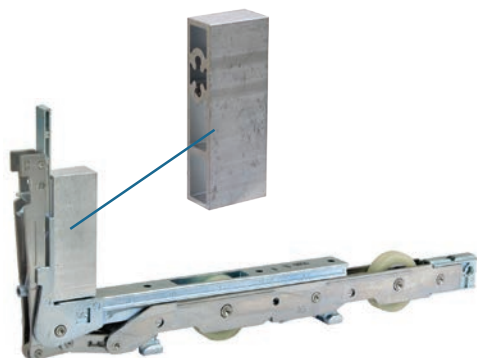
## Corner Sash Block

Connects to each front carriage

Item #	Depth	Material
<b>LSB1100000</b>	11mm	Aluminum
<b>LSB1450000</b>	14.5mm	Aluminum
<b>LSB1580000</b>	15.8mm	Aluminum
<b>LSB1700000</b>	17mm	Aluminum
<b>LSB1880000</b>	18.8mm	Aluminum
<b>LSB2050000</b>	20.5mm	Aluminum
<b>LSB2500000 *</b>	25mm	Aluminum
<b>LSB3000000</b>	30mm	Aluminum



\*Compatible with VekaSlide 70 and Euroview 70 vinyl profiles; Ask FFI for details.







LLB4000000



LLB4000001



LLB4000002



LLB4000003



LLB.631.12



LLB1S



4619117



1627386



## LOCK BOLTS FOR FFI LIFT SLIDE GEARS

304 grade stainless steel lock bolts, use with FFI lift slide gears, one for each locking point.

### Type J Lock Bolts

Item #	Description	Use	Material	Finish
<b>LLB4000000</b>	Type J lock bolt	Wood or metal jamb	304 SST	Silver
<b>LLB4000001</b>	Type J lock bolt	Wood or metal jamb	304 SST	Black
<b>LLB4000002</b>	Type J lock bolt	Wood jamb	304 SST	Silver
<b>LLB4000003</b>	Type J lock bolt	Wood jamb	304 SST	Black

### Type N Coaxial Lock Bolts

Item #	Description	Use	Material	Finish
<b>LLB.630.12</b>	Tapered Type N Coaxial lock bolt	Wood or metal jamb	304 SST	Silver
<b>LLB.631.12</b>	Tapered Type N Coaxial lock bolt	Wood or metal jamb	304 SST	Black
<b>LLB1S</b>	Extra shim for Type N Coaxial lock bolt	Wood or metal jamb	304 SST	Silver

Type N coaxial lock bolts include:

- (1) backplate
- (2) M5x20 screws
- (2) M5x60mm screws
- (1) shim



### Type P Coaxial Lock Bolts

Item #	Description	Use	Material	Finish
<b>4619117</b>	Type P Coaxial lock bolt	Vinyl, metal or wood jamb	304 SST	Silver
<b>1627565-2</b>	Lock bolt shim kit	Vinyl, metal or wood jamb	430 SST	Silver
<b>1627386</b>	Lock bolt shim kit	Vinyl, metal or wood jamb	304 SST	Silver

## FFI LIFT SLIDE JIG

Use to position FFI lift slide lock bolts (all types) on the jamb.

Item #	Description	Material
<b>G00746.00.05-M</b>	Lock bolt positioner jig with notch	Steel



Dark Bronze Aluminum



Clear anodized (silver) Aluminum



Plain unfinished (mill) Brass



Dark Bronze (shown with end cap)

## FFI HIGH PROFILE BOTTOM TRACK

The most popular bottom track, the high-bottom track provides more weather protection than the standard low profile track.

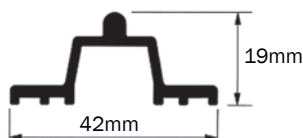
- High profile track provides more weather protection than low profile track
- Track has 5mm diameter, adapts to almost any arrangement
- FFI aluminum track is Made-in-USA and Class I anodized for 3,000 hour salt-spray corrosion resistance per ASTM B117-07
- Ask FFI for technical details

### Aluminum High Bottom Track

<b>G00739.165.01D</b>	13'9" (4191mm)	Aluminum	Silver (clear) anodized
<b>G00739.165.02D</b>	13'9" (4191mm)	Aluminum	Dark Bronze (Black) anodized
<b>G00739.244.01D</b>	20'4" (6197mm)	Aluminum	Silver (clear) anodized
<b>G00739.244.02D</b>	20'4" (6197mm)	Aluminum	Dark Bronze (Black) anodized

### Brass High Bottom Track

<b>G00739.03.03</b>	19'8" (6000mm)	Brass	Unfinished (mill)
---------------------	----------------	-------	-------------------



### Track Accessories

<b>LSBTC00101</b>	End cap for high bottom track	Nylon	Black
-------------------	-------------------------------	-------	-------



## FFI LOW PROFILE BOTTOM TRACK

Low-profile track, for minimal visual and physical interruption in the floor transition.



Dark Bronze Aluminum



Clear anodized (silver) Aluminum



Plain unfinished (mill) Brass

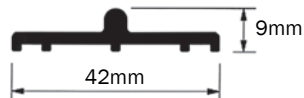
- Track has 5mm diameter, adapts to almost any arrangement
- FFI aluminum track is Made-in-USA, Class I anodized for high durability and lower corrosion risk
- Ask FFI for technical details

### Aluminum Low Bottom Track

<b>G00738.165.01D</b>	13'9" (4191mm)	Aluminum	Silver (clear) anodized
<b>G00738.165.02D</b>	13'9" (4191mm)	Aluminum	Dark Bronze (Black) anodized
<b>G00738.244.01D</b>	20'4" (6197mm)	Aluminum	Silver (clear) anodized
<b>G00738.244.02D</b>	20'4" (6197mm)	Aluminum	Dark Bronze (Black) anodized

### Brass Low Bottom Track

<b>G00738.03.03</b>	19'8" (6000mm)	Brass	Unfinished (mill)
---------------------	----------------	-------	-------------------



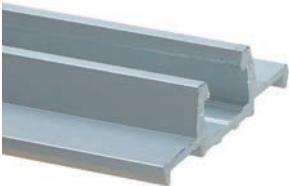
### Track Accessories

<b>G01611.00.00</b>	Anti-Derailer block for low-bottom track	Zamack with activage finish	Silver
<b>G01611.SL.00</b>	Anti-Derailer block for UltraVue carriages	Zamack with activage finish	Silver

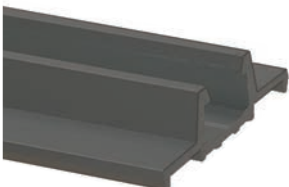


## C-STYLE BOTTOM TRACK HIGH PROFILE 2-PART

- High profile track provides more weather protection than low-profile track
- 5mm diameter snap-in track, adapts to almost any arrangement
- Screws are hidden under the removable/replaceable track insert
- Bottom footing of track can be recessed into floor
- Aluminum finished with Class II anodizing
- Ask FFI for technical details



Silver (clear anodized) Aluminum



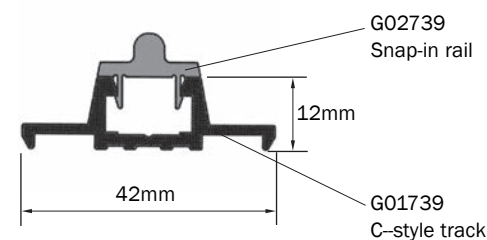
Dark Bronze Aluminum

### Aluminum Insert for track - Use with G01739 C-style track & G01741 threshold

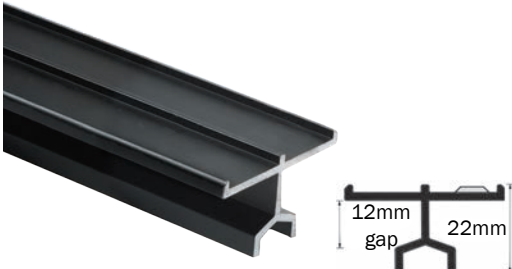
<b>G02739.04.01</b>	6 meter (19'8")	Aluminum	Silver (clear) anodized
<b>G02739.04.02</b>	6 meter (19'8")	Aluminum	Dark Bronze (Black) anodized

### C-style aluminum bottom track - Order with G02739 insert

<b>G01739.04.01</b>	6 meter (19'8")	Aluminum	Silver (clear) anodized
<b>G01739.04.02</b>	6 meter (19'8")	Aluminum	Dark Bronze (Black) anodized







12mm top air gap  
between panel and  
header



27mm top air gap  
between panel and  
header



G00728.00.04  
Use instead of  
coping the jamb stop.

## FFI UNIVERSAL TOP TRACK

FFI aluminum tracks are Made-in-America with Class I anodized finish and a 1-year warranty against corrosion failure.

### Characteristics

- Use for any layout, number of panels, or door thickness.
- 12mm top air gap between panel and header.
- FFI universal low profile track is the easiest to install for pocket applications.
- If combining with high bottom track, see installation instructions for details.
- FFI aluminum track is Made-in-USA and Class I anodized for 3,000 hour salt-spray corrosion resistance per ASTM B117-07

#### FFI Universal Low Profile Class I anodized top track (UL)

<b>G01734.165.01D</b>	13'9" (4191mm)	Aluminum	Silver (clear) anodized
<b>G01734.165.02D</b>	13'9" (4191mm)	Aluminum	Dark Bronze (Black) anodized
<b>G01734.244.01D</b>	20'4" (6197mm)	Aluminum	Silver (clear) anodized
<b>G01734.244.02D</b>	20'4" (6197mm)	Aluminum	Dark Bronze (Black) anodized

#### FFI Universal Standard Class I anodized profile top track (US)

<b>G00734.165.01D</b>	13'9" (4191mm)	Aluminum	Silver (clear) anodized
<b>G00734.165.02D</b>	13'9" (4191mm)	Aluminum	Dark Bronze (Black) anodized
<b>G00734.244.01D</b>	20'4" (6197mm)	Aluminum	Silver (clear) anodized
<b>G00734.244.02D</b>	20'4" (6197mm)	Aluminum	Dark Bronze (Black) anodized

#### FFI Universal Heavy Duty Class I anodized profile top track (HD)

<b>LSTTHD.244.710</b>	20'4" (6197mm)	Aluminum	Dark Bronze (Black) anodized
-----------------------	----------------	----------	------------------------------

#### Anti-lifting screw for US top tracks - Screw into track for enhanced security

<b>G40728.00.20</b>	Anti-lift (anti-burglary) screw	Steel	silver corrosion resistant
---------------------	---------------------------------	-------	----------------------------



#### Universal top track accessories

<b>G00728.00.04</b>	End cap for Universal Standard and Universal Low Profile top track Not for Heavy Duty top track	Rubber	Black
<b>LSFTG00000</b>	Top guide front terminal	Plastic	Black
<b>LSRTG00106</b>	Top rear track cap with tongue and bumper	Plastic/rubber	Black
<b>LSRTG00009</b>	Top rear track cap with tongue (no bumper)	Plastic/rubber	Black

Top front track  
terminal



LSFTG00000

Top rear track cap with  
tongue. Used  
for reducing panel  
vibrations and  
enhanced security.



LSRTG00106



LSRTG00009

## C-STYLE TOP TRACK

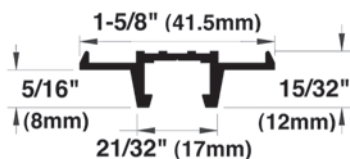
European style aluminum track, Class II anodized finish.

### Characteristics

- Use for: Any type of door arrangement, with any number of sliding panels or thicknesses.
- 12mm top air gap between panel and header (same as UL track).
- Clean look; minimal track protrusion.
- G01739 can also be used for 2-part bottom track.
- Easy panel installation, especially with high bottom track.
- Useful for curved lift slide applications.
- When C-style is used with pocket applications, specialized milling is needed. See installation guide.
- C-style track is European made, with Class II anodizing.

#### Low profile top track (C-style)

<b>G01739.04.01</b>	6 meter (19'8")	Aluminum	Silver (clear) anodized
<b>G01739.04.02</b>	6 meter (19'8")	Aluminum	Dark Bronze (Black) anodized



#### Required Items

- C-Style top track
- Top seal G00733.07.01
- Accessory kit G00758.02.68

#### Seals for C-style top track

<b>G00733.07.01</b>	Top seal for C-style track - Order 1 meter for each meter of track
<b>G00756.00.93</b>	Top insulation strip for C-style track Use with metal panel interlock



G00733.07.01



G00756.00.93

#### Accessory kit for C-style top track - Order 1 accessory kit for each sliding (x) panel

<b>G00758.02.68</b>	Accessory kit for C-style track contains <ul style="list-style-type: none"> <li>• Top front shaped cap</li> <li>• Top front guide (adjustable)</li> <li>• Top rear guide with rubber bumper (adjustable)</li> </ul>
---------------------	---



Top front cap



Top front guide



Top rear guide

## GASKETS, WEATHERSEAL AND ACCESSORIES



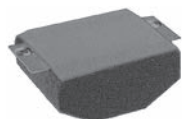
LSGK.TUP.150



LSGK.BTP.150



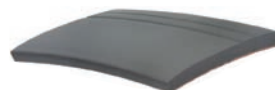
G00733.03.03



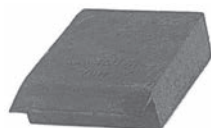
G00728.00.30



G00728.12.15



G00728.00.24



G00728.00.22

**FFI Top Universal gasketing** - compatible with universal top tracks (UL or US).  
Flexible seal, for oil or water-based paints

**LSGK.TUP.150** Top seal for universal top track 45 meter (150') PVC Black

**LSGK.TUP.500** Top seal for universal top track 152 meter (500') PVC Black

LSGK.TUP seal is for Universal top track – If you are using C-style top track, see C-style top seal on page 12 (G00733.07.01).

**FFI bottom/side gasketing** - Flexible seal, for oil or water-based paints  
(150 or 500ft per box)

**LSGK.BTP.150** Bottom/side seal for lift slide 45 meter (150') PVC Black

**LSGK.BTP.500** Bottom/side seal for lift slide 152 meter (500') PVC Black

### Gliding rail multiple panel weather seal

**G00733.03.03** 3 meter (9'10") Neoprene Black

### Top insulating strips - optional seal for Universal top track

**G00728.00.30** Seal for 56mm panels For US track Foam Grey

**G00728.00.15** Seal for 68mm panels For US track Foam Grey

**G00728.12.15** Seal for top panel For UL track Brush Black

### Bottom insulation strip - installs between bottom track and multiple panels

**G00728.00.24** Seal for high bottom track Rubber Black

### Bottom insulation strip - for standard threshold bottom track

**G00728.00.22** Seal for 56mm (2¼") panels Rubber Black

**G00728.00.21** Seal for 68mm (2¾") panels Rubber Black

### Panel accessories

**G00204.00.93** Door bumper Plastic/Rubber Black

**G00728.00.23** Corner frame link kit



G00204.00.93 Door bumper

- Prevents fixed handles or double handles from bumping into one another.
- Prevents fixed handles or double handles from bumping into packet jamb.
- Used when moving panels are not as wide as the fixed panels.
- Used when multiple panels on parallel tracks overlap each other.



G00728.00.23

Corner frame link kit. Connects head (top rail) and side (stile) jambs. Allows easier transport of large frames for job site assembly.





## GASKET WITH WELDED CORNER

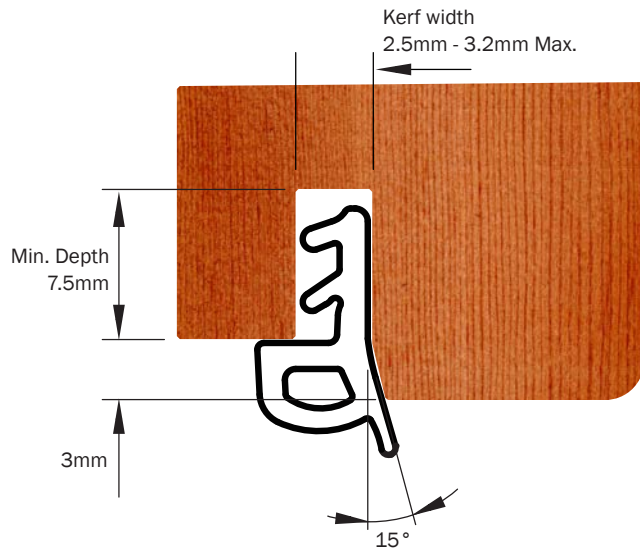
Thermal-resistant gasket with welded corner to ensure proper weathersealing.

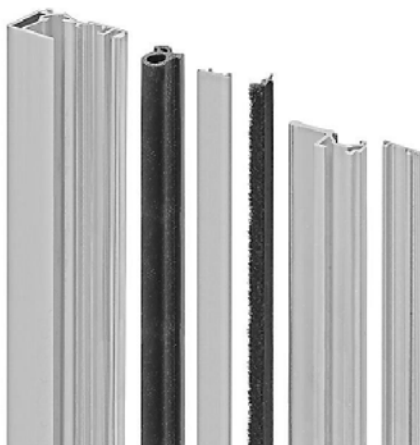
### Characteristics

- For lift slide door applications.
- Recommended as a bottom and side panel seal for lift slide doors.
- Each gasket kit includes left and right handed gasket.
- No need for notched gaskets (no corner cutting by hand)

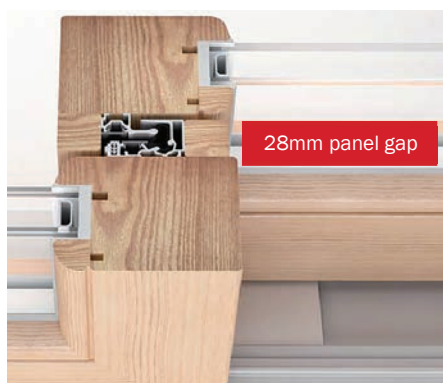
#### Welded corner gasket

<b>G02000.13.93</b>	3 meter x 3 meter (9'10" x 9'10")	Rubber	Black
<b>G02000.15.93</b>	4 meter x 4 meter (13'1½" x 13'1½")	Rubber	Black





Clear anodized (silver) shown



## UNI-V: A BETTER INTERLOCK FOR SLIDING DOORS

An engineered, high performance solution for sliding panels.

- Easy panel alignment with wide milling tolerances
- For sliding panels with 1½" (28mm) panel gap
- Full panel height provides additional strength between panels for hurricane testing
- Saves assembly time with simple installation, comes predrilled for 3.5 x 30mm (#6 x 1¼") screws (not included)
- Eliminates contact points between the sash and frame for silent operation
- Kit includes EPDM bulb gasket, brush seal and two aluminum profiles, one for each panel
- Includes screw cover to conceal screws for a clean look
- Aluminum finished with Class II anodizing
- Ask FFI for technical details
- 28mm nominal gap with +2/-3mm lateral and +/-3mm "in-out" adjustment

## UNI-V STANDARD CENTRAL POINT INTERLOCK

**Uni-V central point kit - Use one per pair of panels**

<b>G02208.31.01</b>	3100mm (122")	Aluminum	Silver (clear) anodized
<b>G02208.40.01</b>	4000mm (157½")	Aluminum	Silver (clear) anodized
<b>G02208.31.93</b>	3100mm (122")	Aluminum	Black anodized
<b>G02208.40.93</b>	4000mm (157½")	Aluminum	Black anodized

### Accessories

<b>G01610.DX.93</b>	Right hand cap kit
<b>G01610.SX.93</b>	Left hand cap kit



## UNI-V MINI CENTRAL POINT INTERLOCK

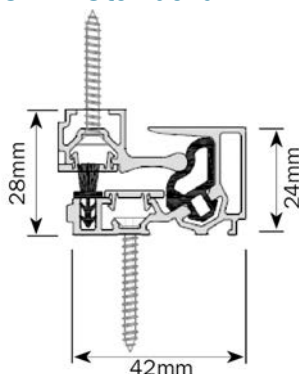
**Uni-V Mini central point kit - Use one per pair of panels**

<b>G02211.31.01</b>	3100mm (122")	Aluminum	Silver (clear) anodized
<b>G02211.40.01</b>	4000mm (157½")	Aluminum	Silver (clear) anodized
<b>G02211.31.93</b>	3100mm (122")	Aluminum	Black anodized
<b>G02211.40.93</b>	4000mm (157½")	Aluminum	Black anodized

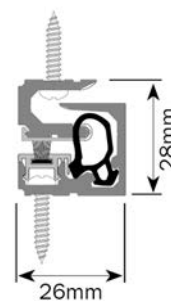
### Accessories

<b>G01623.DX.93</b>	Right hand cap kit
<b>G01623.SX.93</b>	Left hand cap kit

### Uni-V Standard 42mm



### Uni-V Mini 26mm





## ACCESSORIES FOR WOOD INTERLOCK

Essentials for basic wood interlocking panels.

- Basic interlock components using brush (for decompression chamber) (available in pipe) and gasket material in 150 and 500 foot rolls
- For wood or aluminum clad wood panels with 28mm panel gap and 6mm air gap
- Ask FFI for technical details

### Brush for decompression chamber

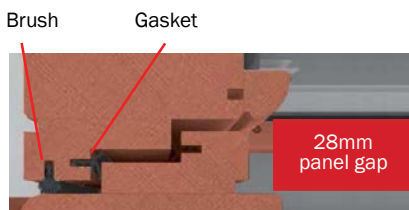
Use one per panel pair

<b>G02002.31.00</b>	3100mm (10' 2")	Black
---------------------	-----------------	-------

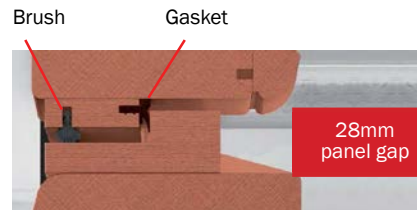
### Gasket

<b>LSGK.BTP.150</b>	150' roll	Black
---------------------	-----------	-------

<b>LSGK.BTP.500</b>	500' roll	Black
---------------------	-----------	-------



Basic Type Interlock



Easy Type Interlock



## FFI PANEL INTERLOCKS

Durable brass or aluminum (Class I anodized) for long life corrosion resistance. 1-year warranty.

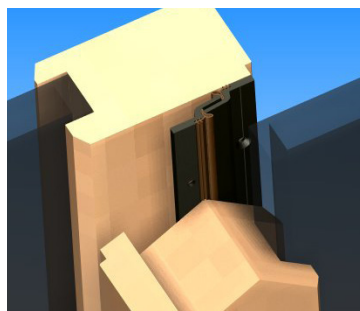
- Easy panel alignment - Handles minor misalignments
- For wood or aluminum clad wood panels with  $\frac{1}{2}$ " -  $\frac{9}{16}$ " (12 to 15mm) air gap
- Provides additional strength between panels for hurricane testing
- Saves assembly time with simple installation
- See data sheet or installation instructions for more information

Panel Interlock	Order two pieces to connect two panels		
<b>SL300.12.01</b>	12' (3657mm)	Aluminum	Silver (clear) anodized
<b>SL300.12.02</b>	12' (3657mm)	Aluminum	Dark Bronze (Black) anodized
<b>SL300.12.03</b>	12' (3657mm)	Brass	Unfinished (mill)

Screws	One screw recommended every three inches		
<b>LVP 25S</b>	#6, 3.5 x 25mm (1") flathead screw	Steel	Silver
<b>LVP 25B</b>	#6, 3.5 x 25mm (1") flathead screw	Steel	Black
<b>LVP25SSST</b>	#6, 3.5 x 25mm (1") flathead screw	SST	Silver
<b>LVP25BSST</b>	#6, 3.5 x 25mm (1") flathead screw	SST	Black



Interlock gasket	Universal for oil or water-based paint	
<b>SLGK.02.024</b>	24' length PVC gasket (connects 1 set of 2 panels)	Black
<b>SLGK.02.750</b>	750' roll PVC gasket (connects 31 sets of 62 panels)	Black





## FFI SST 2-WHEEL SCREEN ROLLER

430 stainless steel screen rollers, use the same track as lift slide doors; compatible with FFI FASTrack (to place a screen on the outward track). Other applications include exterior or interior pocket doors, room dividers and more.



LAR300019  
Stainless Steel / Nylon Wheels



Adjust the roller using a standard  
M6 Allen Wrench

- Delrin wheels carry up to 660 lb doors maximum
- Durable ball-bearings
- Height adjustment of up to 6mm (+/- 3mm) at each end of the door panel
- Compatible with any FFI lift slide track
- Easy installation
- Screws recommended: #8 Philips flat head, stainless steel, length and thread to suit material (not included)

**SST Twin roller** - Order 2 per door, for 5mm diameter lift slide track

Part #	Casing	Wheel	Weight Capacity*
<b>LAR3000019</b>	430 Stainless Steel	Delrin	660 lbs

\* Maximum door weight using two rollers

## FFI SST 1-WHEEL SCREEN ROLLER

304 stainless steel screen rollers, use the same track as lift slide doors; compatible with FFI FASTrack (to place a screen on the outward track). Other applications include exterior or interior pocket doors, room dividers and more.



LAR2500014  
Stainless Steel / Nylon Wheels

- Nylon wheels carry up to 220 lb doors (maximum door weight using 2 rollers)
- Compatible with any FFI lift slide track
- Easy installation

**SST Single roller** - Order 2 per door, for 5mm diameter lift slide track

Part #	Casing	Wheel	Weight Capacity*
<b>LAR2500014</b>	304 Stainless Steel	Nylon	220 lbs

\* Maximum door weight using two rollers