

# Bi-Fold Door Hardware

## Bi-Fold Door Hardware

System Intro: Clearspan, Visofold	I-2 to I-3
Main Door Guides & Rollers	I-4
Main Door Lock Kits & Handles	I-5
Intermediate Door Guides & Rollers	I-6
Intermediate Door Lock Kits & Handles	I-7
Hinges, Pulls, Catches & Restrictors	I-8

# greenteQ Clearspan

greenteQ Clearspan bi-fold system for aluminum doors allows door manufacturers to design and build slimline aluminum bi-fold doors with minimal visible hardware. Ask FFI for advice and details on compatible aluminum profiles that you may select and fabricate, including Visofold 1000 and Reynaers. The hardware in this catalog is compatible specifically with Visofold 1000 aluminum profiles, which allow versatile configuration options.



## Coming Soon

### GREENTEQ VISOFOLD ELITE BI-FOLD SYSTEM FOR WOOD DOORS

The new GreenteQ Visofold Elite system for wood doors allows door manufacturers to fabricate bi-fold doors with attractive features:

Max panel weight	90kg (120kg in development)
Choice of Function	Top-hung rollers (with bottom guide) or Bottom rollers (with top guide)
Available Tracks	FFI Aluminum tracks
Warranty	5 years
Components	High-grade aluminum with 4 color options



## OVERVIEW OF FEATURES: GREENTEQ BI-FOLD DOOR SYSTEMS

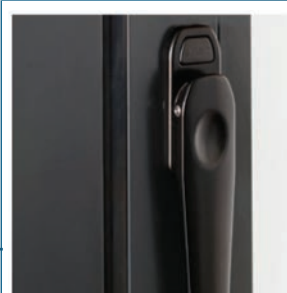
- Multiple panels fold open to the side to create wide, uninterrupted views
- Slim line hardware allows many design options for elegant folding panels
- Layout option for traditional single swing door that operates while other panels remain locked



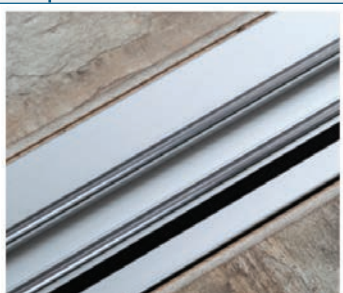
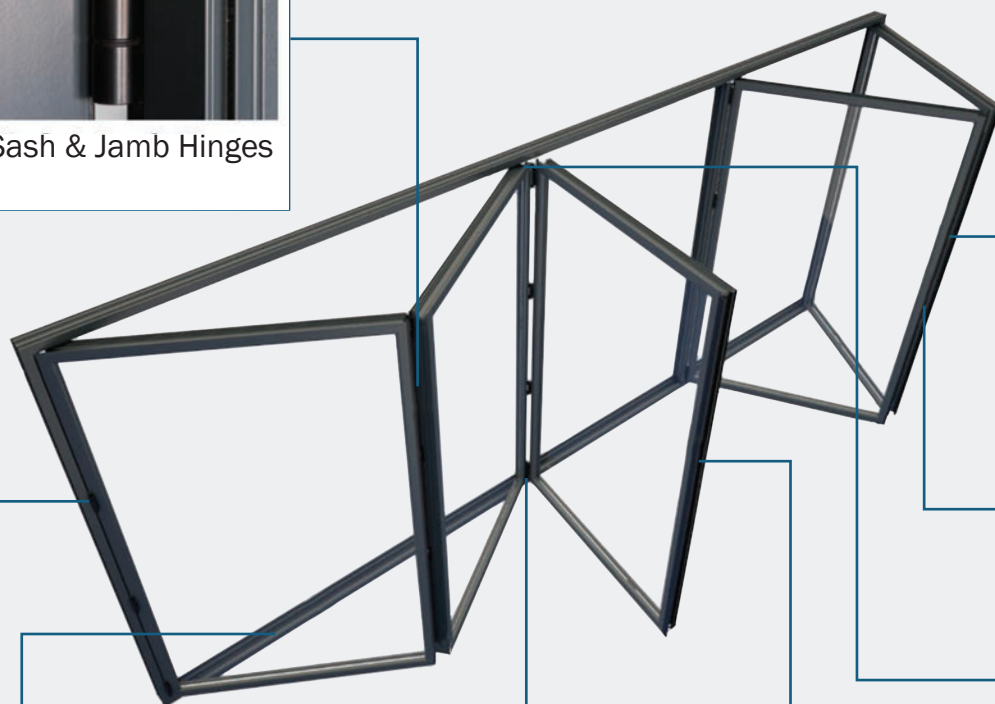
Sash & Jamb Hinges



"D" Handle pulls with hinges



Low profile sash handle

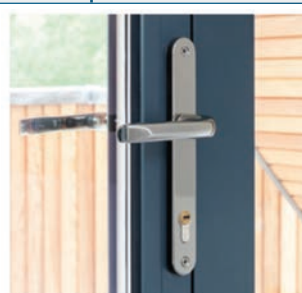


Bottom Track

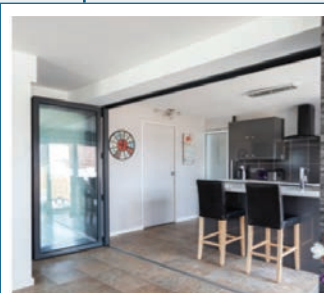
Aluminum doors: by your profile maker  
Wood doors: available from FFI



Bottom Rollers



Lock & Handles for Main Swing Door

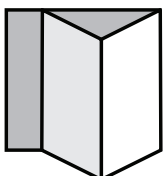


Top Guides

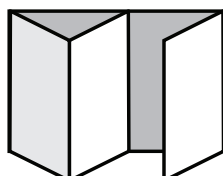
Aluminum doors: by your profile maker  
Wood doors: available from FFI

### Sample Bi-Fold Door Layouts (many configuration options are possible)

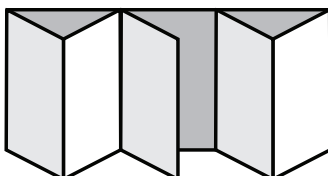
2 - 0 - 2



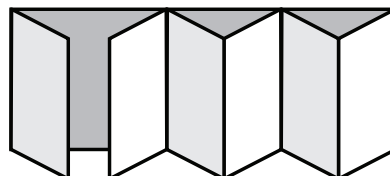
3 - 2 - 1



5 - 3 - 2



6 - 1 - 5





## GREENTEQ CLEARSPAN BI-FOLD SYSTEM FOR ALUMINUM DOORS

- FFI is the exclusive North American distributor for greenteq hardware by VBH (GB) Ltd
- Compatible aluminum profiles: Visofold 1000 (ask FFI for profile details; bi-fold system for Reynaers profiles also available)
- System Materials: Aluminum, zinc, and steel
- Capacity: up to 120kg sash weight
- Warranty: 10 years

### Characteristics

- Smooth operation
- Unobtrusive slimline hardware maximizes clean lines of the door
- Bottom roller system (rather than top roller)
- Three finishes: black, white, and grey
- Lock set for main door employs hooks, bolts, and cams
- Intermediate lock works with Clearline handles to secure the door
- Corrosion testing: Standard 1670 Class 5 tested (480 hours)
- Performance tested for air, wind, and water
- Bottom hinges have rollers & brushes
- Magnetic catches to hold sashes open
- 5mm vertical adjustment

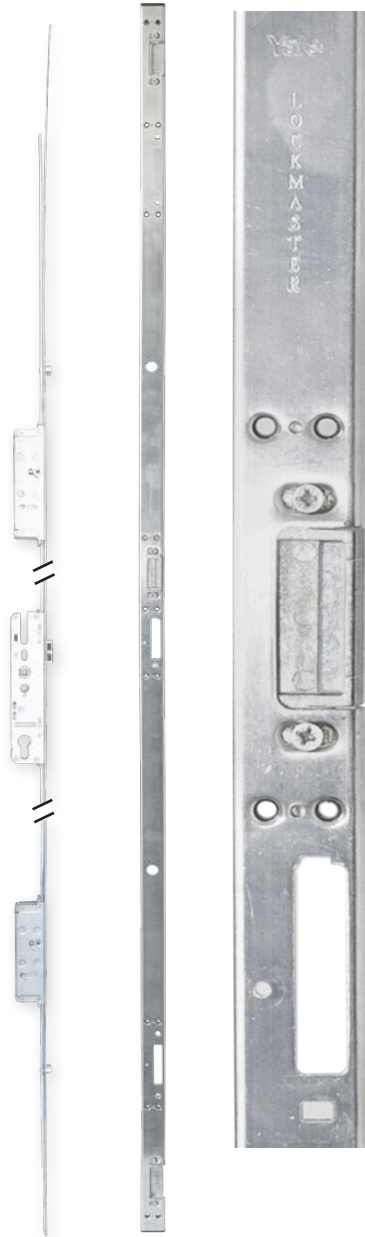
### Clearspan Bi-fold system for Visofold 1000 profile

- Hardware below for Visofold 1000 (Reynaers by request)
- Suits standard 60mm and slim 55mm profiles

### Top Guides and Bottom Rollers

Items	Description	Powder-Coated Finishes
<b>4QBF1001</b>	Top Guide	White RAL 9016
<b>4QBF1002</b>	Top Guide	Black RAL 9005
<b>4QBF1003</b>	Top Guide	Anthracite Grey RAL 7016
<b>4QBF1031</b>	Bottom Roller	White RAL 9016
<b>4QBF1032</b>	Bottom Roller	Black RAL 9005
<b>4QBF1033</b>	Bottom Roller	Anthracite Grey RAL 7016





## CLEARSPAN MAIN DOOR LOCK KITS

For swinging walk-through panels on bi-fold doors

- Handing with door opening viewed from the outside
- Use with Alpha Slimline door handles

Items	Description
<b>4QBF1023</b>	Single Main Door Lock Kit Yale, 60mm profile LH hung outward (or RH inward)
<b>4QBF1024</b>	Single Main Door Lock Kit Yale, 60mm profile RH hung outward (or LH inward)
<b>4QBF1019</b>	Double Main Door Lock Kit Yale, 60mm profile LH hung outward (or RH inward)
<b>4QBF1020</b>	Double Main Door Lock Kit Yale, 60mm profile RH hung outward (or LH inward)



## ALPHA SLIMLINE DOOR HANDLES

Use with lock kits above; 92mm center, sprung lever, non-handed

Items	Description	Finishes
<b>2QHB0321</b>	Alpha Slimline Door Handle	White RAL 9016
<b>2QHB0324</b>	Alpha Slimline Door Handle	Black RAL 9005
<b>2QHB0330</b>	Alpha Slimline Door Handle	Anthracite Grey RAL 7016
<b>2QHB0326</b>	Alpha Slimline Door Handle	Polished Chrome
<b>2QHB0327</b>	Alpha Slimline Door Handle	Satin Chrome



## GREENTEQ CLEARSPAN BI-FOLD SYSTEM FOR ALUMINUM INTERMEDIATE DOORS



- FFI is the exclusive North American distributor for greenteq hardware by VBH (GB) Ltd
- Compatible aluminum profiles: Visofold 1000 (ask FFI for profile details; bi-fold system for Reynaers profiles also available)
- System Materials: Aluminum, zinc, and steel
- Capacity: up to 120kg sash weight
- Warranty: 10 years

### Characteristics

- Smooth operation
- Unobtrusive slimline hardware maximizes clean lines of the door
- Bottom roller system (rather than top roller)
- Three finishes: black, white, and grey
- Lock set for main door employs hooks, bolts, and cams
- Intermediate lock works with Clearline handles to secure the door
- Corrosion testing: Standard 1670 Class 5 tested (480 hours)
- Cycle tested for air, wind, and water
- Bottom hinges have rollers & brushes
- Magnetic catches to hold sashes open
- 5mm vertical adjustment

### Clearspan Bi-fold system for Visofold 1000 profile

- Hardware below for Visofold 1000 (Reynaers by request)
- Suits standard 60mm and slim 55mm profiles

### Top Guide and Bottom Roller Half Sets

To simplify even-number door configurations

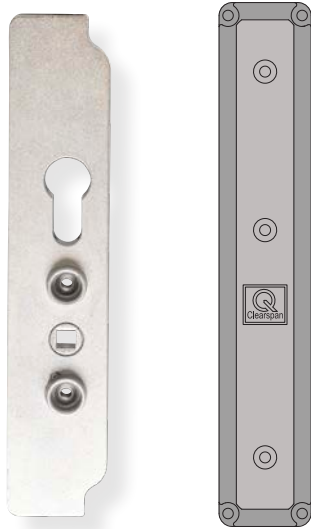
Items	Description	Powder-Coated Finishes
<b>4QBF1011</b>	Top Guide Half Set	White RAL 9016
<b>4QBF1012</b>	Top Guide Half Set	Black RAL 9005
<b>4QBF1013</b>	Top Guide Half Set	Anthracite Grey RAL 7016
<b>4QBF1041</b>	Bottom Roller Half Set	White RAL 9016
<b>4QBF1042</b>	Bottom Roller Half Set	Black RAL 9005
<b>4QBF1043</b>	Bottom Roller Half Set	Anthracite Grey RAL 7016





## INTERMEDIATE DOOR LOCK KITS FOR BI-FOLD INTERMEDIATE MEETING PANELS

- Shootbolts with 24mm bolt throw; tapered shootbolts on 8mm threaded rods
- 24mm bolt throw.
- One kit includes: 1 gearbox, 1 gearbox cover, 2 end guides, 2 shootbolt rods
- Use with Clearline CentreFold door handle



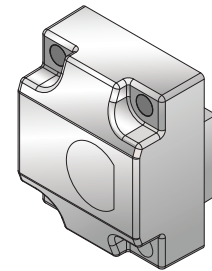
Gear Box

Gear Box Cover  
(Black)

Items	Description
<b>4QBF1030-1</b>	Clearspan V1000 Intermediate lock kit for 55mm profiles (1 kit)
<b>4QBF1026-1</b>	Clearspan V1000 Intermediate lock kit for 60mm profiles (1 kit)



Gear Box Cover (Black)



Two shootbolt strikes 60mm or 55mm

## Clearline Centrefold Door Handle

Low profile, use with intermediate locks to operate shootbolts



Locking Handle



Non-Locking Handle

Items	Description	Finishes
<b>4QBF0061</b>	Centrefold Intermediate Locking Handle	White RAL 9016
<b>4QBF0062</b>	Centrefold Intermediate Locking Handle	Black RAL 9005
<b>4QBF0068</b>	Centrefold Intermediate Locking Handle	Anthracite Grey RAL 7016
<b>4QBF0064</b>	Centrefold Intermediate Locking Handle	Polished Chrome
<b>4QBF0065</b>	Centrefold Intermediate Locking Handle	Satin Chrome
<b>4QBF0001</b>	Centrefold Intermediate Non-Locking Handle	White RAL 9016
<b>4QBF0002</b>	Centrefold Intermediate Non-Locking Handle	Black RAL 9005
<b>4QBF0008</b>	Centrefold Intermediate Non-Locking Handle	Anthracite Grey RAL 7016
<b>4QBF0004</b>	Centrefold Intermediate Non-Locking Handle	Polished Chrome
<b>4QBF0005</b>	Centrefold Intermediate Non-Locking Handle	Satin Chrome



## HINGES AND PULLS

Hinge with D-handle, use for meet-in-middle applications



4QGB1062



4QGB1063

Items	Description	Powder-Coated Finishes
<b>4QBF1061</b>	Hinge	White RAL 9016
<b>4QBF1062</b>	Hinge	Black RAL 9005
<b>4QBF1063</b>	Hinge	Anthracite Grey RAL 7016
<b>4QBF1071</b>	Hinge with Pull (for outward opening layouts)	White RAL 9016
<b>4QBF1072</b>	Hinge with Pull (for outward opening layouts)	Black RAL 9005
<b>4QBF1077</b>	Hinge with Pull (for outward opening layouts)	Anthracite Grey RAL 7016
<b>4QBF1091</b>	Half-hinge, with pull (for inward opening layouts)	White RAL 9016
<b>4QBF1092</b>	Half-hinge, with pull (for inward opening layouts)	Black RAL 9005
<b>4QBF1097</b>	Half-hinge, with pull (for inward opening layouts)	Anthracite Grey RAL 7016



4QBF1072



4QBF1077



4QBF1092



4QBF1097

## MAGNETIC CATCHES

To hold sashes in open position, 30mm diameter. Available in 2 heights and 6 colors



Items	Description	Height	Finishes
<b>4QBF0031</b>	Magnetic catch	26mm height	White RAL 9016
<b>4QBF0032</b>	Magnetic catch		Black RAL 9005
<b>4QBF0037</b>	Magnetic catch		Anthracite Grey RAL 7016
<b>4QBF0034</b>	Magnetic catch		Polished Chrome
<b>4QBF0035</b>	Magnetic catch		Satin Chrome
<b>4QBF0038</b>	Magnetic catch		Silver RAL 7040
<b>4QBF0041</b>	Magnetic catch	65mm height	White RAL 9016
<b>4QBF0042</b>	Magnetic catch		Black RAL 9005
<b>4QBF0047</b>	Magnetic catch		Anthracite Grey RAL 7016
<b>4QBF0044</b>	Magnetic catch		Polished Chrome
<b>4QBF0045</b>	Magnetic catch		Satin Chrome
<b>4QBF0048</b>	Magnetic catch		Silver RAL 7040



White



Black



Anthracite Grey



Polished Chrome



Satin Chrome



Silver

## 90° RESTRICTOR

Restricts opening angle to prevent sash damage

Items	Description
<b>2QMA0105</b>	335mm Restrictor
<b>2QMA0106</b>	500mm Restrictor

