

RELY ON FFI

**Innovation
Quality Products
Technical Expertise
Reliability**



ABOUT FFI

Functional Fenestration Inc (FFI) provides architectural hardware and component solutions to the fenestration (door and window) industry. Key strengths include solutions for large sliding doors, swinging doors, and all types of operable windows. Since 1987, our continuing vision is to serve as experts and innovative industry leaders, committed to superior quality in products, service, and reliability.

FFI SERVES

OUR CLIENTS

FFI clients include manufacturers and resellers of windows & doors. Our solutions are well-diversified for millworks, manufacturers, glazing contractors and metal fabricators, window & door dealers and resellers, hardware stores, decorative hardware showrooms, and hospitality contractors.

THE DESIGN COMMUNITY

FFI also works with architects, specifiers, interior designers, developers, and builders. We provide CAD drawings, solutions for application challenges, and support for projects in the design phase.



PRODUCT APPLICATIONS

FFI window & door systems provide innovative functionality, natural ventilation, daylighting and views for:

COMMERCIAL PROJECTS

- Hotels
- Multi-Family
- Restaurants
- Offices

RESIDENTIAL PROJECTS

- Patios
- Kitchens
- Bedrooms
- Baths & Spas



TODAY'S FFI: 3 AREAS OF EMPHASIS

1. FFI DESIGNED PRODUCTS

- Created by FFI Product Development team; only available from FFI
- Examples: FFI SST Lift Slide, Cascade handle, FASTrack, Anti-Derailer lock

2. WHOLESALE DISTRIBUTION

- In partnership with select top global manufacturers
- Partners include AGB, VBH(GB), Weider and Winkhaus

3. OEM HARDWARE & COMPONENTS

- Designed and produced to customer specifications
- Exclusivity and private label logo placement available

WHY FFI?

INNOVATION

- Product offerings are continually enhanced
- FFI Designed Products are inspired by market feedback & requests

QUALITY PRODUCTS

- Only products with the highest quality materials and features
- Products are assessed with the installer and end-user experience in mind

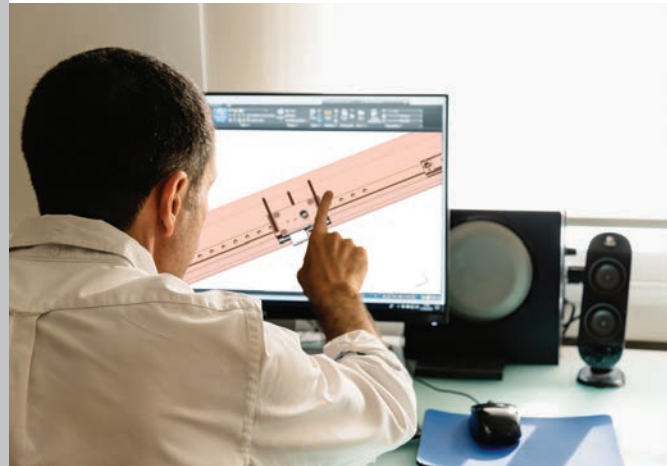
TECHNICAL EXPERTISE

- The FFI team delivers responsive, detailed, and accurate help
- CAD files, BOM product calculators, marketing support & more

DEPENDABILITY

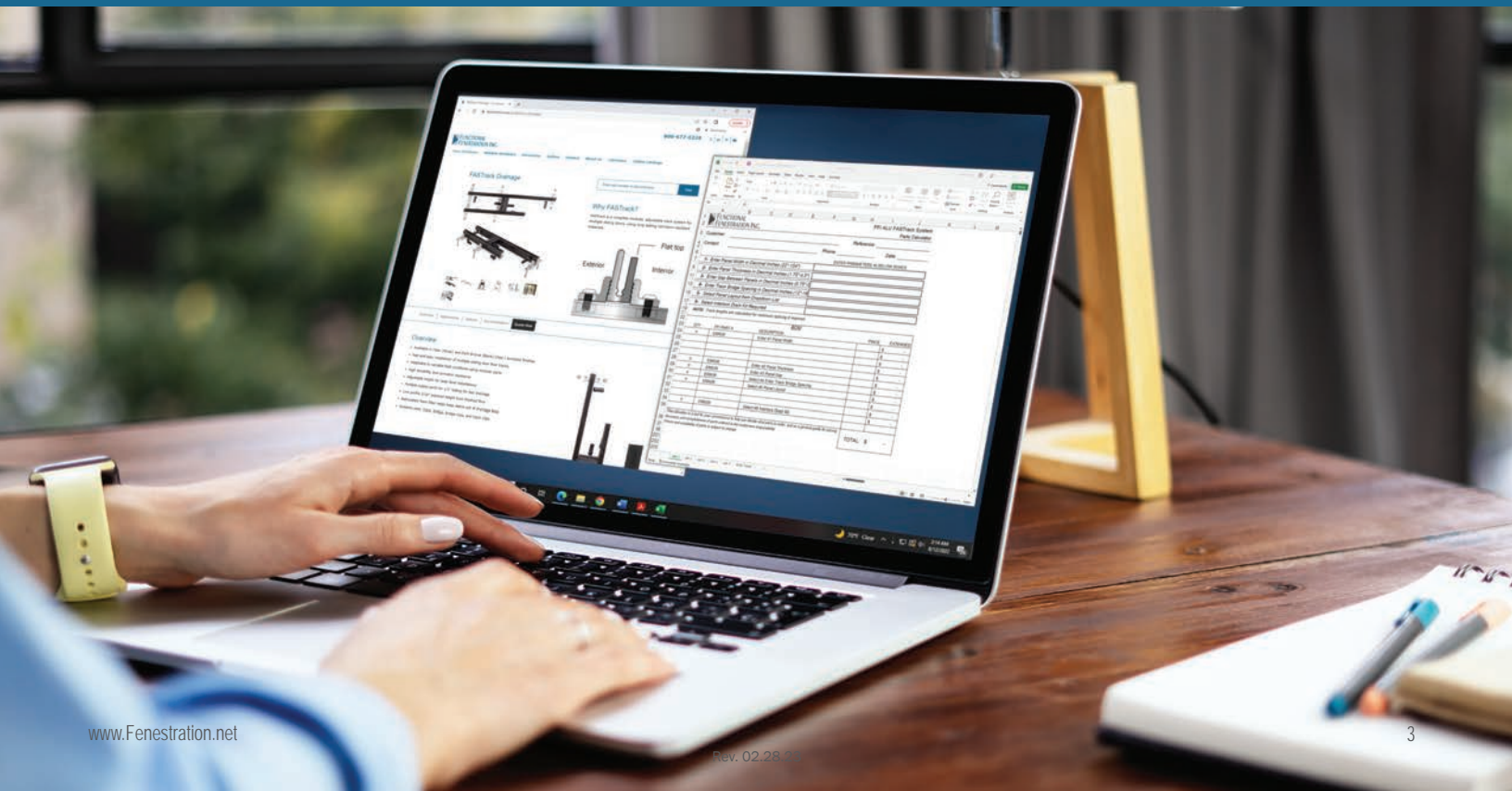
- FFI solutions are delivered within our commitment to transparency & ethics
- In-stock inventory is proactively planned to meet your needs

**OEM SERVICES
WITH CREATIVE SOLUTIONS
TO MEET YOUR NEEDS**



RELY ON FFI

FFI's management team has 100+ years fenestration industry experience.
We're here for you, because FFI believes our success is based on your success.
www.Fenestration.net



Extension

FFI Lift
Slide Gear

Lock Bolt

Panel Interlock

FFI Lift Slide Systems

High Performance System for Sliding Doors
For all sash types including Wood, Clad, Steel,
Aluminum, Composite and PVC.

- Premium 304 or economical 430 grade stainless steel gears and rollers
- Rated to 880 lbs. per door panel
- Salt spray tested to 3,000 hours corrosion resistance
- Gears accommodate up to 8'8" panels
- Panels heights up to 14ft tall
- Stocked in USA for just-in-time delivery
- 15 Year warranty
- Secure attachments (no set screws)

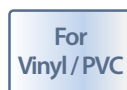
Edge Pull
Integrated and warrantied

Cascade Flush Handle



HD Assist
(Heavy Door)

Anti-Derailer Lock
Recommended for
hurricane testing

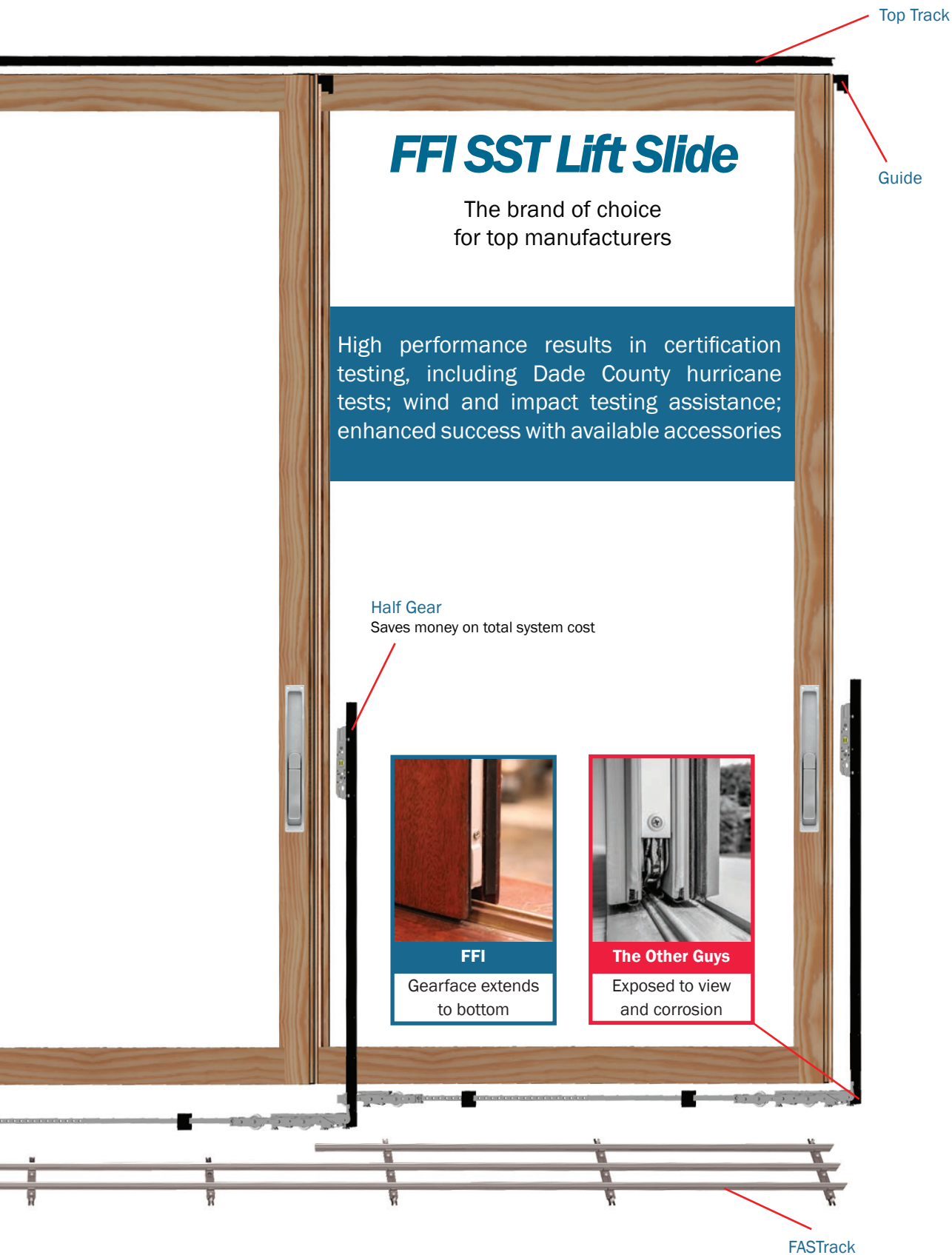


Link Rod

Adjustable Rear Carriage

Interlock Drainage Kit

Welded Corner Gasket
Weather seal

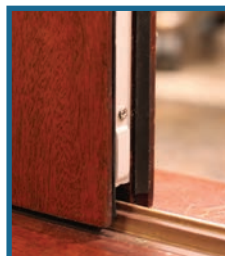


FFI SST Lift Slide

The brand of choice
for top manufacturers

High performance results in certification testing, including Dade County hurricane tests; wind and impact testing assistance; enhanced success with available accessories

Half Gear
Saves money on total system cost



FFI

Gearface extends
to bottom



The Other Guys

Exposed to view
and corrosion

TRACK SYSTEMS FOR SLIDING DOORS

FFI FASTRACK SIGNATURE SYSTEMS

FASTrack is a low-profile floor track system for single or multi-panel sliding doors.

- Corrosion-resistant systems: stainless steel & brass or Class I anodized aluminum
- Fast and easy installation of multiple sliding door floor tracks
- Adapts to variable field conditions using modular parts
- Adjustable track spacing & height for laser level installations
- Can pass wind and impact tests using FFI Anti-Derailer Lock

Available Finishes

- Clear Anodized Aluminum
- Stainless Steel



Anti-Derailer Lock



FFI FASTRACK DRAINAGE SYSTEM

FASTrack Drainage is a low-profile floor track system for single or multi-panel sliding doors, with flexible solutions to water diversion from door openings.

- In corrosion-resistant Class I anodized aluminum
- Fast and easy installation of multiple sliding door floor tracks
- Adjustable track spacing & height for laser level installations
- Can pass wind and impact tests using FFI Anti-Derailer Lock

Available Finishes

- Dark Bronze Aluminum
- Clear Anodized Aluminum

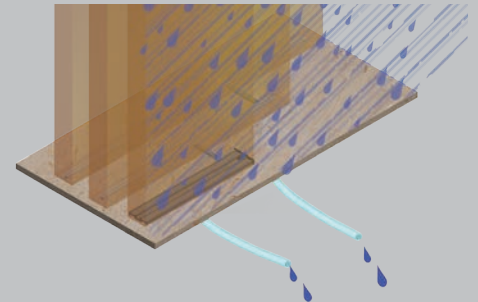
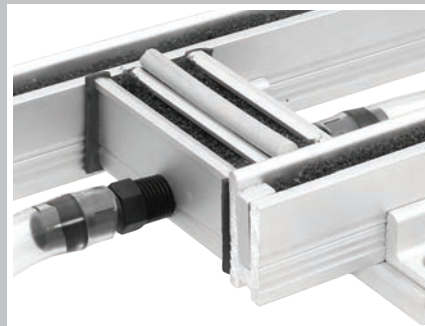


FFI INTERLOCK DRAINAGE KIT

The Interlock Drainage Kit is a flexible solution to water diversion from single or multi-panel door openings. It provides both interior and exterior drainage.

Available Finishes

- Dark Bronze Aluminum
- Clear Anodized Aluminum



WINKHAUS SLIDER DOOR LOCKS AND HANDLES

FFI exclusively offers Winkhaus hardware in North America; this lock and handle system features high quality materials and function.

- For 1¾" (45mm) or 2¼" (57mm) thick doors
- Stainless steel components include face-plate, hooks and strikes
- Spring-loaded double hooks automatically latch behind strike plate



Miami Handle shown
in PVD Satin Nickel



Winkhaus Slider Lock

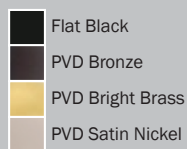
DOOR HANDLES FOR WINKHAUS SLIDER LOCK

High quality decorative door handle trim sets for Winkhaus Slider Lock.



Miami

Available Finishes

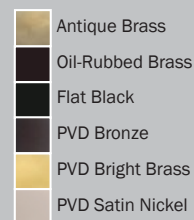


Botticelli



Fontana

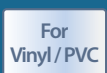
Available Finishes



TOUCH® MAGNETIC CATCH FOR INTERIOR DOORS & SCREENS

Patented contactless adjustable magnetic door catch.
Minimal design with no visible screws.

- Catching force is adjustable to meet almost all applications
- Minimal design with no visible screws
- Adjustable magnets retract when door is opened

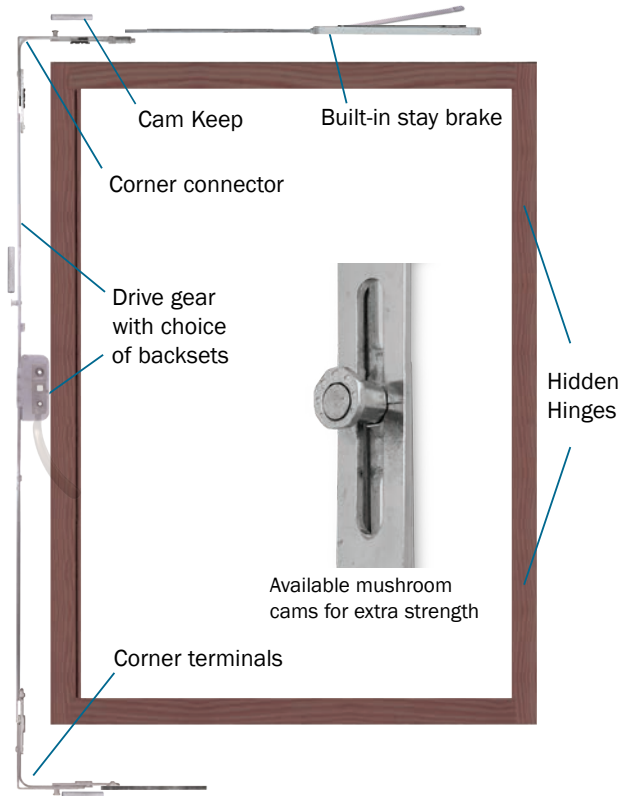


Touch Magnetic Catch



MULTIPOINT WINDOW HARDWARE

- For in-swing or out-swing windows
- Function - one handle activates multiple lock points



FFI DISTRIBUTES THESE QUALITY BRANDS IN NORTH AMERICA



Open, Close, Live

AGB Artech Window Hardware

- Activage coastal finish with 2,000 hour+ salt spray resistance
- Made in Italy with quality cold-forged steel
- Backsets: 15, 25, 30, 35, 40, 45, 50mm
- Modular drive rod and gear assemblies for simple and flexible inventory
- AGB window multipoint bottom terminals have a reversing gear
- Available staybrake



Winkhaus Window Hardware

- Suitable for narrow frames
- Made in Germany
- Backsets: 15.5, 25, 30mm
- Turn the handle down to use casement stay brake mechanism to stop the window at any point
- Punch press machines available for clean trim cuts of Winkhaus multipoint hardware

TILT TURN WINDOW HARDWARE

Tilt turn is ideal for large openings, secure alignment, warp-prevention and hurricane testing. Applications for tilt turn with tilt-in hopper function and turn-in casement function include in-swing single or double (French) windows, and concealed-hinge tilt turn windows are suitable for historic building renovations.

- High strength & security from multipoint locking on all four sides
- Supports large dual & triple-glazed windows with up to 2" glazing
- Helps meet LEED goals for daylighting and natural ventilation



AGB ARTECH PLANA

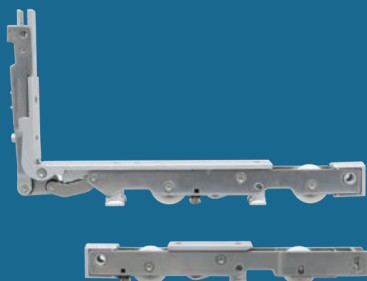
- Activage coastal finish with 2,000 hour+ salt spray resistance
- Backsets: 15, 25, 30, 35, 40, 45, 50mm
- Sash weights up to 330 lbs (150 kg)

WINKHAUS ACTIVPILOT TOPSTAR

- Suitable for narrow frames
- Backsets: 15.5, 25, 30mm
- Sash weights up to 286 lbs (130 kg)
- Economical options available

FFI LIFT SLIDE WINDOW SYSTEMS

- Larger openings, minimal sight lines, fewer panels, and more glass
- Cleverly scaled down (slimmer carriages, gears, backset and handles) to allow narrower frames & bigger views
- Allows skinny 1-3/4" panels; 10mm shorter bottom rail
- Same quality, materials, and warranty as FFI SST Signature Lift Slide – at lower cost
- For windows: provides the same view as a door while avoiding door sill weatherability issues
- Achieve a higher performance window with natural ventilation
- Choice of premium 304 or economical 430 grade stainless steel

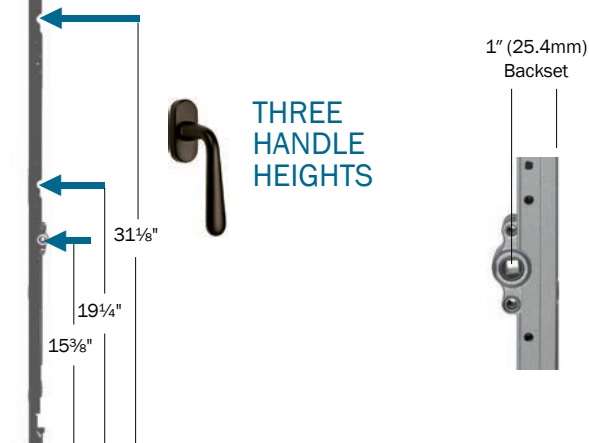


Low profile carriages



FFI ULTRAVUE MODEL 170DL

- Cleverly scaled down for slim profiles on high performance windows
- 7mm spindle hub
- 3 adjustable handle heights; 15 3/8", 19 1/4" & 31 1/8" (from bottom of gear)
- 1" (25.4mm) backset
- For panel thicknesses 1 3/4" (45mm), 2 1/4" (56mm), 2 3/4" (68mm) or thicker
- 4 locking points (more with extensions)
- Weight capacity 330 lbs (150 kg) at 100,000 cycles; 440 lbs (200 kg) at 25,000 cycles



THREE
HANDLE
HEIGHTS

1" (25.4mm)
Backset

FFI SIGNATURE MODEL 170SH

- 10mm spindle hub
- 1 handle height: 15 1/4" (from bottom of gear)
- 1 1/2" (37.5mm) backset
- For panel thicknesses 2 1/4" (56mm), 2 3/4" (68mm) or thicker
- 3 locking points (more with extensions)
- Weight capacity 440 lbs. (200 kg) at 100,000 cycles; 990 lbs (450 kg) with tandem carriage kit at 25,000 cycles



ONE
HANDLE
HEIGHT

1 1/2" (37.5mm)
Backset



MULTIPOINT DOOR LOCKING SYSTEMS

Multipoints are modular and can be configured in many ways, depending on desired height of door, handle height, and if cams are wanted.



UNITOP & UNITOP POSEIDON

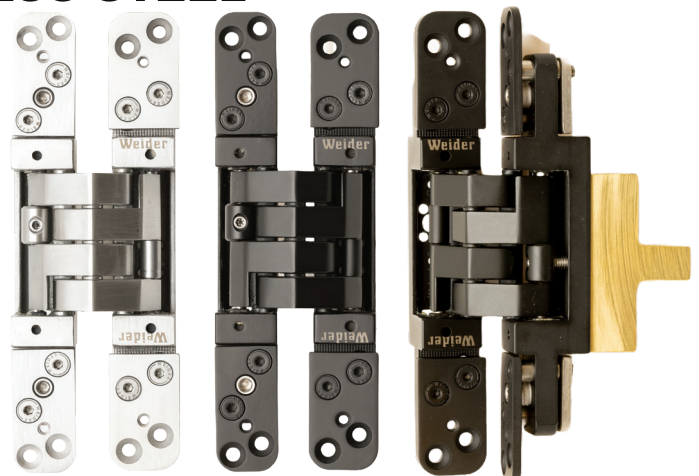
- Lever-driven locks, for patio and balcony doors, activated by lifting door lever to engage the lock points.
- For standard door heights (80", 96") and up to 12 foot tall doors.
- Spindle center distance is 92mm; accepts 8mm spindle.
- Backsets from 25 to 55mm.

SICURTOP & SICURTOP POSEIDON

- Gear-driven shootbolt locks for single doors, entry or commercial, activated by turning a cylinder (not by lifting a lever as with Unitop).
- Spindle center distance is 85mm or 92mm; accepts 8mm spindle.
- Backsets from 35 to 80mm

CONCEALED HINGES IN STAINLESS STEEL

- by Weider Metal, for or flush and rebated doors
- Two versions: For doors up to 120kg (264lbs) and 160kg (352lbs)
- For wood, steel, aluminum & glass doors
- 3D adjustability
- Hold-open & Self-Closing function options can be used on the same door



BI-FOLD DOOR SYSTEMS

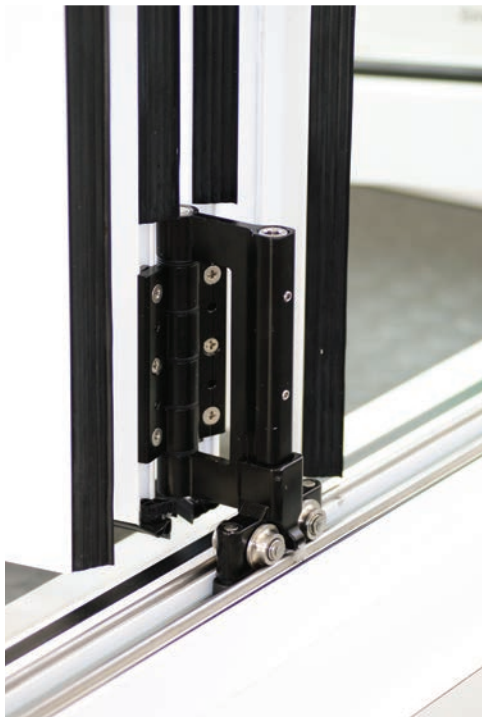
GREENTEQ CLEARSPAN FOR ALUMINUM DOORS

FFI is the exclusive North American distributor for greenteq hardware by VBH (GB) Ltd, known for quality and choice guaranteed, at sensible prices. VBH(GB) offerings include patio door hardware for bi-fold doors, lift-slide and other sliding doors, as well as window hardware and decorative handles.

Compatible Profiles	Visifold 1000, Reynaers CF 68 & others
System Materials	Aluminum, zinc, and steel
Capacity	120kg sash weight
Warranty	10 year warranty

CHARACTERISTICS

- Smooth operation
- Unobtrusive slimline hardware
- Bottom roller system
- Locking options
- Corrosion tested
- Cycle tested for air, wind and water
- 5mm vertical adjustment



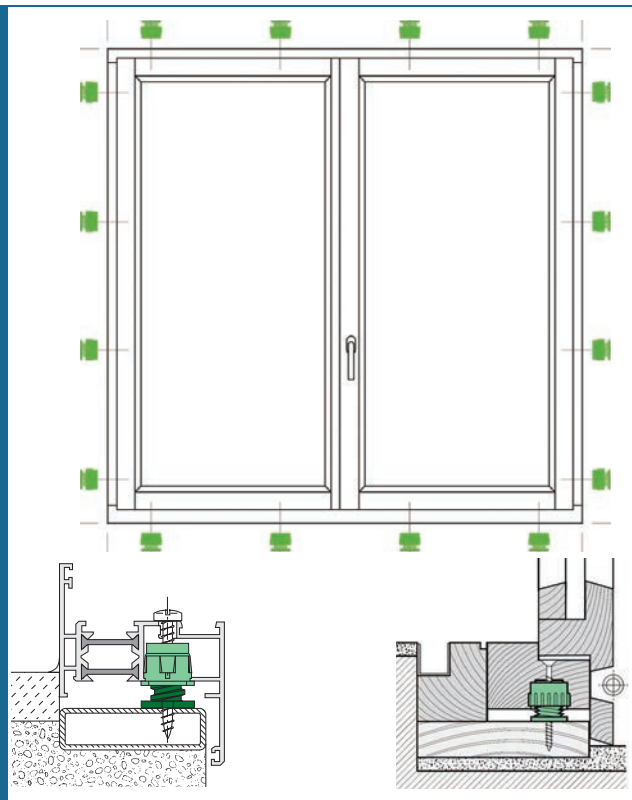
RAPID SPACERS FOR DOORS & WINDOWS

For efficient installation and adjustment of sashes, Rapid Spacers are faster, easier, more accurate and more cost-effective than the shims of yester-year. Can be pre-installed at the factory.

- Spacers serve as engineered, adjustable frame levelers
- Faster and more accurate installation than wood shims
- Reduced labor costs for installation and field service
- Cost effective with volume discounts available



See Catalog G for complete line of spacing options.



BARN DOOR HARDWARE FFI TOP FLIGHT

IN MARINE-GRADE STAINLESS STEEL SST SERIES TOP HUNG SYSTEMS

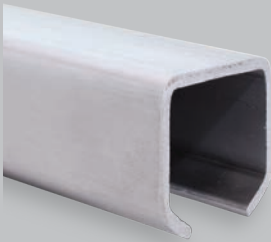
- Marine-Grade Stainless Steel
- Highly durable and quiet Delrin wheels
- Self-cleaning tracks
- Soft close option available
- Suitable for extreme environments



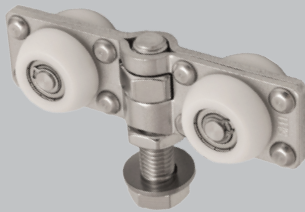
T300 Track



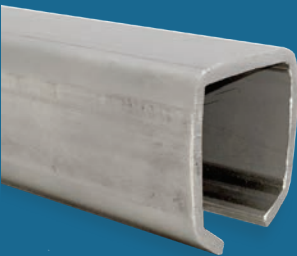
Light Duty Carriages



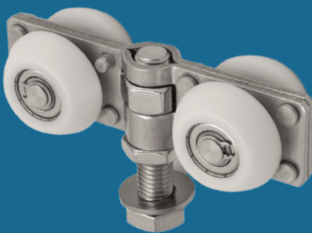
T400 Track



Medium Duty Carriages



T480 Track



Heavy Duty Carriages



APPLICATIONS

Residential, condominiums, hotels & resorts:

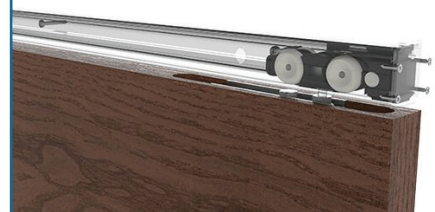
Barn doors, pocket doors, exterior storm shutters, interior room dividers, screens, and more.



Commercial, institutional & industrial:

Corrosive and coastal environments, marinas, yachts, animal enclosures, server windows, factories, and more.

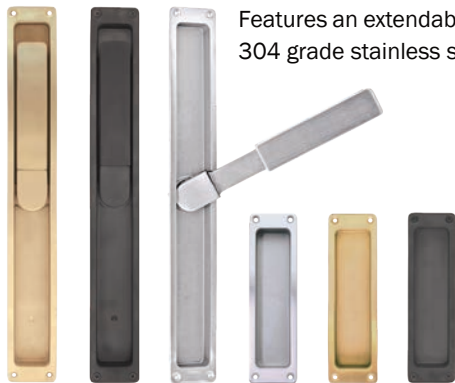
**ALUMINUM TRACK SYSTEMS
ALSO AVAILABLE, SEE CATALOG C**



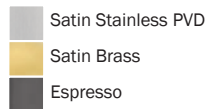
LIFT SLIDE HANDLE SETS

Patented Cascade Handle

Features an extendable handle and solid 304 grade stainless steel construction.



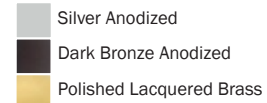
Available Finishes



CASCADE



Available Finishes



WINDOW HANDLE

FFI LS600 SERIES HANDLES

Solid brass handles & plates; stainless steel 10mm spindles.
Options: Removable, cylinders, double handles.



Available Finishes



Pulls available in many styles, finishes and sizes

MODERA

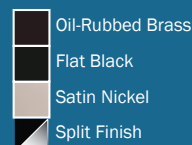
CLASSIC

SIERRA

SWING DOOR HANDLE SETS



Available Finishes



SUMMER

CREST

TOKYO

SUNRISE

Eurostyle Cylinders



Many styles and finishes available. See full catalog for details.

DK WINDOW HANDLE SETS

DK handles are for window locks with 7mm square spindle hubs, used in tilt turn gears and multipoint gears (recommended for positive stop action). Features integral spring-assist mechanism, most models available with locking option.



KENT



YORK



DEVON



DORSET

Available Finishes

- Polished Lacquered
- Antique Brass Unlacquered
- Polished Nickel
- Satin Nickel
- Dark Bronze Unlacquered
- Black Bronze Unlacquered
- Polished Unlacquered



SECURA

Available Finishes

- Silver



GOLIA

Available Finishes

- Oil-Rubbed Brass
- Matte Chrome
- Bright Chrome



OTTAWA

Available Finishes

- Brushed Stainless Steel

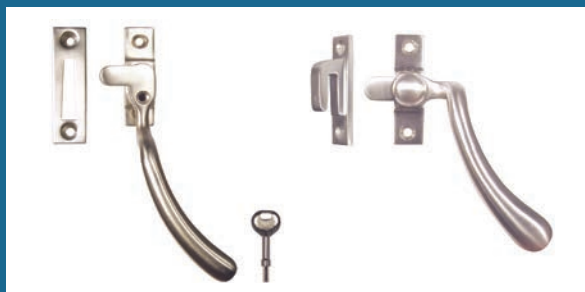


FLUSH HANDLE

Available Finishes

- Light Bronze
- Silver
- White

CAM HANDLES FOR CASEMENT WINDOWS



Available Finishes

- Polished Lacquered
- Antique Brass Unlacquered
- Polished Nickel
- Satin Nickel
- Dark Bronze Unlacquered
- Black Bronze Unlacquered
- Polished Unlacquered

FFI HISTORY HIGHLIGHTS

1987	Seeing a market need through experience as a contractor and in window & door manufacturing & sales, Robert Renner founds a wholesale hardware distribution company and becomes the Western States Distributor for Truth Hardware.
1990's	FFI starts to pioneer European hardware (German and Italian) into North America. Reputation develops for leading-edge market introductions in multipoints, lift slide, bifold hardware, track systems, and more.
2000's	Inspired by customer feedback, FFI rethinks and redesigns European hardware for North American market needs. With new proprietary FFI Design Products, FFI expands its market from North America to worldwide.
2005	FFI partners with 3G Technologies (Korea) for a proprietary stainless steel lift slide system.
2017	The automation division grew steadily in sales and offerings until becoming its own corporation: Automated Fenestration Inc (AFI).
2019	FFI ends distribution of Amesbury Truth hardware, to better focus on our core business of manufacturer clients.
2022	FFI has grown every year, and continues to develop high quality, innovative products.

Questions? We can handle it.

Faster reliable support. Let us show you how.

- We make it easy - CAD drawings, bill of materials, and more.
- Samples for certification testing and other development needs.
- In-stock components ready to ship for your just-in-time needs.
- Need a product you don't see here? FFI can source or produce OEM products.



Functional Fenestration Inc.
Hawthorne, CA
www.fenestration.net
sales@fenestration.net
Toll-Free (800) 677-0228