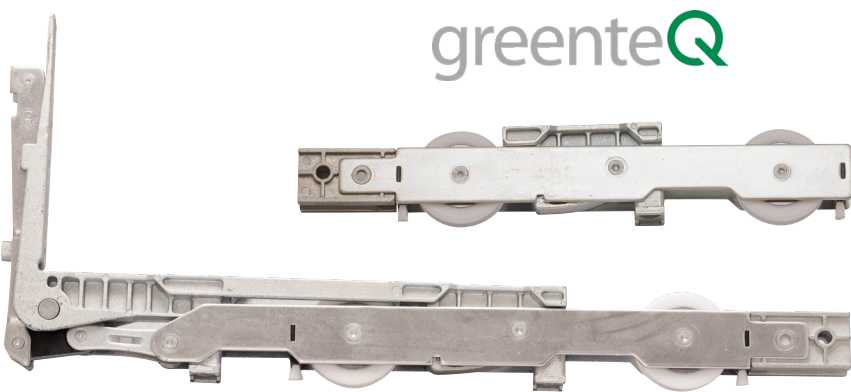


greenteQ Clearlift Lift Slide Hardware

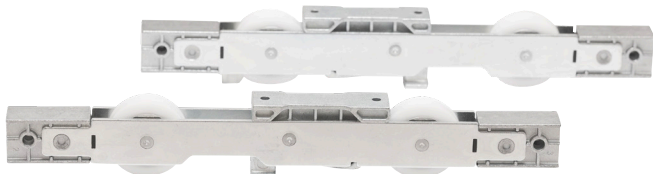
FFI is the exclusive North American distributor for greenteQ hardware by VBH (GB) Ltd, known for quality and choice guaranteed, at sensible prices.



GreenteQ Clearlift copes with the demands of carrying large, heavy sashes, and has competitive features on par with other lift slide brands.

Clearlift Characteristics

Compatible Sashes	All sash types (wood, metal, PVC, etc.)
Capacity	Up to 400kg sash weight
Sash Size	Up to 3.3M wide x 2.7 M tall
Backset	37.5mm
Handle Height	995mm
System Materials	Aluminum, zinc, and steel
Warranty	10 years
Cycle Tested	to 25,000 cycles
Corrosion Protection	to EN1670 grade 4



Tandem carriages for 301-400kg sashes

Clearlift is compatible with most any lift slide profile (Deceuninck, Veka, Kommerling, Rehau, etc); for Reynaers aluminum profiles: GreenteQ install kit, screw pack, and other accessories available for XO and XX layouts.

Visit www.vbhgb.com and www.fenestration.net for more details, and ask FFI for assistance.



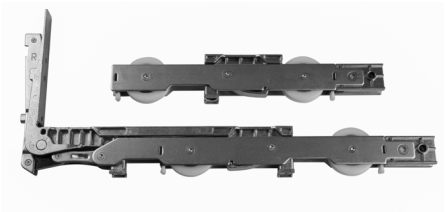
Aspire handles & pulls, see page 4.



Clearlift Components - An Overview

Four core elements: carriages, gear, link rod, strikes

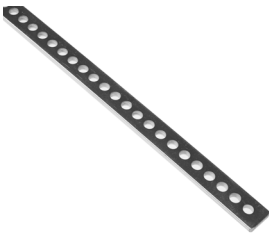
Item	Description
4QLS0001	Carriage (Bogie) Set (with track-cleaning brushes)
4QLS0002	Carriage Tandem Set for up to 400kg doors (use with 4QLS0001 set)
4QLS0010A	Drive Gear SRH 1750-2290mm, silver, Class II anodized
4QLS0011A	Drive Gear SRH 2291-2700mm, silver, Class II anodized
4QLS0020	Link Rail/rod (1500mm long, to connect carriages)
4QLS0027	Link rail pin (use 2 per link rail to connect to carriages)
4QSL0030	Link rail guide bracket (for any sash type)
4QSL0061	Strike
4QLS0062	Ventilation Strike



4QLS0001
Bogie Set



4QLS0010A-11A
Drive Gear



4QLS0020
Link Rail



4QLS0061
Striker



4QLS0062
N/V Striker



4QLS0060
Positioning Jig

Clearlift - Accessories for Wood and other panel types

These items and more available to suit most any application; also see A-11 & A-12 and ask FFI for assistance.

Item #	Description
4QLS0060	Positioning jig for strike
4QLS0070	Strike packer 1mm shim for lock bolts
4QLS0071	Strike packer 2mm shim for lock bolts
LLB4000000	Lock bolt 304 SST - For wood sashes
LSBOLT0030	Carriage screw, Silver
LSBOLT2002-6	Carriage screws (6), Silver - for wood sashes
LSBOLT2003-15	Gear screws (15), Silver - for wood sashes



4QLS0027



4QLS0030

Clearlift gearface extends to bottom to conceal carriage



Clearlift Lift Slide hardware to Suite Reynaers, and many other panel types.

Below is a Sample hardware order for an aluminum door panel using Reynaers profile.

Example order for "Scheme A" Door

Item	Description	Qty Scheme A
4QLS0001	Bogie Set	1
4QLS0020	Link Rail	1
4QLS0030	Link Rail Guide Bracket	1
4QLS0010	Drive Gear 1	1
4QLS0011	Drive Gear 2	1
4QLS0061	Striker Plate	3
4QLS0062	Night Vent Striker Plate	1
4QLS0070	Striker Packer	4
4QLS0100	Fixing Set	1
4QLS0040	Master Bogie Distance Block	1
4QLS0050	Drive Gear Distance Block Set	1
4QLS0110	Glass Support Packer	6
See Page 4	Handle Set	1

For aluminum sashes (suited to Reynaers profiles)

Item	Description
4QLS0100	Screw pack with rail connecting pins
4QLS0050	Drive Gear Distance Block Set (for Reynaers profiles)
4QLS0040	Master Bogie Distance Block (for Reynaers profiles)
4QLS0030	Link Rail Guide Bracket
4QLS0110	Glass Support Packer (for Reynaers profiles)



4QLS0050
Drive Gear Distance Block Set



4QLS0040
Master Bogie Distance Block



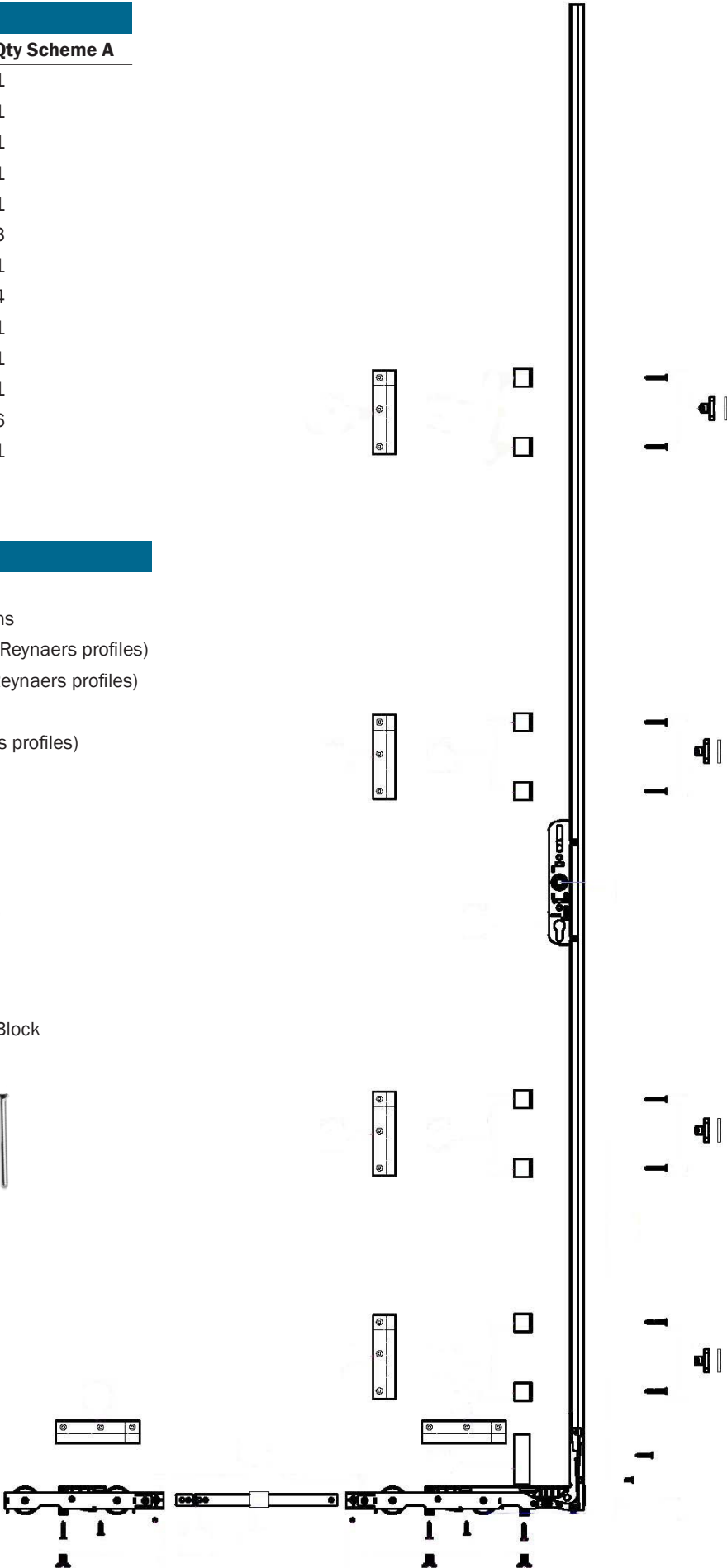
4QLS0030
Link Rail Guide Bracket



4QLS0100
Screw Pack



4QLS0110
Glass Support Packer



Aspire Handles and Pulls for Lift Slide Doors

FFI is the exclusive North American distributor for greenteQ hardware by VBH (GB) Ltd, known for quality and choice guaranteed, at sensible prices.



- Aspire handles & pulls: 10 year warranty
- Robust spring mechanism
- Escutcheon plates 33mm wide x 151.5mm tall x 15.3mm thick
- Handles in 304 stainless steel corrosion-tested to 500 hours, available in these plated finishes: PVD gold, satin chrome, polished SST, brushed SST
- Handles in zinc material corrosion-tested to 240 hours, available in these painted finishes: black, white, grey, silver

Configurations: items sold separately, see FFI catalog for ordering details

Handle with plate only - add 50mm screws, 60mm spindle

Locking Handle - Plate has cutout for profile cylinder (sold separately)

Handle with external pull - Order handle + pull + 70mm screws + 105mm spindle

Double handle sets - order 2 locking handles + 70mm screws + 105mm spindle

Rear mount pulls - to pair with an interior handle, and/or use on screens

Accessories - FFI has screws, spindles, and cylinders available, ask for assistance

Finish	Aspire Handle with Plate		Aspire Handle with plate & Profile Cylinder Hole		Aspire Pulls
	Low Profile	High Profile	Low Profile	High Profile	VBH Code
White	2QHB4621	2QHB4721	2QHB4601	2QHB4701	2QHB4641
Anthracite Grey	2QHB4622	2QHB4722	2QHB4602	2QHB4702	2QHB4642
Silver (RAL 7040)	2QHB4623	2QHB4723	2QHB4603	2QHB4703	2QHB4643
Black	2QHB4624	2QHB4724	2QHB4604	2QHB4704	2QHB4644
PVD Gold	2QHB4625	2QHB4725	2QHB4605	2QHB4705	2QHB4645
Satin Chrome	2QHB4627	2QHB4727	2QHB4607	2QHB4707	2QHB4647
Polished S/Steel	2QHB4628	2QHB4728	2QHB4608	2QHB4708	2QHB4648
Brushed S/Steel	2QHB4629	2QHB4729	2QHB4609	2QHB4709	2QHB4649
Brushed Graphite	-	2QHB4730	-	2QHB4710	2QHB4650

For details contact FFI, and see FFI catalog at www.Fenestration.net



Functional Fenestration Inc.
Hawthorne, CA • Phone (800) 677-0228
www.fenestration.net • sales@fenestration.net