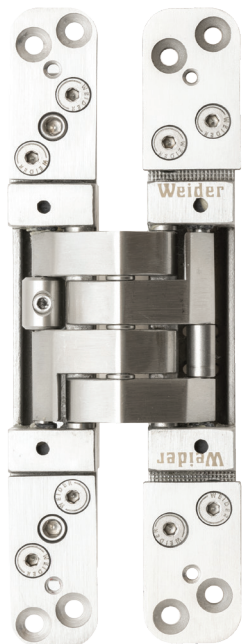


# Premium Adjustable Concealed Hinges For Wood and Metal Doors



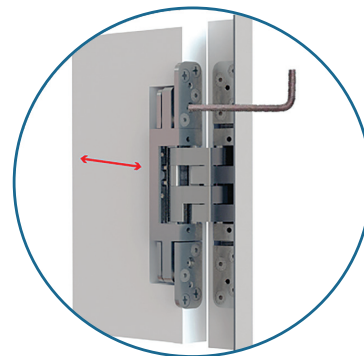
*In high grade stainless steel,  
because your project deserves the best.*



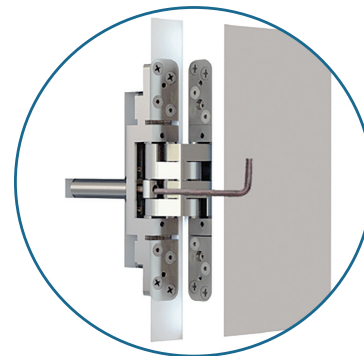
3DX-160-SST



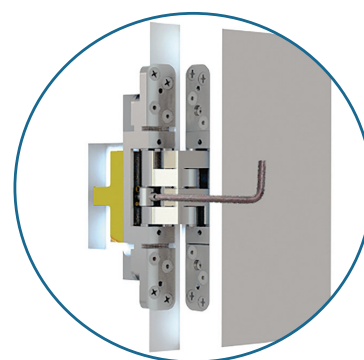
3DX-160-BLK



Adjustable with Allen key



Self-closing actuator with speed adjustment



Hold-open with angle adjustment

## Characteristics - Concealed Hinges

- Crafted in 304 grade Stainless Steel
- For flush and rabbeted flush doors
- Two versions: For doors up to 120kg (264 lbs) and 160kg (352 lbs)
- For wood, steel, and aluminum doors and frames
- 3D adjustments for height, compression (to frame), and side (to plumb the door)
- Soft-close hinge with hydraulic function and constant rate of speed in closing (adjustable closing range of 3-5 seconds).
- Hold-Open & Self-Closing functions can be used on the same door!

## Advantages

- Premium quality, precision & durability
- Sound-insulating hinges
- Investment cast manufacturing with sustainable methods
- Anti-twist and anti-pull construction prevents sagging and twisting during adjustments
- Self-closing hinge option eliminates need for surface-mount door closer (less hardware and cleaner look)
- How can higher cost stainless steel hinges save you money? Higher quality hinges prevent repairs and replacement due to sagging, bending, warping and cracking under load; with stainless hinges less hinges per door may be possible
- Stocked in USA
- Warranty against mechanical defects per application: 2 years commercial, 5 years residential

# Premium Adjustable Concealed Hinges

## Free Swing Hinges

Item	Weight Capacity	Finish
<b>3DX-120-SST</b>	120kg	Satin US32D
<b>3DX-120-BLK</b>	120kg	Matte Black US19
<b>3DX-160-SST</b>	160kg	Satin US32D
<b>3DX-160-BLK</b>	160kg	Matte Black US19

## Hold-Open Hinges

Item	Weight Capacity	Finish
<b>3DX-120-HO-SST</b>	120kg	Satin US32D
<b>3DX-120-HO-BLK</b>	120kg	Matte Black US19
<b>3DX-160-HO-SST</b>	160kg	Satin US32D
<b>3DX-160-HO-BLK</b>	160kg	Matte Black US19

## Self-Closing Hinges

Item	Weight Capacity	Finish																							
<b>3DX-120-SC60-SST</b>	60kg	Satin US32D																							
<b>3DX-120-SC60-BLK</b>	60kg	Matte Black US19																							
<b>3DX-120-SC80-SST</b>	80kg	Satin US32D																							
<b>3DX-120-SC80-BLK</b>	80kg </tr <tr> <td><b>3DX-120-SC120-SST</b></td> <td>120kg</td> <td>Satin US32D</td> </tr> <tr> <td><b>3DX-120-SC120-BLK</b></td> <td>120kg</td> <td>Matte Black US19</td> </tr> <tr> <td><b>3DX-160-SC80-SST</b></td> <td>80kg</td> <td>Satin US32D</td> </tr> <tr> <td><b>3DX-160-SC80-BLK</b></td> <td>80kg</td> <td>Matte Black US19</td> </tr> <tr> <td><b>3DX-160-SC120-SST</b></td> <td>120kg</td> <td>Satin US32D</td> </tr> <tr> <td><b>3DX-160-SC120-BLK</b></td> <td>120kg</td> <td>Matte Black US19</td> </tr> <tr> <td><b>3DX-160-SC160-SST</b></td> <td>160kg</td> <td>Satin US32D</td> </tr> <tr> <td><b>3DX-160-SC160-BLK</b></td> <td>160kg</td> <td>Matte Black US19</td> </tr>	<b>3DX-120-SC120-SST</b>	120kg	Satin US32D	<b>3DX-120-SC120-BLK</b>	120kg	Matte Black US19	<b>3DX-160-SC80-SST</b>	80kg	Satin US32D	<b>3DX-160-SC80-BLK</b>	80kg	Matte Black US19	<b>3DX-160-SC120-SST</b>	120kg	Satin US32D	<b>3DX-160-SC120-BLK</b>	120kg	Matte Black US19	<b>3DX-160-SC160-SST</b>	160kg	Satin US32D	<b>3DX-160-SC160-BLK</b>	160kg	Matte Black US19
<b>3DX-120-SC120-SST</b>	120kg	Satin US32D																							
<b>3DX-120-SC120-BLK</b>	120kg	Matte Black US19																							
<b>3DX-160-SC80-SST</b>	80kg	Satin US32D																							
<b>3DX-160-SC80-BLK</b>	80kg	Matte Black US19																							
<b>3DX-160-SC120-SST</b>	120kg	Satin US32D																							
<b>3DX-160-SC120-BLK</b>	120kg	Matte Black US19																							
<b>3DX-160-SC160-SST</b>	160kg	Satin US32D																							
<b>3DX-160-SC160-BLK</b>	160kg	Matte Black US19																							

## Self-Closing Weight Capacities

<b>SC60</b>	Suitable for door weight 22lbs to 132lbs
<b>SC80</b>	Suitable for door weight 133lbs to 176lbs
<b>SC120</b>	Suitable for door weight 177lbs to 264lbs
<b>SC160</b>	Suitable for door weight 265lbs to 352lbs

- UL in process
- Hinges for glass doors available
- Many finish and coating options are available, including titanium coating with hardness 9H (greater hardness compared to PVD). Ask for details.
- Finish samples & showroom displays available - ask for details



For details contact FFI, and see FFI catalog at [www.Fenestration.net](http://www.Fenestration.net)



Functional Fenestration Inc.  
 Hawthorne, CA • Phone (800) 677-0228  
[www.fenestration.net](http://www.fenestration.net) • [sales@fenestration.net](mailto:sales@fenestration.net)