

Deco Series Cylinders

90°/360° Euro Style Cylinders

Deco Series Cylinders

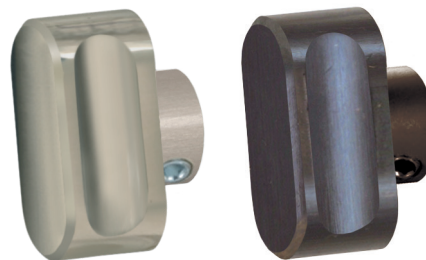
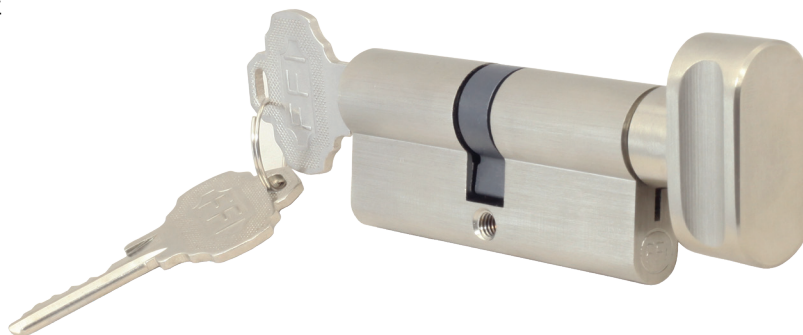
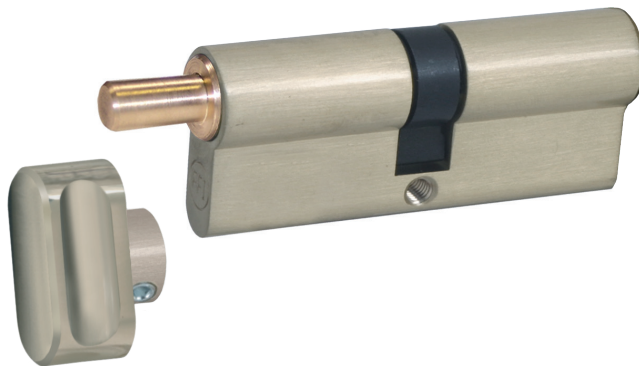
- Cylinders with popular 90° thumbturn ergonomic motion
- The 90° thumbturn position gives users a visual indicator that the gear is locked
- Cylinder can be converted to 360° with a simple adjustment

Applications

- For multipoint door locks accepting Euro style cylinders
- For lift slide locks accepting Euro style cylinders
- 76mm full-cylinders and 48mm half-cylinders, other styles, sizes and types of cylinders available on request (with minimum quantity)

Features

- Material: Solid Brass
- Finishes: Oil-Rubbed Brass and Satin Nickel finishes
- Warranty against manufacturing defects: 1 year
- Choice of 2 styles of thumbturn knob
- Keyed cylinders have Schlage C-Keyway



Modern ergonomic thumbturn (Sold Separately) provides comfortable operation.

Visit us at www.fenestration.net for more information

Deco Series Cylinders with shaft

Item #	Material	Length	Finish
PC900.76.613	Brass	76mm Full cylinder	Oil-Rubbed Brass
PC900.76.619	Brass	76mm Full cylinder	Satin Nickel
PC901.48.613	Brass	48mm Half cylinder	Oil-Rubbed Brass
PC901.48.619	Brass	48mm Half cylinder	Satin Nickel



Deco Series cylinders require thumbturn knob (sold separately):

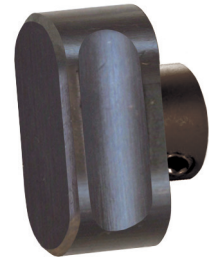
Deco Series Thumbturn Knobs

Sold Separately

Item #	Material	Finish
TT905.01.619	Brass	Satin Nickel
TT905.01.613	Brass	Oil-Rubbed Brass



TT905.01.619



TT905.01.613

AGB Thumbturn Knobs

Sold Separately, compatible with Deco Series Cylinders

Item #	Material	Finish
C00645.00.16	Brass	Matte Nickel
C00645.00.ORB	Brass	Oil-Rubbed Brass



C00645.00.16



C00645.00.ORB

Other styles, sizes and types of cylinders and knobs available on request (with minimum quantity).