



Features

- Solid brass lift slide door handles in 5 finishes
- New Modera handles with modern squared escutcheon plates and pulls
- Stainless Steel 304 spindle

Enhancements to FFI Lift Slide Handles

- Improved handle-to-chassis fit
- Positive feedback in open and closed positions (feel the click)
- Fool-proof handle alignments with handle insertion guard
- Removable handle plates streamlined for slimmer pocketing profile
- Same milling size as Classic and Sierra
- New improved Classic & Sierra handles & pulls
- Double handle sets, including new removable double handle option - Now Available!

Applications

- Compatible with lift slide door gears with 10mm spindle hub
- Gears with 27.5 or 37.5mm backsets
- Spindle for up to 106mm door thickness (gear centered in stile)

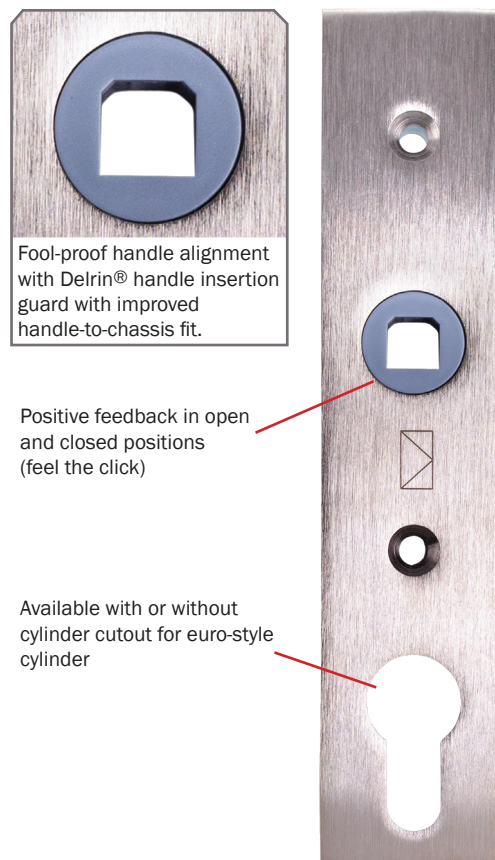
FFI Warranty

- 5 Years against manufacturing defects
- Limited lifetime warranty for PVD Satin Nickel (SN) and Polished Brass (POL) finishes; effectively 10 years against corrosion failure; PVD finish is recommended for coastal applications.
- 1 Year warranty against corrosion failure for Oil-Rubbed Brass (ORB), Black (BLK) and Dark Bronze (PDB) powder-coated finishes.

New

Modera

Modern squared escutcheon plates & pulls



LS600 Series Modera Handles

Modera Options

- Removable or fixed/standard handle sets
- Available in Single and Double handle sets
- Modern Squared Escutcheon plates with or without euro-style cylinder cutout
- Modern Squared pulls

Modera Handle & Pull Sets



Oil-Rubbed Brass

Flat Black

Dark Bronze

Bright Brass PVD

Satin Nickel PVD

Modera Removable Handle Sets



Handles and plates also available separately



LS600 Series Pulls

Modera Series Pulls



Modera Series Matching Screen Pulls



New improved Classic & Sierra handles & pulls - Now Available!



Functional Fenestration Inc.
Hawthorne, CA • Phone (800) 677-0228 • Fax (323) 756-9971
www.fenestration.net • sales@fenestration.net