

LS620 Sierra Handles

For lift slide doors



Features

- Solid brass lift slide door handles in 5 finishes
- Stainless Steel 304 spindle

Enhancements to FFI Lift Slide Handles

- Improved handle-to-chassis fit
- Positive feedback in open and closed positions (feel the click)
- Fool-proof handle alignments with handle insertion guard
- Removable handle plates streamlined for slimmer pocketing profile
- Same milling size as Modera and Classic
- Double handle sets, including new removable double handle option - Now Available!

Applications

- Compatible with lift slide door gears with 10mm spindle hub
- Gears with 27.5 or 37.5mm backsets
- Spindle for up to 106mm door thickness (gear centered in stile)

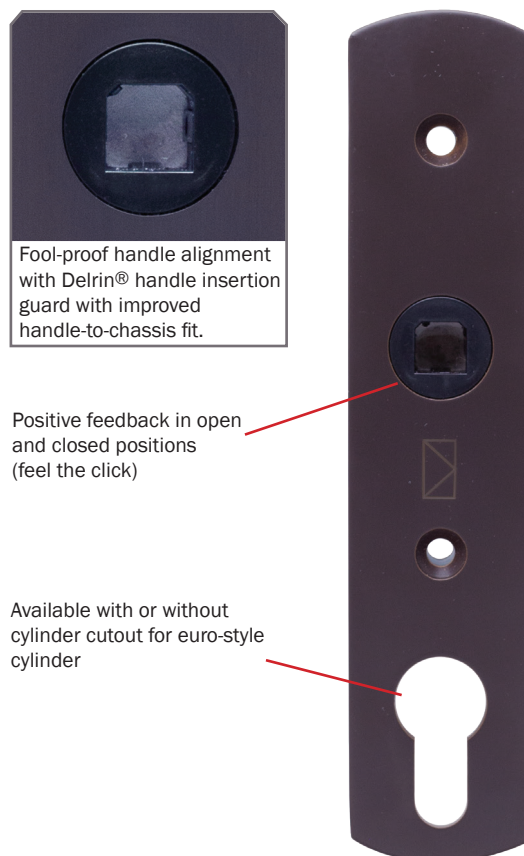
FFI Warranty

- 5 Years against manufacturing defects
- Limited lifetime warranty for PVD Satin Nickel (SN) and Polished Brass (POL) finishes; effectively 10 years against corrosion failure; PVD finish is recommended for coastal applications.
- 1 Year warranty against corrosion failure for Oil-Rubbed Brass (ORB), Black (BLK) and Dark Bronze (PDB) powder-coated finishes.

New

Sierra

Enhanced style and function



LS620 Series Sierra Handles

Sierra Options

- Removable or fixed/standard handle sets
- Available in Single and Double handle sets
- With or without euro-style cylinder cutout

Sierra Handle & Pull Sets



Oil-Rubbed Brass

Flat Black

Dark Bronze

Bright Brass PVD

Satin Nickel PVD

Sierra Removable Handle Sets



Handles and plates also available separately



LS620 Series Pulls

Sierra Series Pulls



Oil-Rubbed Brass



Flat Black



Dark Bronze



Bright Brass PVD



Satin Nickel PVD

Sierra Series Matching Screen Pulls



Oil-Rubbed Brass



Flat Black



Dark Bronze



Bright Brass PVD



Satin Nickel PVD



FUNCTIONAL
FENESTRATION INC.

Functional Fenestration Inc.
Hawthorne, CA • Phone (800) 677-0228 • Fax (323) 756-9971
www.fenestration.net • sales@fenestration.net